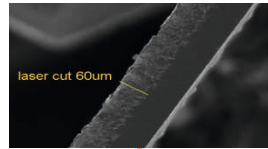


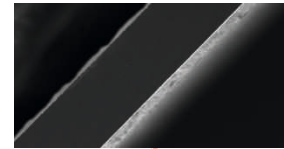
### Non Destructive Cell Cutting for Zero Micro Cracks

**X** Manual Laser Cutting



More than 1500 °C  
High Temperature

**Non-Destructive Cutting (NDC)**  
30% More Mechanical Strength **✓**



Less than 130 °C  
Low Temperature

### Generate Power from Both Sides

Direct Sunlight

Upto 30%  
Extra power

Reflected Sunlight

FRONT SIDE ELECTRICAL DATA (STC)					
Model No.	G2X-Bifacial-1695-UHAD	G2X-Bifacial-1702-UHAD	G2X-Bifacial-1708-UHAD	G2X-Bifacial-1715-HAD	
Peak Power Output - Pmax(Wp)	535	540	545	550	
Power Output Tolerance (Wp)	0 ~ +5	0 ~ +5	0 ~ +5	0 ~ +5	
Open Circuit Current - Voc(V)	49.14	49.23	49.34	49.48	
Maximum Power Voltage - Vmpp(V)	41.70	41.80	41.94	42.06	
Short circuit current - Isc(A)	13.71	13.79	13.86	13.92	
Maximum Power Current - Imp(A)	12.83	12.92	13.00	13.08	
Module Efficiency (%)	20.69	20.89	21.08	21.27	
Fill Factor (%)	79.41	79.54	79.70	79.85	

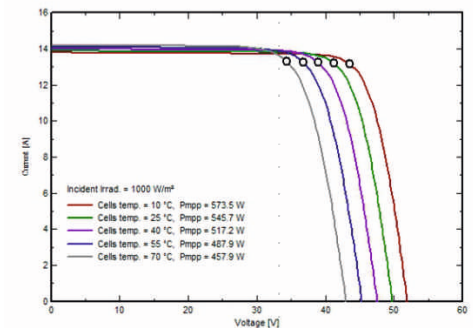
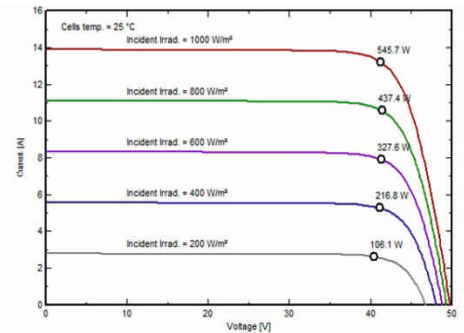
BACK SIDE POWER GAIN					
Gain	Peak Power (Wp)	54	54	55	55
With 10% Gain	Peak Power (Wp)	80	81	82	83
With 15% Gain	Peak Power (Wp)	107	108	109	110
With 25% Gain	Peak Power (Wp)	134	135	136	138
With 30% Gain	Peak Power (Wp)	161	162	164	165

TOTAL POWER (FRONT+BACK)					
Gain	Peak Power (Wp)	589	594	600	605
With 10% Gain	Efficiency $\eta_m$ (%)	22.76	22.97	23.19	23.40
With 15% Gain	Peak Power (Wp)	615	621	627	633
	Efficiency $\eta_m$ (%)	23.80	24.02	24.24	24.46
With 20% Gain	Peak Power (Wp)	642	648	654	660
	Efficiency $\eta_m$ (%)	24.83	25.06	25.29	25.53
With 25% Gain	Peak Power (Wp)	669	675	681	688
	Efficiency $\eta_m$ (%)	25.87	26.11	26.35	26.59
With 30% Gain	Peak Power (Wp)	696	702	709	715
	Efficiency $\eta_m$ (%)	26.90	27.15	27.40	27.65

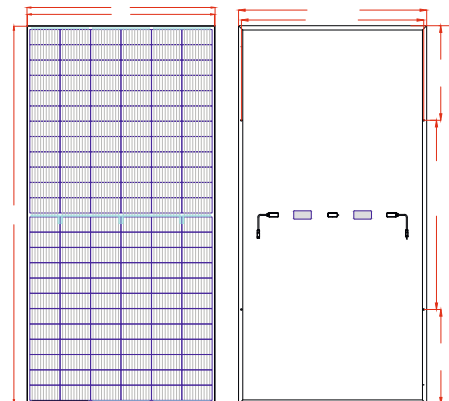
MECHANICAL DATA	
Solar Cells Per Module (units)	144
Cells Configuration (Matrix)	24 x 6
Monocrystalline Solar Half-cell Size(mm)	182 x 91
Length(L) x Width(W) x Thickness(T) in mm	2280 x 1134 x 35
Area of module (sq-m)	2.58552
Weight of module(kg)	27.1

Junction Box	IP 68 rated Split Junction Box with Individual Bypass Diode
Connector	(MC4) Amphenol
Front Cover(Glass)	Low Iron High Transmission AR Coated Tempered Glass
Encapsulant	EVA
Back cover(Backsheet)	Transparent Backsheet (composite film)
Frame	Anodized Aluminum Frame

Temperature Ratings	
NOCT	45°C ± 2°C
Maximum System Voltage	1500V DC
Maximum Series Fuse Rating	25A
Temperature Coefficient of Pmax	-0.39% /°C
Temperature Coefficient of Voc	-0.30% /°C
Temperature coefficient of Isc	0.06% /°C
Temperature Range	-40°C to +85°C



## Engineering Drawings



Specifications provided in the datasheet are subject to change without Prior notice.

● +91 9289350481

● info@gautamsolar.com

www.gautamsolar.com