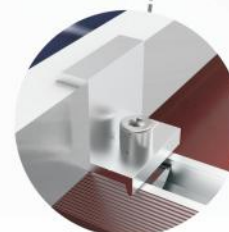
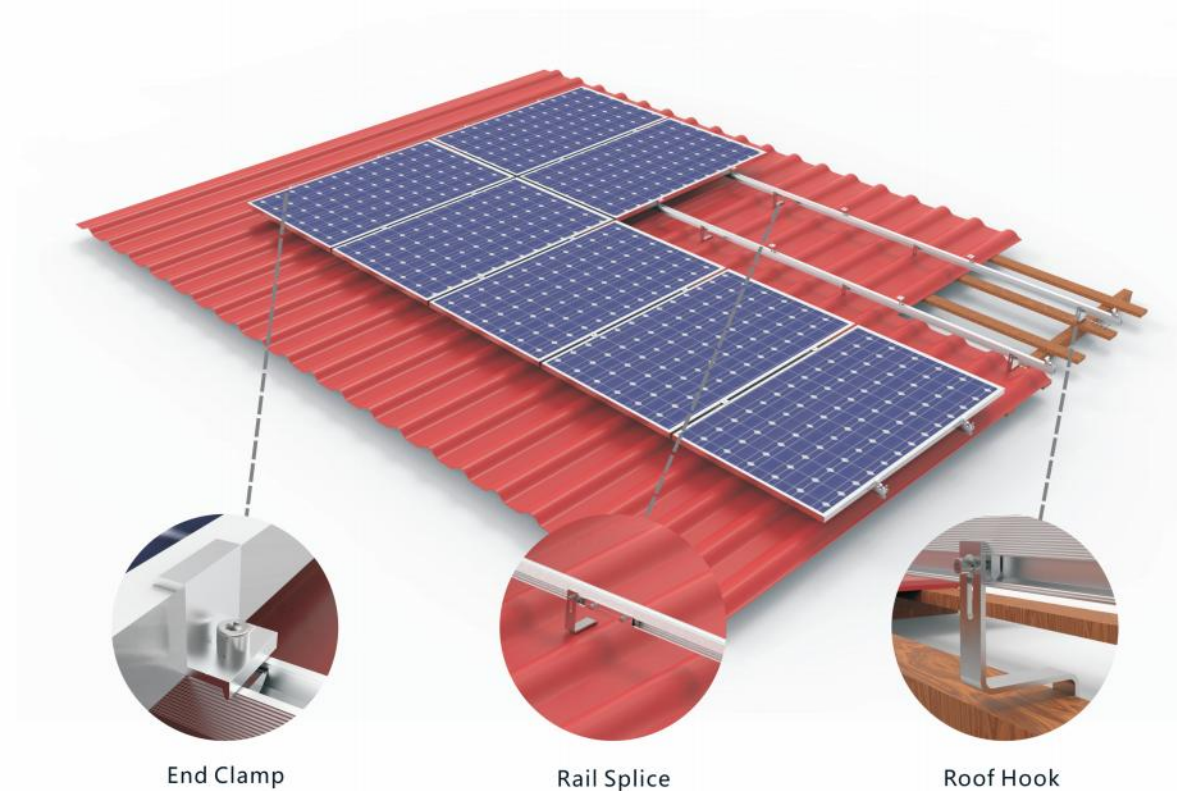
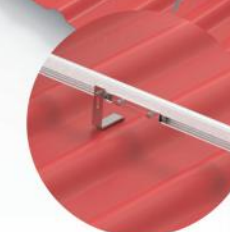




Tile Roof Mounting System



End Clamp



Rail Splice



Roof Hook

Features

Tile roof mounting system offers perfection solution for installation on tile roofing, is designed for easy installing, high load capacity, and ensuring durability under extreme weather. It helps the system operate safely and effectively.

Components



A

Roof Hook Kit
Roof Hook
SUS304/Q355 optional
Rail Ingot Kit
AL6005-T5&SUS304
Wood Screw
Q235/SUS304/
SUS410 optional



Installation
Roof Hook Kit
with Rail 30-40



B

Middle Clamp Kit
30/35/40mm
AL6005-T5&SUS304
Black optional



D

Rail
26-52/26-46/30-40 optional
AL6005-T5
Length can be
customized



C

End Clamp Kit
30/35/40mm
AL6005-T5&SUS304
Black optional



E

Rail Splice Kit
AL6005-T5&SUS304



Technical Parameter	
Application	Pitched or Tile Roof
Wind Load	≤60 m/s
Snow Load	≤1.6 KN/m ²
Module Orientation	Landscape/Portrait
Standards	ASCE_7-10, JIS C8955: 2017, EN1090, International Building Code IBC 2009
Material	SUS304&AL6005-T5(Anodized)

Tile Roof Components



Item No. Description
Model 1
SUS304/Q355
Rail Ingot Kit/
Wood Screw
optional



Item No. Description
Model 2
SUS304/Q355
Rail Ingot Kit/
Wood Screw
optional



Item No. Description
Model 3
SUS304/Q355
Rail Ingot Kit/
Wood Screw
optional



Item No. Description
Model 4
SUS304/Q355
Rail Ingot Kit/
Wood Screw
optional



Item No. Description
Model 5
SUS304/Q355
Rail Ingot Kit/
Wood Screw
optional



Item No. Description
Model 6
SUS304/Q355
Rail Ingot Kit/
Wood Screw
optional



Item No. Description
Model 7
SUS304/Q355
Rail Ingot Kit/
Wood Screw
optional



Item No. Description
Model 8
SUS304/Q355
Rail Ingot Kit/
Wood Screw
optional



Item No. Description
Model 9
SUS304/Q355
Rail Ingot Kit/
Wood Screw
optional



Item No. Description
Model 10
SUS304/Q355
Rail Ingot Kit/
Wood Screw
optional

Roof Components



Item No. Description
AST-081
Rail 26-52



Item No. Description
AST-080
Rail 26-46



Item No. Description
AST-028
Rail 30-40



Item No. Description
AST-082
Rail Splice Kit,
connector for
AST-080/081



Item No. Description
No. AST-029
Rail Splice Kit,
connector for
AST-028



Item No. Description
AST-023
Middle Clamp
Kit



Item No. Description
AST-020/021/046
End Clamp Kit



Item No. Description
AST-023-Black
Middle Clamp
Kit Black



Item No. Description
AST-020/021/046-Black
End Clamp Kit
Black