

# Powerwall 5kwh 10kwh



**HHS ENERGY** SINCE 2004

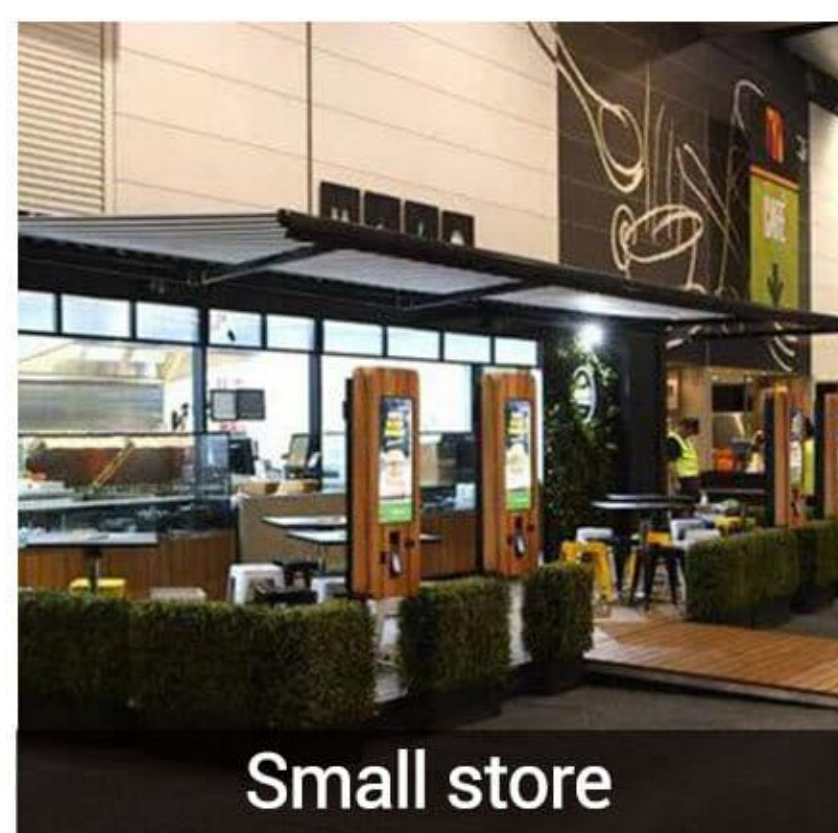
## Product advantages:

- Support a variety of communications, can communicate with a variety of inverters;
- Products cover 5-10KWH capacity segment;
- The product supports parallel connection and expansion;
- Simple appearance design, easy installation;

## Application scenarios:



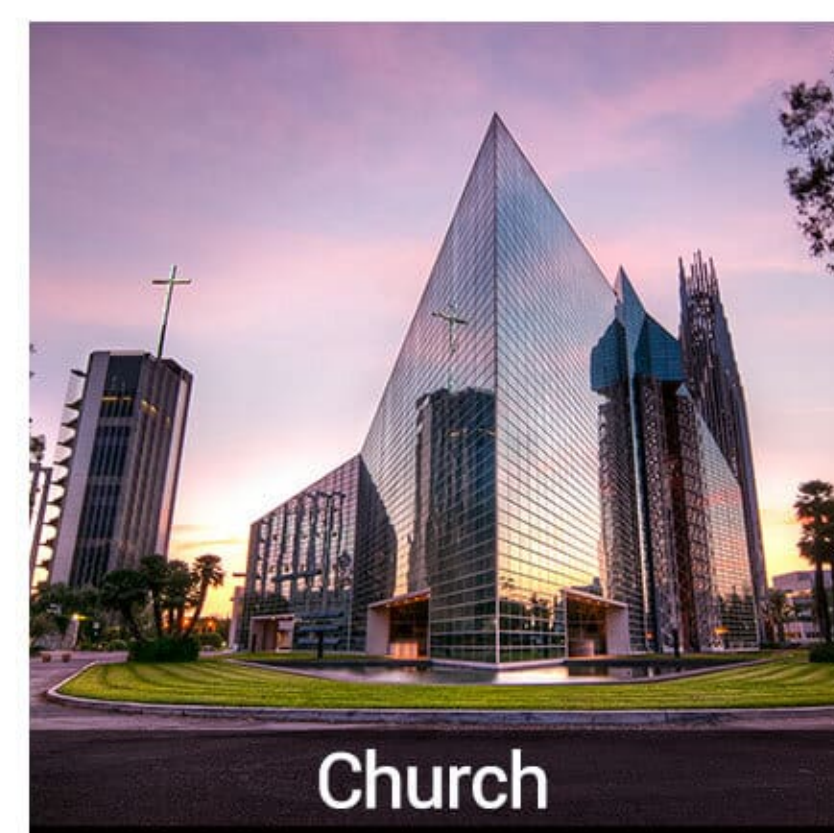
Family



Small store



Office



Church



[www.hhs-energy.com](http://www.hhs-energy.com)



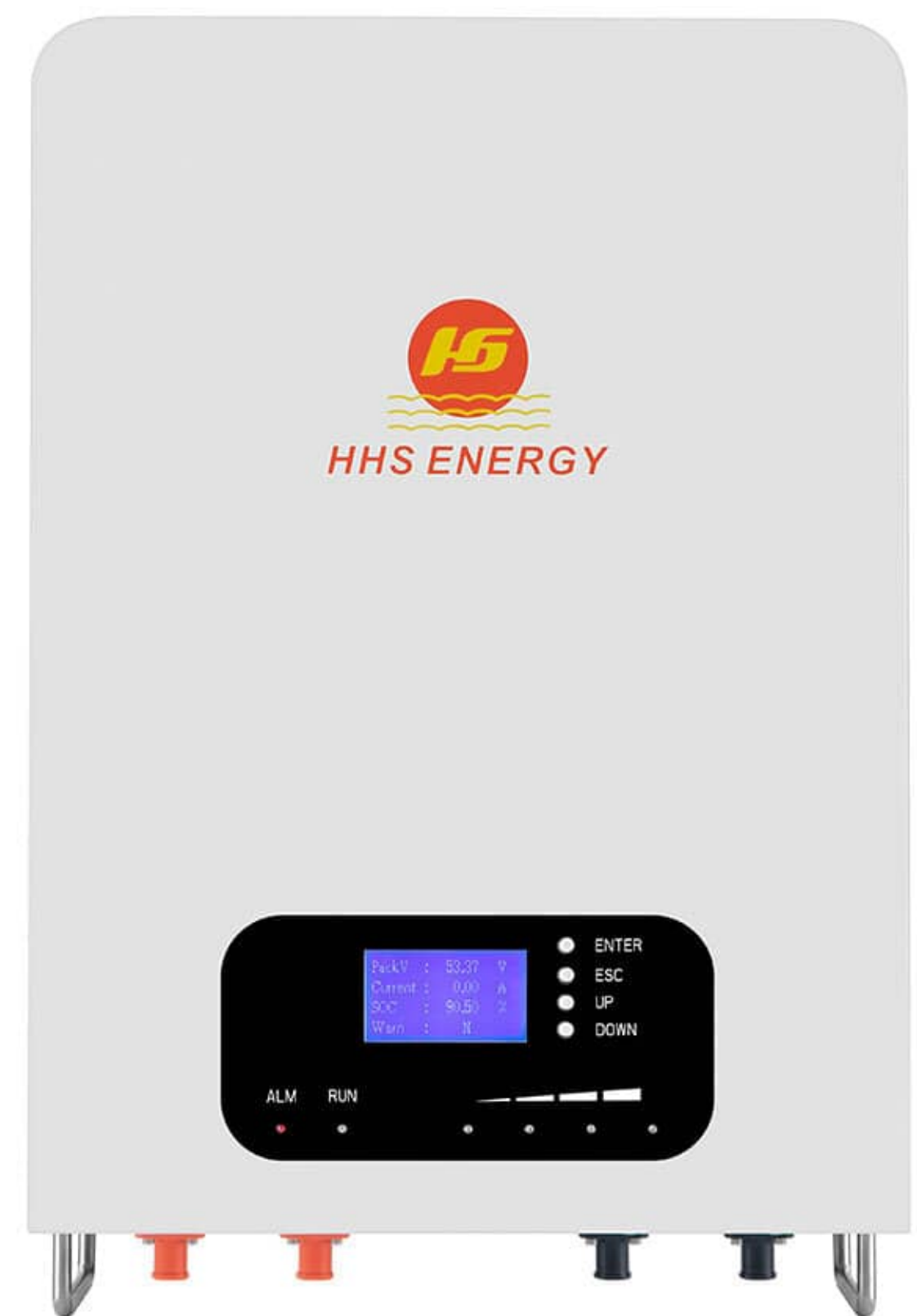
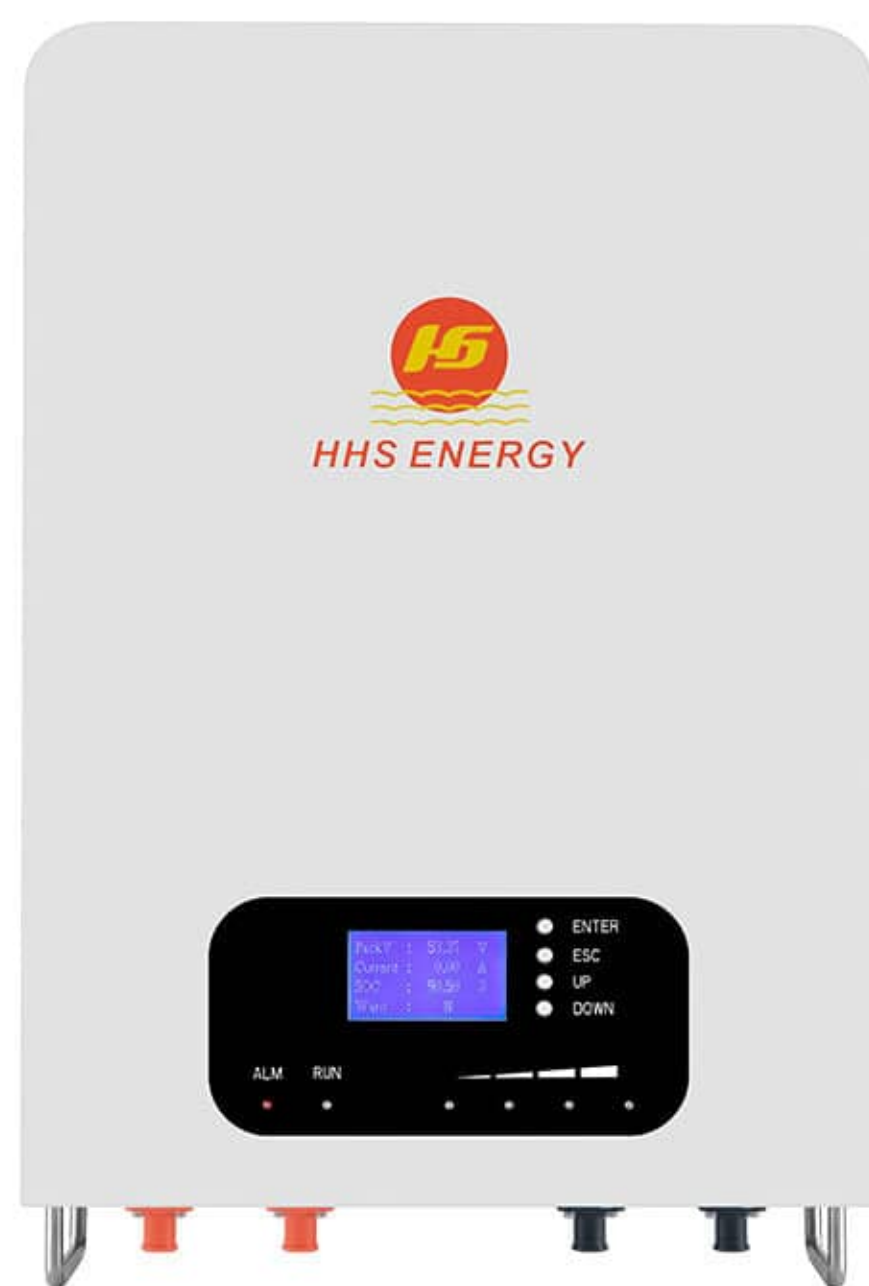
+86-755-28237685



[director@sz-battery.com](mailto:director@sz-battery.com)



## Product Specifications



Model	HHS-PW48100	HHS-PW48200
Nominal Voltage	51.2V(16series)	51.2V(16series)
Capacity	100Ah	200Ah
Energy	5KWh	10KWh
Internal Resistance	≤40mΩ	
Cycle Life	≥6000cycles@80%DOD,25°C, 0.5C	
Design Life	≥10 years	
Charge Cut-off Voltage	58.4V	58.4V
Max. Continuous Work Current	100A	200A
Discharge Cut-off Voltage	40V	40V
Charge Temperature	0°C~60°C	
Discharge Temperature	-20°C~60°C	
Storage Temperature	-40°C~55°C @ 60%±25% relative humidity	
Dimensions	500*360*193 mm	570*468*245 mm
Weight	45.5Kg	89.5Kg
Protocol (optional)	RS232-PC,RS485(B)-PC RS485(A)-Inverter,Canbus-Inverter	
Certification	CE,UN38.3,MSDS,UL1973(Cell),IEC62619(Cell)	