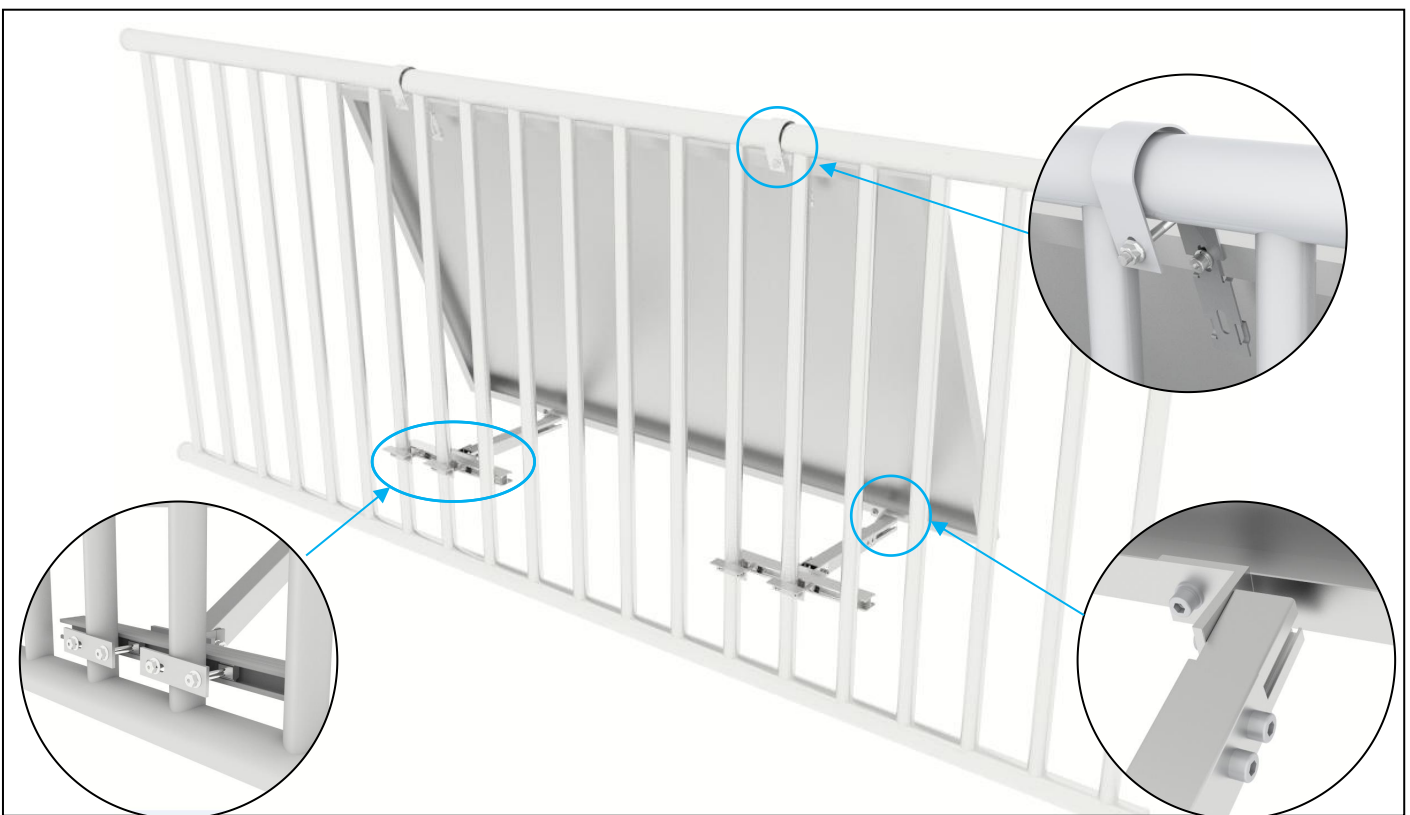


Solar Balcony mounting structure manufactured with 6005-T5 aluminum alloy and 304 stainless steel , which is a pre-assembled mounting structure for solar PV installations onto high-rise balconies. This balcony mounting design can affix to most common size balconies. With all pre-assembled parts, the installation can be done in a very short time.

## Features & Benefits

- a) Simple and fast installation with all pre-assembled parts, simply need to be unfolded and secured to the balcony for installation.
- b) Excellent corrosion resistance and durability
- c) Solar Balcony structure can be attached to the balconies of buildings directly, requiring very little space while generating sustainable energy for daily use.

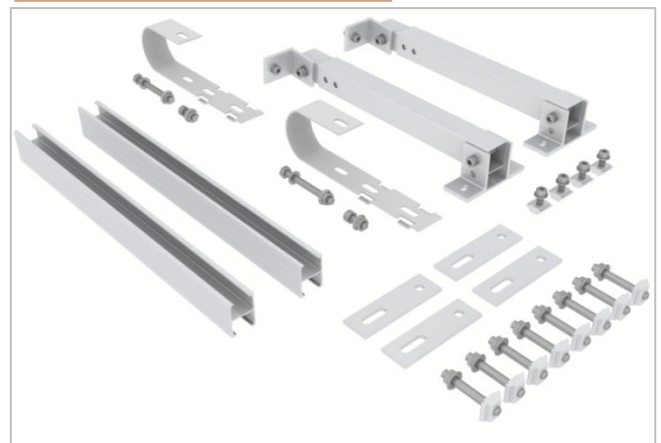
## Balcony structure type A



Front View



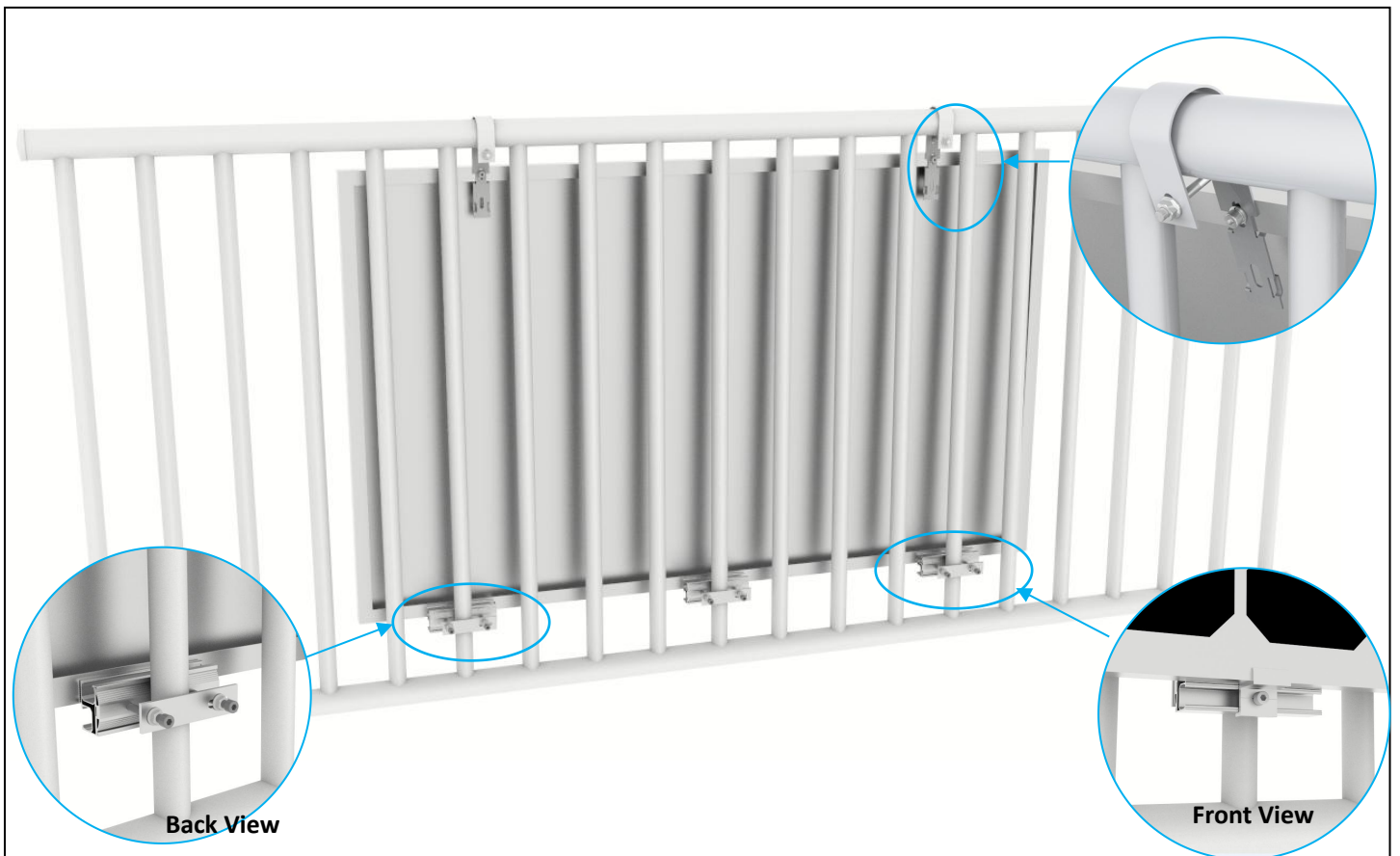
Components List



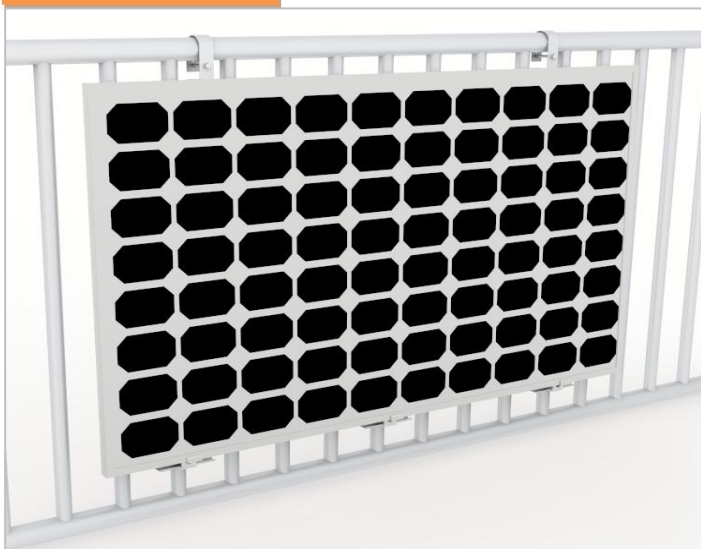
## Technical Information:

- Installation Site: Balcony
- Module Orientation: Landscape
- Module Type: Framed
- Material: Aluminum 6005-T5 & SUS 304
- Tilt Angle: 0°~ 30°
- Warranty: 12 Years

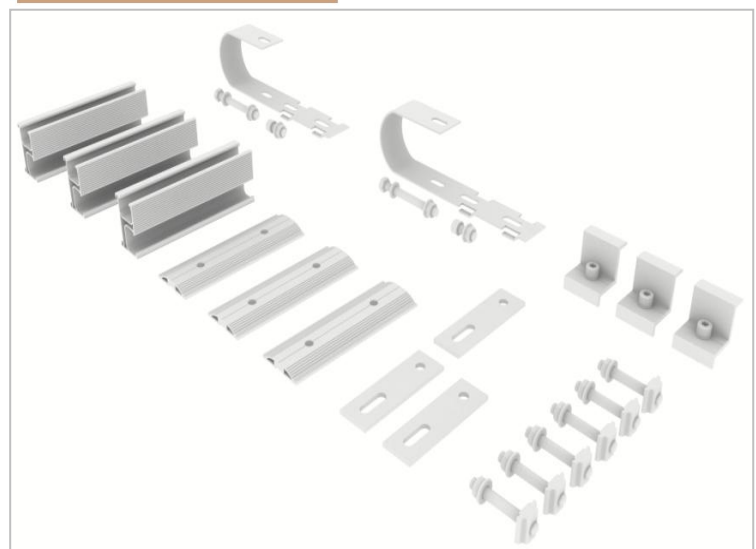
## Balcony structure type B



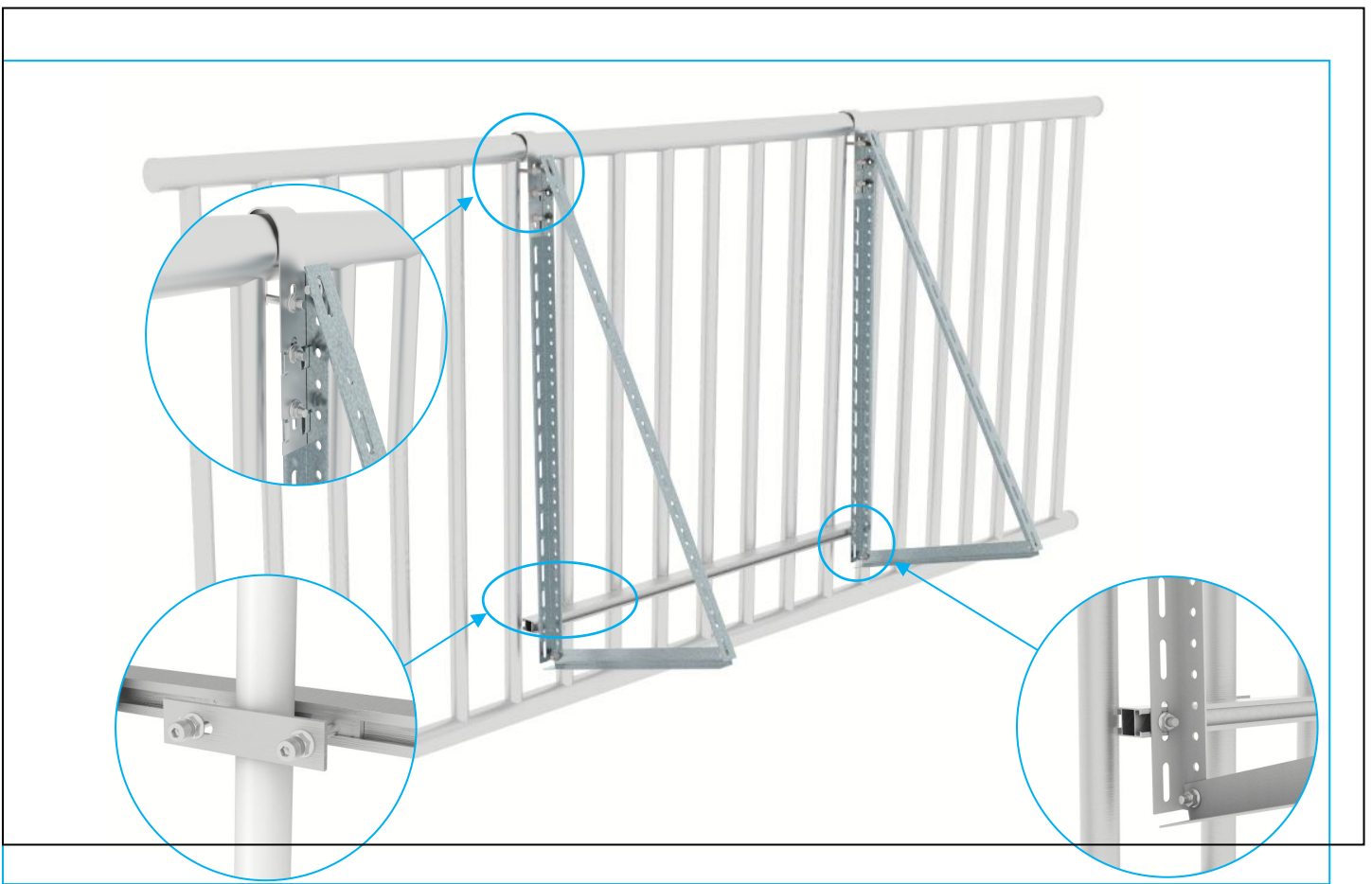
## Front View



## Components List



## Balcony structure type C



### Front View



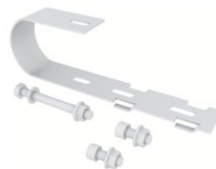
### Components List



MG-RC-CL4



MG-ZAM-TM-30



MG-SS-BH-02



MG-CS-TB



MG-AGM-EC-K-F30