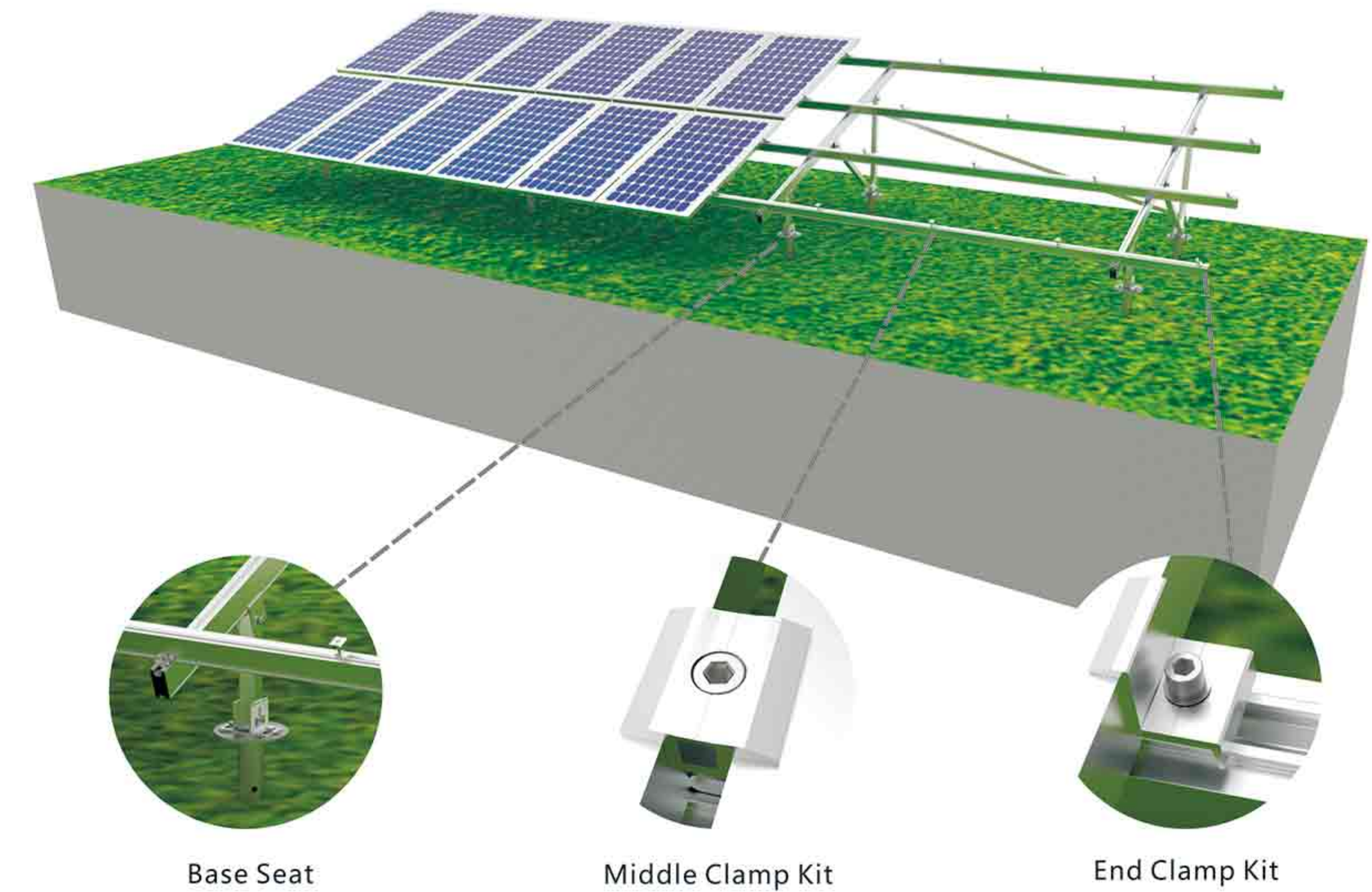




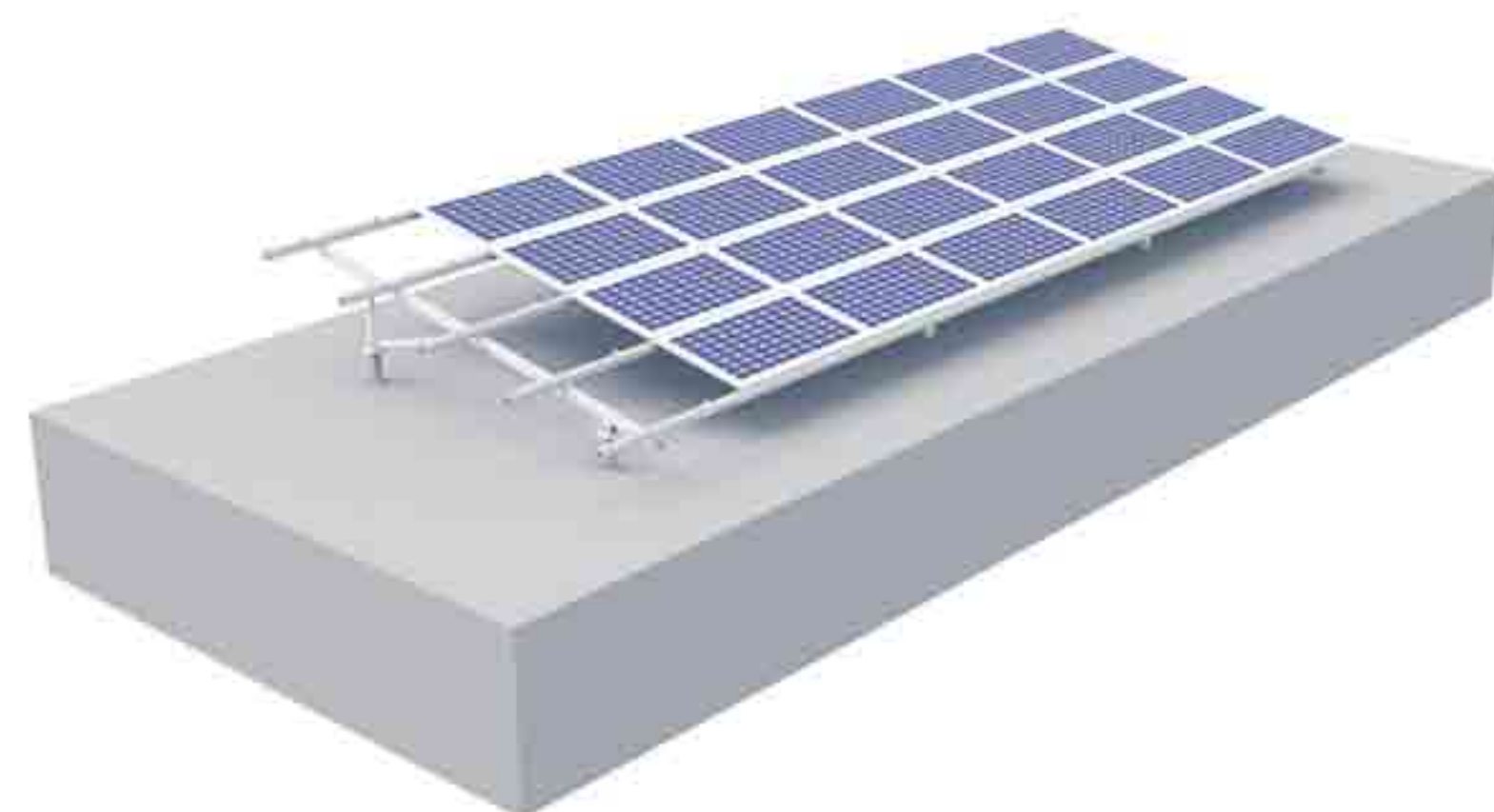
Aluminum Ground Mounting System



Features

Aluminum ground mounting system uses anodized aluminum alloy structure, making the whole system light-weight, durable, recyclable and highly strong. Flexibility in height and angle adjustment makes the system applicable for different types of land forms.

Components



Technical Parameter	
Application	Ground
Tilt Angle	0° - 45°
Foundation	Concrete Base/Ground Screw
Wind Load	≤60 m/s
Snow Load	≤2.4 KN/m ²
Module Orientation	Landscape/Portrait
Standards	ASCE_7-10, JIS C8955: 2017, EN1090, International Building Code IBC 2009
Material	AL6005-T5(Anodized)&SUS304

