
Solar battery backup middle size battery SL12-150



FEATURES

- 1.Features: AGM separator paper reduces battery internal resistance, prevents micro-short circuit, and prolongs cycle life.
- 2.Material: ABS battery shell material, impact resistance, corrosion resistance, high temperature resistance. High purity material.
- 3.Technology: The sealed maintenance-free technology makes the battery seal better, without daily maintenance, and the bumpy state prevents liquid leakage.
- 4.Application field: Telecom system, outdoor backup power supply system, stionary/standby power system, industrial data base system, etc

QUALITY

1. 100% Pre-delivery inspection to ensure stable quality and reliable performance.
2. Pb-Ca grid alloy battery plate, Refined temperature-controlled curing new process.
3. Low internal resistance, good high rate discharge performance.
4. Excellence high-and-low temperature performance, working temperature ranging from -25°C to 50°C.
5. Design float service life: 5-7 years.

COMPANY PROFILE

Business Type: Manufacturer/Factory.

Main Products: Lead acid batteries, VRLA batteries, Motorcycle batteries, storage batteries, Electronic Bike batteries, Automotive batteries and Lithium batteries.

Year of Establish: 1995.

Management System Certificate: ISO19001, ISO16949.

Location: Xiamen, Fujian.

EXPORT MARKET

1. Southeast Asia: India, Indonesia, Malaysia, Philippine, Myanmar, Vietnam, Cambodia, etc.
2. Africa: South Africa, Algeria, Nigeria, Kenya, Mozambique, Egypt, etc.
3. Middle-East: Yemen, Iraq, Turkey, Lebanon, etc.
4. Latin and South American: Mexico, Colombia, Brazil, Peru, etc.
5. Europe: Italy, UK, Spain, Portugal, Ukraine, etc.
6. North America: USA, Canada.

PAYMENT&DELIVERY

Payment Terms: TT, D/P, LC, OA, etc.

Delivery Details: within 30-45 days after order confirmed.

PRODUCT SKU

Model	Voltage	Capacity	Intemal	Dimension	Terminal	Weight	Terminal
	(V)	(Ah)	Resistance (mΩ)	(mm)	Type	(kg)	Direction
SL6-36	6	36	4.5	162*88*16 4*170	F2	5.6	- +
SL6-42	6	42	4.2	162*88*16 4*170	F2	6.1	- +
SL6-100	6	100	3	194*170*2 05*210	F14	15.5	- +
SL6-150	6	150	2.5	260*180*2 45*250	F13	23	- +
SL6-180	6	180	2.2	307*169*2 20*225	F13	27	- +
SL6-200A	6	200	2	307*169*2 20*225	F13	29	- +
SL6-200	6	200	2	321*176*2 26*229	F13	29.5	- +
SL6-300	6	300	1.5	295*178*3 45*348	F13	47	- +
SL12-24L	12	24		195*130*1 55*166	F14	8.2	
		29		195*130*1 55*166	F14	9.1	
SL12-31	12	31	11	195*130*1 55*166	F14	9.6	+ -
SL12-33	12	33	10	195*130*1 55*166	F14	10	+ -
SL12-35	12	35	9	195*130*1	F14	10.5	+ -

				55*166			
SL12-38	12	38	9	197*165*1 70*170	F14	12	- +
SL12-40	12	40	8.5	197*165*1 70*170	F14	12.5	- +
SL12-42	12	42		197*165*1 70*170	F14	13.3	- +
				197*165*1 70*170	F14	13.5	- +
SL12-45	12	45	8	197*165*1 70*170	F14	14	- +
SL12-33S	12	33		229*138*2 11*214	F14	13	
		40		229*138*2 11*214	F14	13.6	
		45		229*138*2 11*214	F14	15	
SL12-50	12	50	7.5	229*138*2 11*214	F14	15.5	+ -
SL12-55	12	55	7	229*138*2 11*214	F14	16.5	+ -
SL12-50A	12	50	7.5	229*138*2 05*210	F19	15.5	+ -
SL12-55A	12	50	7.5	260*168*2 11*214	F14	18.5	
SL12-60	12	60	7	260*168*2 11*214	F14	20	+ -
SL12-70	12	70	6.5	260*168*2 11*214	F14	21.5	+ -
SL12-75	12	75		260*168*2 11*214	F14	22.5	+ -
SL12-80	12	80	5.5	260*168*2 11*214	F14	23	+ -
SL12-40S	12	40		350*167*1 79*179	F14	15.7	
SL12-50S	12	50			F14	17	
SL12-54	12	54			F14	18	
	12	60			F14	19	
SL12-65	12	65	6		F14	20	- +
SL12-70A	12	70			F14	21	
SL12-80A	12	80	6		F14	23.5	- +
SL12-90V	12	70		306*169*2 11*214	F14	23.5	
SL12-90E	12	90	5	306*169*2 11*214	F14	26	+ -
SL12-90	12	90	5	306*169*2 11*214	F14	26.5	+ -
SL12-70S	12	70		330*171*2 14*220	F14	24.5	
6GMF80S	12	80		330*171*2	F14	25.5	

				14*220			
SL12-90AE	12	90	5	330*171*2 14*220	F14	27	+ -
SL12-90A	12	90	5	330*171*2 14*220	F14	27.5	+ -
SL12-100E	12	100	4.5	330*171*2 14*220	F14	29	+ -
SL12-100	12	100	4.5	330*171*2 14*220	F14	29.5	+ -
SL12-110	12	110	4.5	330*171*2 14*220	F14	32	+ -
SL12-130	12	130		330*171*2 14*220	F14	33.4	
SL12-120A	12	120	4	409*176*2 25*225	F13	34	+ -
SL12-90S	12	90	5	406*173*2	F13	29.5	+ -
SL12-100S	12	100	4.5	08*238	F13	31	+ -
SL12-110S	12	110	4.5		F13	32	+ -
SL12-120	12	120	4		F13	34	+ -
SL12-120B	12	120	4	280*265*2		36.5	
SL12-130B	12	130		07*227		38.5	
SL12-135	12	135		340*172*2	F13	40.5	
SL12-135	12	135	3.5	82*284	F13	42.5	+ -
SL12-110S	12	110		485*172*2	F13	35	
SL12-120S	12	120		40*240	F13	37.5	
SL12-135S	12	135	3.5		F13	40.5	+ -
SL12-150	12	150	3.5		F13	43	+ -
SL12-150	12	150		530*207*2	F13		
SL12-160	12	160	4	10*213	F13	49.5	干
SL12-180	12	180	3.5		F13	52.5	干
SL12-180S	12	180	3.5	522*238*2	F13	55.5	干
SL12-190S	12	190		18*221	F13	57	干
SL12-200	12	200	3		F12	59.5	干
SL12-220	12	220			F13	61	干
SL12-225	12	225			F13	63	干
SL12-250	12	250	2.6	521*269*2 20*223	F13	71	干

PACKING&SHIPMENT



Packaging: Kraft brown outer box/Colored boxes.
FOB XIAMEN or other ports.
Lead Time: 20-25 Working Days

MAINTENANCE CHECKLIST

As per the epidemic of COVID-19, many places are locked down or carrying out quarantine policy, which would cause the consumption ability going down and the longer the storage time of the cargoes/goods. Considering the characteristics of lead acid batteries, here is the [lead acid battery](#) maintenance checklist.

Recharge:

recharge voltage 14.4V-14.8V, recharge currency 0.1C, constant voltage charging time: 10-15 hours.

If not recharged, the batteries may not be working due to high internal resistance.

Recharge 30 mins of the [dry charged batteries](#) if it is stocked in warehouse more than one year; or the battery internal plates are oxidated in winter season with low temperature environment (recharge [voltage 14.4V-14.8V](#), recharge currency 0.1C).

Do not turn the battery upside down in case acid leakage from the safety valve.

If leakage happening, please take the leaking batteries from the others and clean it; in case the acid causes batteries short circuit. After cleaning the leaking batteries, please recharge the batteries as above steps.

Songli Battery is a global lead-acid battery technology expert. In addition, we have become one of the world's most successful independent battery manufacturers. We sincerely thank you for your always trust on our battery products and service, and we are also improving ourselves and products to provide you more excellent products and service.

Recommended temperature for lead acid battery maintenance:

10 ~ 25°C (High temperature would speed up the battery self-discharge) . Keep the warehouse clean, ventilated and dry, and avoid direct sunlight or excessive humidity.



Warehouse management principle: First in First Out.



Those batteries which are stocked in warehouse with longer time sold in priority, in case the battery voltage under low. It is better to divide different storage areas in the warehouse according to the arrival date as shown on the cargoes package.

Testing and inspecting of the sealed MF batteries' voltage every 3 months in case the batteries' voltage under low or cannot start up.

Take the 12V series battery for instance, please recharge the batteries if the voltage is under 12.6V; or the battery may not start up.

[Lead acid batteries](#) stocked in the warehouse more than 6 months, please do the voltage inspection

and recharge the batteries before selling to ensure the batteries in normal status.



Steps of battery recharge and discharge:

- ① Battery Charge: charge voltage 14.4V-14.8V, charging current : 0.1C , constant voltage charging time : 4 hours.
- ② Battery Discharge : discharge current : 0.1C, End of discharge voltage 10.5V of each battery.
- ③ Battery Recharge : recharge voltage 14.4V-14.8V, recharge current: 0.1C , constant voltage charging time: 10-15 hours.

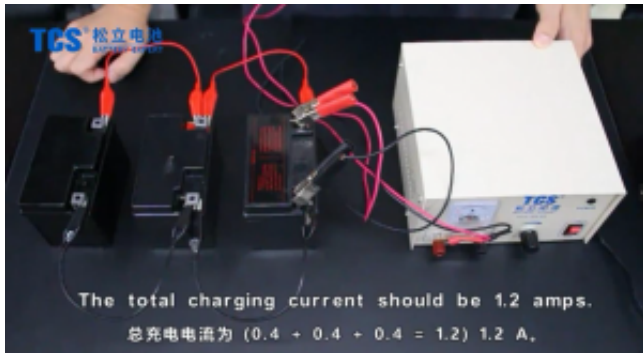
As following picture shown, please coordinate with our sales team if there is any questions about the usage of the device and then we could provide you the operation video.



Steps of manual recharge and discharge operation:

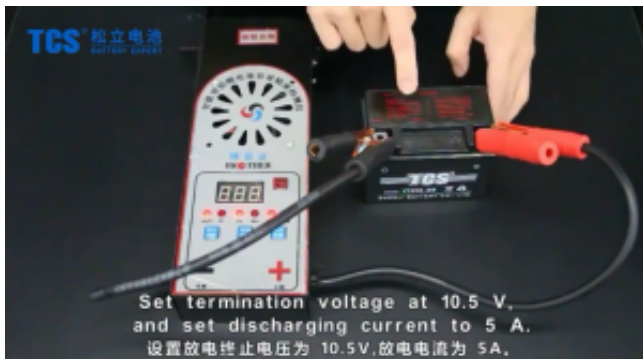
3.2.1.Charge: charge voltage 14.4V-14.8V, charge current : 0.1C , constant voltage charging time : 4 hours.

If operation video needed, please inquiry with our sales team. Thanks.



Discharge:

Quick discharge the batteries at 1C discharge rate until the battery voltage down to 10.5V. If operation video needed, please inquiry with our sales team. Thanks.



Product link : <https://www.songligroup.com/storage-battery-middle-size-battery-sl12-150.html>