

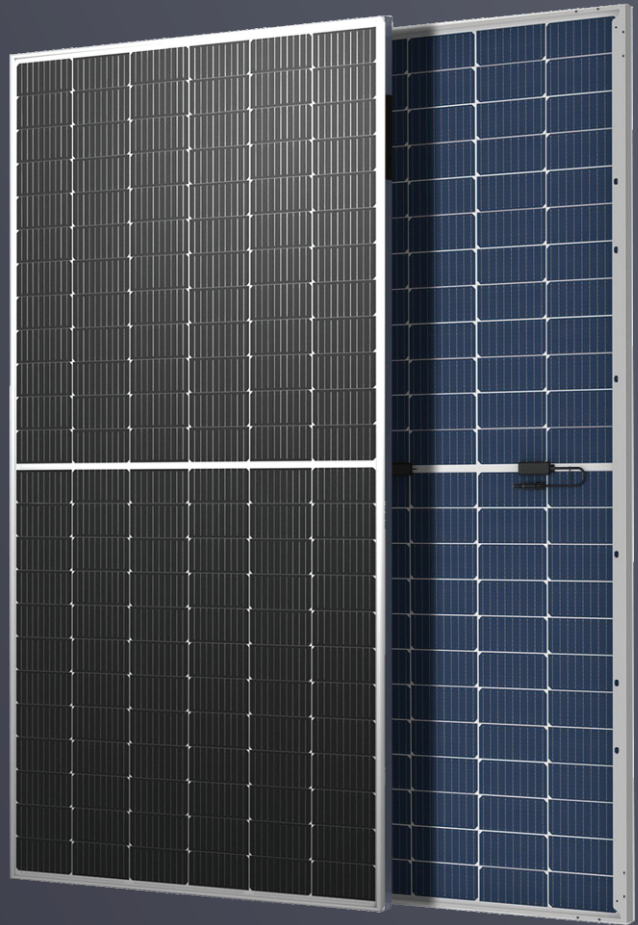
## HALF CELL LS530BF - LS550BF

**144 CELL**  
MONOCRYSTALLINE MODULE

**530W-550W**  
POWER OUTPUT RANGE

**21.28%**  
MAXIMUM EFFICIENCY

**0 to +3%**  
POSITIVE POWER TOLERANCE



**DESIGNED IN USA  
MADE IN ARMENIA**

### 25 YEAR WARRANTY Main Characteristics



Mismatch loss reduction for maximum efficiency



Reduced power loss by minimizing the effect of shadow shading



Competitive low light performance



Two EL tests to ensure the best quality

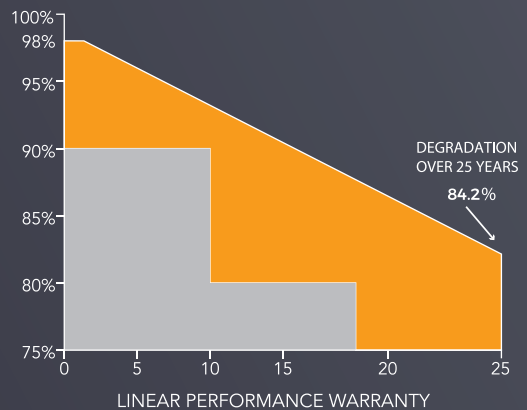


BOS's reduced and increased ROI is ideal for commercial and industrial scale projects



Proven reliability through PVEL's rigorous weatherproofing tests:

- Dust, acid and alkali resistance, hail test
- 2400pa wind pressure and 5400pa snow pressure
- Anti PID



#### QUALIFICATIONS AND CERTIFICATES



UL/IEC61215, UL/IEC61730  
ANTI-PID IEC TS 62804-1:2015  
ISO9001, ISO14001, ISO45001

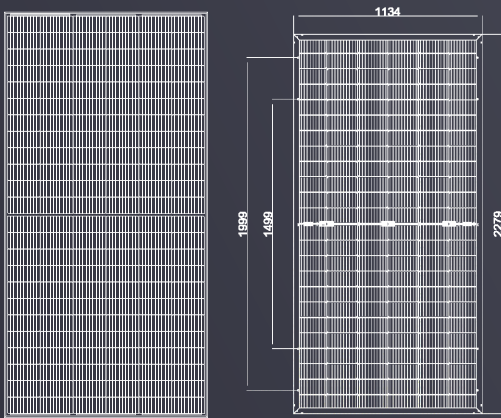


# Electrical Characteristics

Component Model	LS530BF	LS535BF	LS540BF	LS545BF	LS550BF
	STC	STC	STC	STC	STC
Maximum Power (PMP)	530	535	540	545	550
Open Circuit Voltage (VOC)	49.3	49.4	49.5	49.6	49.7
Short Circuit Current (ISC)	13.6	13.70	13.81	13.92	14.02
Maximum Power Voltage (VMP)	41.03	41.29	41.55	41.81	42.07
Maximum Power Current (IMP)	12.92	12.96	13.00	13.04	13.08
Component Efficiency ( $\eta_c$ )	20.56	20.76	20.95	21.14	21.28
Power Tolerance	(0, +3%)				
Maximum System Voltage	1500V DC				
Maximum Rated Fuse Current	35 A				

STC: Irradiance 1000 W/m<sup>2</sup> module temperature 25 °C AM=1.5

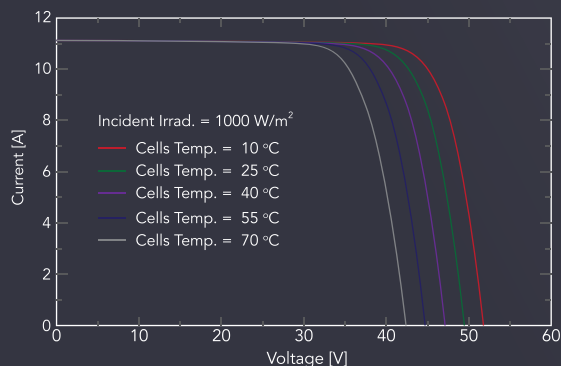
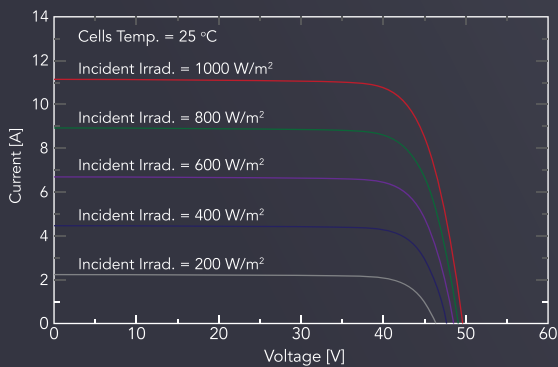
## DIMENSIONS OF PV MODULE



## Temperature Characteristics

Maximum Power Temperature Coefficient	-0.35 % / °C
Temperature Coefficient Of Open Circuit Voltage	-0.27 % / °C
Temperature Coefficient Of Short Circuit Current	+0.05 % / °C
Working Temperature	-40 ~ +85 °C
Nominal Operating Cell Temperature (NOCT)	45 ± 2 °C

## I-V Curve



## Structural Characteristics

Module Size	90x45x1.5 in
Weight	57lbs (26.5kg)
Battery	single crystal PERC 7x3.6 in (144pieces)
Glass	3.2mm tempered coated glass, low iron
Frame	anodized aluminum alloy
Junction Box	IP68, 3 diodes
Output Lead	4.0mm 2250mm(+) / 350mm(-) or customized
Mechanical Load	front 5400pa / back 2400pa

## Packing Method

Module Size	90x45x1.5in
Container	40' HQ
Quantity Per Pallet	31
Number Of Pallets Per Container	20
Quantity Per Container	620