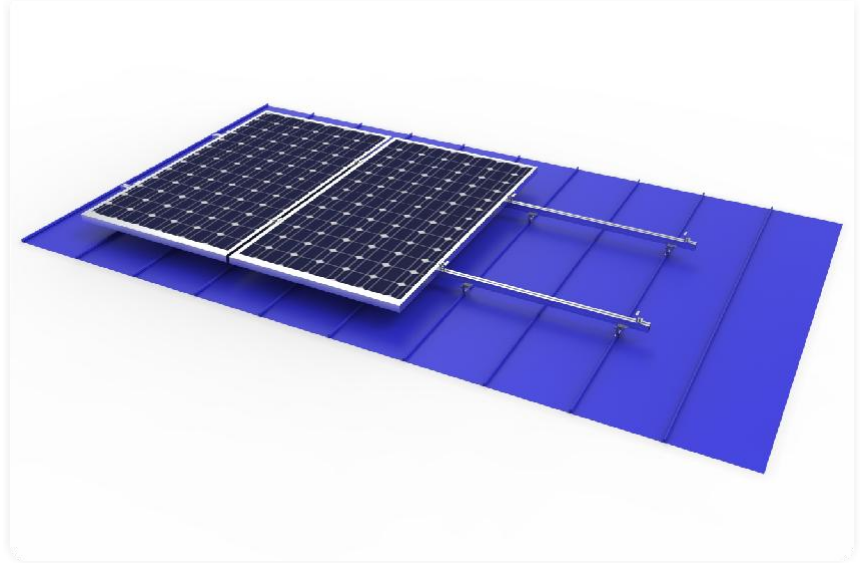


Product Introduction

The vertical edge locking clamps and angle type clamps are mounted onto the tin roof directly without any perforation or drilling, which makes the roof water-proof. These clamps are widely used in the warehouse or workshop tin roofs which are structure efficient and durable.



3. Tin Roof Standing Seam Clamp Mount

Parameter

Wind Load: : 44M/S

Snow Load: : 0.8KN/M²

Span Range: 0.1-1.8M

Design Standard:AS/NZS1170, ASCE7-05, DIN1044,

BSEN1990:2002,BSEN1991-1-3:2000,

BSEN199-1-4:2005

Installation Site: Metal Roof

Main Material:AL6005-T5/SUS304

Fastener Material: :SUS304

PV Module:Framed/Unframed

Module Layout:According to requirements

Warranty:10 Years



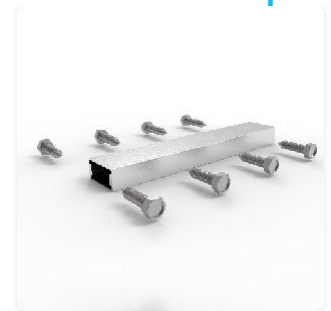
End Clamp



Mid Clamp



Light Rail



Rail Splicer



Seam Clamps



Other Clamps