

# YUKON Series

Black Diamond  
Half-cell Monofacial Module

**400-415W**  
Module Power Output

**21.25%**  
Max Efficiency



## Key Features



High module conversion efficiency



Better temperature coefficient



Super multi busbar technology



Low attenuation long warranty



Superior load capacity



Aesthetic appearance

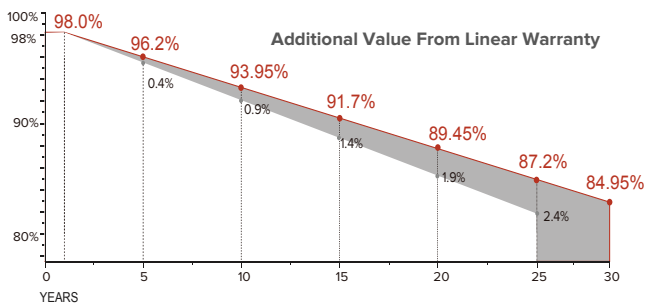


USA based liability insurance



Houston, Texas based company

## Warranty



**30** <Years> Guarantee on product material and workmanship

**30** <Years> Linear power output warranty

## Product Certification

IEC61215:2016; IEC 61730:2016; UL1703; UL61730/CSA/CEC

IEC62804

PID

IEC61701

Salt Mist

IEC62716

Ammonia Resistance

IEC60068

Dust and Sand

IEC61215

Hailstone

Fire Type (UL61730):Type29

ISO14001:2015; ISO9001:2015; ISO45001:2018



## About SEG Solar

SEG Solar is a leading manufacturer of high-performance solar panels for residential, commercial, and utility applications. The company, headquartered in Houston, Texas, is committed to providing cost-effective and reliable solar solutions that help customers reduce their energy costs and carbon footprint.



Download Datasheet

## Electrical Characteristics

Module Type	SEG-400-BMD-BG		SEG-405-BMD-BG		SEG-410-BMD-BG		SEG-415-BMD-BG	
	STC	NOCT	STC	NOCT	STC	NOCT	STC	NOCT
Maximum Power -Pmp(W)	400	301	405	304	410	308	415	311
Open Circuit Voltage -Voc(V)	37.12	34.64	37.22	34.73	37.32	34.81	37.42	34.90
Short Circuit Current -Isc(A)	13.60	10.99	13.70	11.07	13.80	11.15	13.90	11.23
Maximum Power Voltage -Vmp(V)	30.81	28.82	30.93	28.91	31.05	29.05	31.16	29.19
Maximum Power Current -Imp(A)	12.99	10.44	13.10	10.51	13.21	10.59	13.32	10.66
Module Efficiency STC-ηm(%)	20.48		20.74		21.00		21.25	
Power Tolerance(W)	(0, +3%)							
Maximum System Voltage	1500V DC							
Maximum Series Fuse Rating	25 A							

STC: Irradiance 1000 W/m<sup>2</sup> module temperature 25°C AM=1.5

NOCT: Irradiance 800W/m<sup>2</sup> ambient temperature 20°C module temperature 45°C wind speed: 1m/s

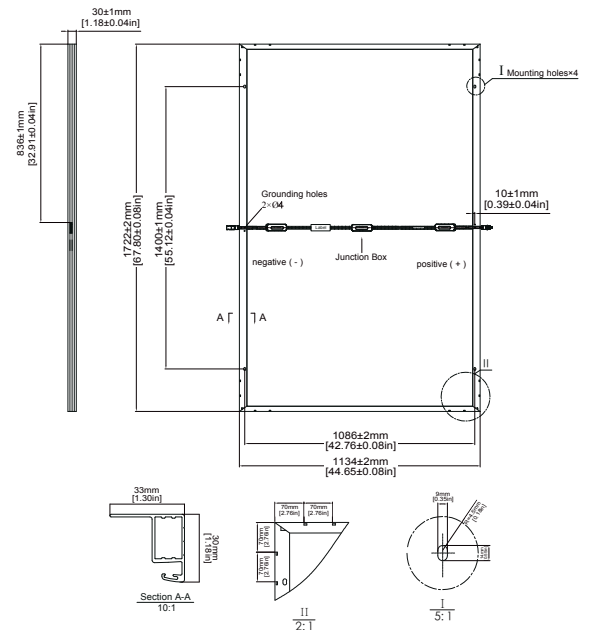
Power measurement tolerance: +/-3%

## Mechanical Specifications

External Dimension	1722 x 1134 x 30 mm
Weight	24 kg
Solar Cells	PERC Mono 182 x 91mm(108 pcs)
Front / Back Glass	2.0 mm AR coating semi-tempered glass / low iron
Frame	Black anodized aluminium alloy
Junction Box	IP68 / 3 diodes
Connector Type	MC4
Cable Type / Length	12 AWG PV Wire (UL) /1200 mm
Mechanical Load(Front)	5400 Pa / 113 psf*
Mechanical Load(Rear)	3600 Pa / 75 psf*

\*Refer to SEG installation Manual for details

## Technical Drawing



\*Refer to SEG installation Manual for details

## Packing Configuration

Container	20'GP	40'HQ
Pieces per Pallet	36	36
Pallets per Container	6	24
Pieces per Container	216	864

## Temperature Characteristics

Pax Temperature Coefficient	-0.35 %/°C
Voc Temperature Coefficient	-0.27 %/°C
Isc Temperature Coefficient	+0.05 %/°C
Operating Temperature	-40~+85 °C
Nominal Operating Cell Temperature (NOCT)	45±2 °C

## I-V Curve

