

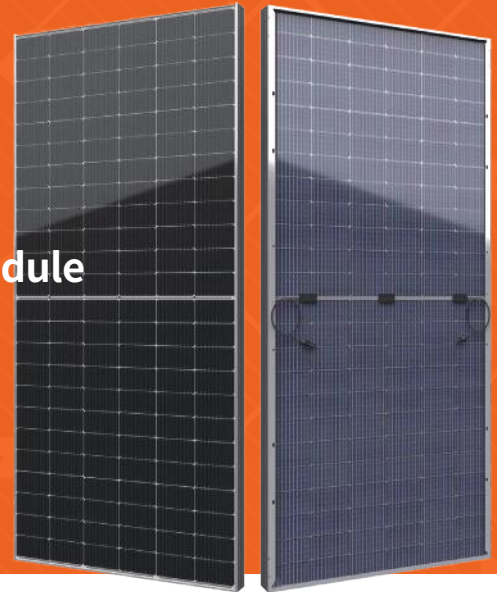
SSD—AH7G / 10BB

Monocrystalline High-efficiency Bifacial Solar Module

535W — 560W

21.7%

Module efficiency up to



Features



10BB half-cut cell technology

New circuit design, lower internal current, lower Rs loss

Ga doped wafer, attenuation $\leq 2\%$ (1st year) / $\leq 0.45\%$ (Linear)



Industry leading high yield

Bifacial PERC cell technology, 5%-25% more yield depends on different conditions



Anti
PID

Excellent Anti-PID performance

3 times of industry standard Anti-PID test



Wider application

No water-permeability and high wear-resistance, can be widely used in high-humid, windy and dusty area



IP68 junction box

High waterproof level

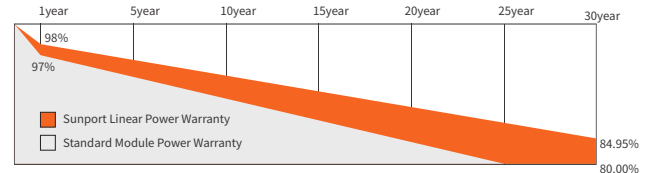
Performance Warranty

12年
Quality
Warranty

30年
Performance
Warranty

Insured by PAIC and LLOYD'S

PING AN LLOYD'S



Within the first year from the date of installation and normal operation, the output power shall not be less than 98% of the product's minimum output power as set forth in the specifications, Afterwards, maximum 0.45% output decrease per year. After 30 years, the product's output power shall not be less than 84.95% of its minimum output power as set forth in the specifications.

Comprehensive Qualifications & Certifications

- ★ ISO 9001:2015 Quality Management System
- ★ ISO 14001:2015 Environment Management System
- ★ ISO 45001: 2018 Occupation Health Safety Management System
- ★ TUV NORD Certification



Electrical Characteristics at Standard Test Conditions(STC)

| Spec/Model | Unit | SSD535AH7G | SSD540AH7G | SSD545AH7G | SSD550AH7G | SSD555AH7G | SSD560AH7G |
|----------------------------|------|------------|------------|------------|------------|------------|------------|
| Max-Power(Pm) | W | 535 | 540 | 545 | 550 | 555 | 560 |
| Power Tolerance | W | 0~+5 | | | | | |
| Max-Power Voltage(Vm) | V | 41.50 | 41.66 | 41.80 | 41.95 | 42.10 | 42.25 |
| Max-Power Current(Im) | A | 12.90 | 12.97 | 13.04 | 13.12 | 13.20 | 13.27 |
| Open-Circuit Voltage(Voc) | V | 49.50 | 49.63 | 49.75 | 49.90 | 50.05 | 50.20 |
| Short-Circuit Current(Isc) | A | 13.63 | 13.67 | 13.74 | 13.77 | 13.82 | 13.86 |
| Module Efficiency(ηm) | % | 20.7 | 20.9 | 21.1 | 21.3 | 21.5 | 21.7 |

STC: AM=1.5, Irradiation 1000W/m², Module Temperature 25°C

Electrical Characteristics at Nominal Module Operating Temperature (NMOT)

| Spec/Model | Unit | SSD535AH7G | SSD540AH7G | SSD545AH7G | SSD550AH7G | SSD555AH7G | SSD560AH7G |
|----------------------------|------|------------|------------|------------|------------|------------|------------|
| Max-Power(Pm) | W | 401 | 405 | 409 | 413 | 417 | 421 |
| Max-Power Voltage(Vm) | V | 38.25 | 38.40 | 38.55 | 38.70 | 38.85 | 39.00 |
| Max-Power Current(Im) | A | 10.50 | 10.55 | 10.61 | 10.68 | 10.74 | 10.80 |
| Open-Circuit Voltage(Voc) | V | 46.25 | 46.40 | 46.55 | 46.70 | 46.85 | 47.00 |
| Short-Circuit Current(Isc) | A | 10.89 | 10.94 | 10.99 | 11.03 | 11.06 | 11.11 |

NMOT: Irradiation 800W/m², Ambient temperature 20°C, Wind Speed 1m/s

Temperature Coefficient

| | |
|--------------------------------------|-----------|
| Nominal Module Operating Temperature | 43±2°C |
| Temperature coefficient of Pmax | -0.35%/°C |
| Temperature coefficient of Voc | -0.26%/°C |
| Temperature coefficient of Isc | 0.048%/°C |

Package

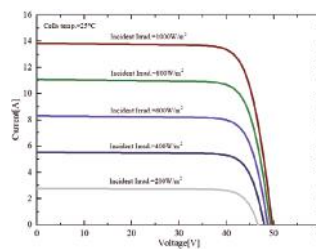
| Transportation | Container Size | Quantity (pcs) | Quantity (per pallet) |
|------------------|----------------|----------------|-----------------------|
| Container | 40' HQ | 720 | 36 |
| Platform Trailer | 13m | 792 | 36 |
| Platform Trailer | 17.5m | 1080 | 36 |

Mechanical Characteristics

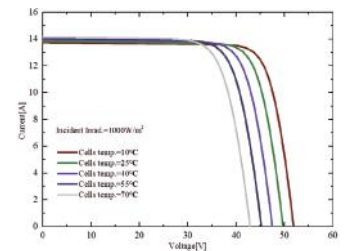
| | |
|------------------|---|
| Dimension(L×W×H) | 2277mm×1133mm×30mm |
| Weight | 31.0kg |
| Front Glass | High Transmittance Anti-reflective Coated Tempered Glass /2mm |
| Back Glass | Glazed Semi-tempered Glass/2mm |
| Solar Cell | 144(24x6) / 10BB Mono / Half-cell |
| Frame | Anodized Aluminum Alloy / Silver |
| Junction Box | IP68 |
| Cable | 4mm ² , 300mm or Customized Length |
| Connector | MC4 Compatible |

I-V Curve

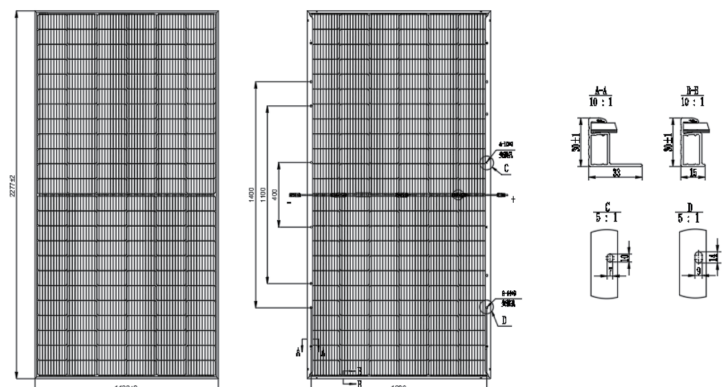
I-V Curves of SSD540AH7G at different irradiance



I-V Curves of SSD540AH7G at different cell temperature



Module Size



Operating Conditions

| | |
|-----------------------------|---|
| Max System Voltage | DC1500V(IEC) |
| Max Fuse Rated Current | 25A |
| Operating Temperature Range | -40°C~+85°C |
| Mechanical Load | 5400Pa (front) /2400Pa (rear) |
| Max Allowable Hail Load | φ25mm hail, from 1m of distance at 23 m/s |
| Application Class | Class A |
| Backside Output Ratio | 70%±5% |