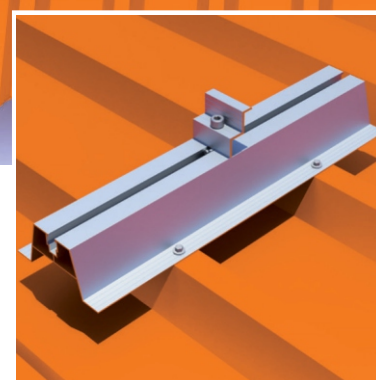
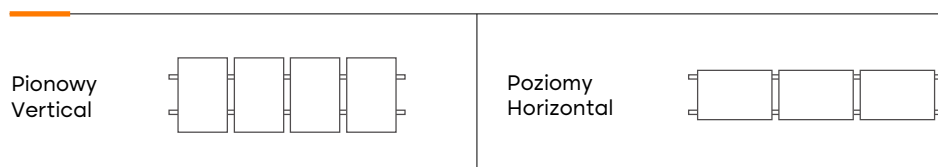





Układ paneli / Modules layout:





 **Material / Material**
Aluminium / Aluminum
Stal nierdzewna / Stainless steel

 **Waga systemu dla 4 modułów**
System weight for 4 modules:
5,74 kg - Pion / Vertical
5,74 kg - Poziom / Horizontal

 **Rozstaw między uchwytami**
Spacing between handles :
Umieścić co krawędź modułu
Place every edge of the module

 **Regulacja uchwytów**
Adjustability of handles:
Nie / No

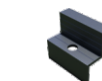
 **Montaż / Installation:**
Inwazyjny / Invasive

 **Spełniane normy / Standards:**
PB-TUV-78:2012
PN-EN 1991-1-3:2005
PN-EN- 1991-1-4:2008

 **Gwarancja / Guarantee :**
10 lat / 10 years

Dodatki / Accessories

Klemy końcowe czarne
Black end clamps



Klemy środkowe czarne
Black middle clamps

