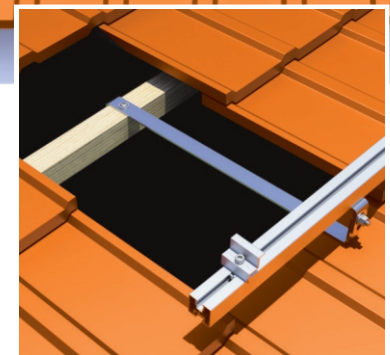
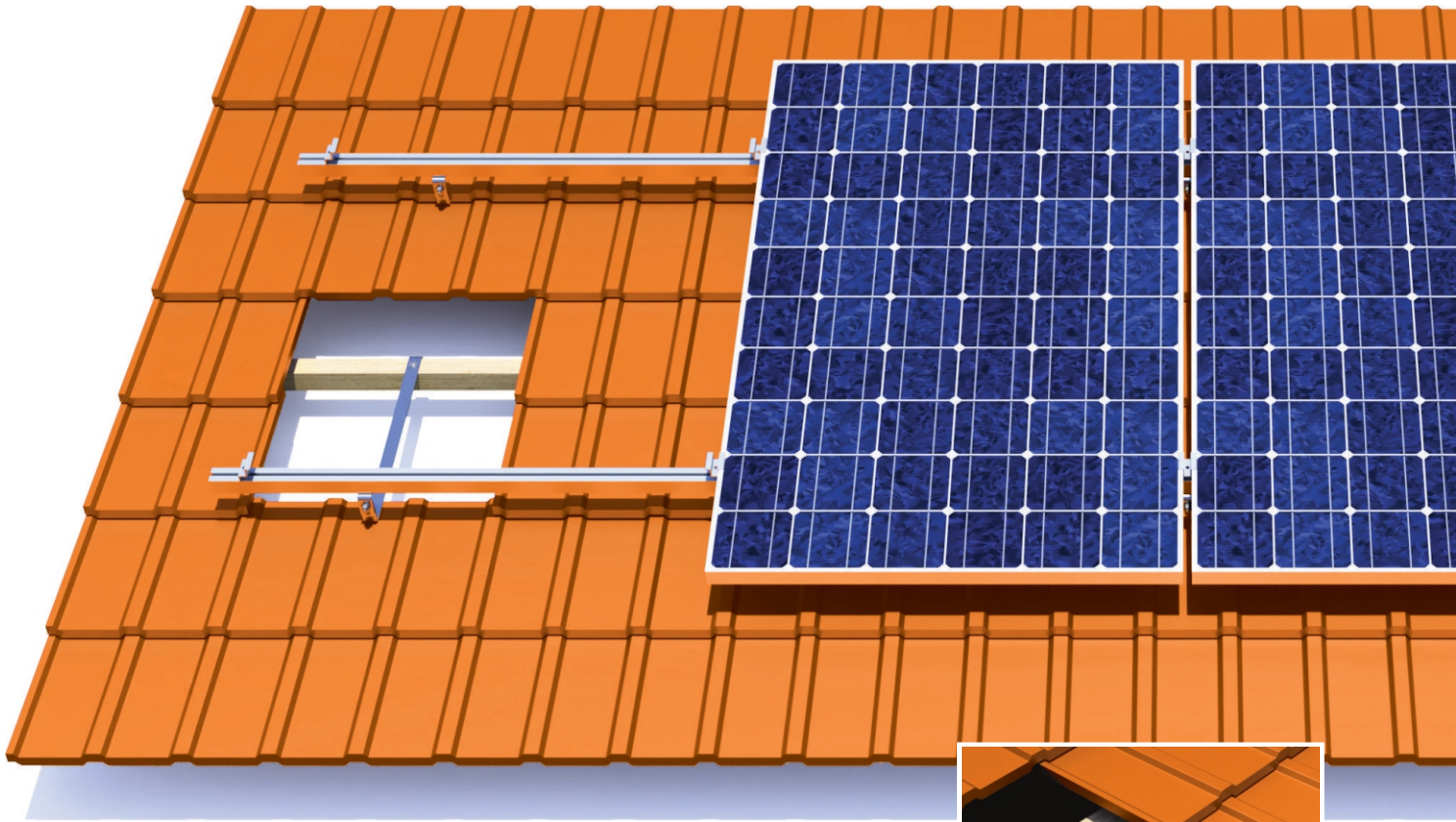




## SYSTEM KDS-C2



### Układ paneli / Modules layout:

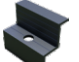


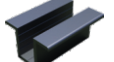
 **Material / Material**  
Aluminium / Aluminum  
Stal nierdzewna / Stainless steel

 **Montaż / Installation:**  
Inwazyjny / Invasive


### Dodatki / Accessories


Szyny czarne  
Black rails 


Klemy końcowe czarne  
Black end clamps 

Klemy środkowe czarne  
Black middle clamps 

Łączniki czarne  
Black connectors 


Zaślepki szyny czarne  
Black end caps 

 **Waga systemu dla 4 modułów**  
**System weight for 4 modules:**  
16,37 kg - Pion / Vertical  
26,76 kg - Poziom / Horizontal

 **Spełniane normy / Standards:**  
PB-TUV-78:2012  
PN-EN 1991-1-3:2005  
PN-EN- 1991-1-4:2008

 **Rozstaw między uchwytami**  
**Spacing between handles :**  
60 - 100 cm

 **Gwarancja / Guarantee :**  
10 lat / 10 years

 **Regulacja uchwytów**  
**Adjustability of handles:**  
Tak / Yes