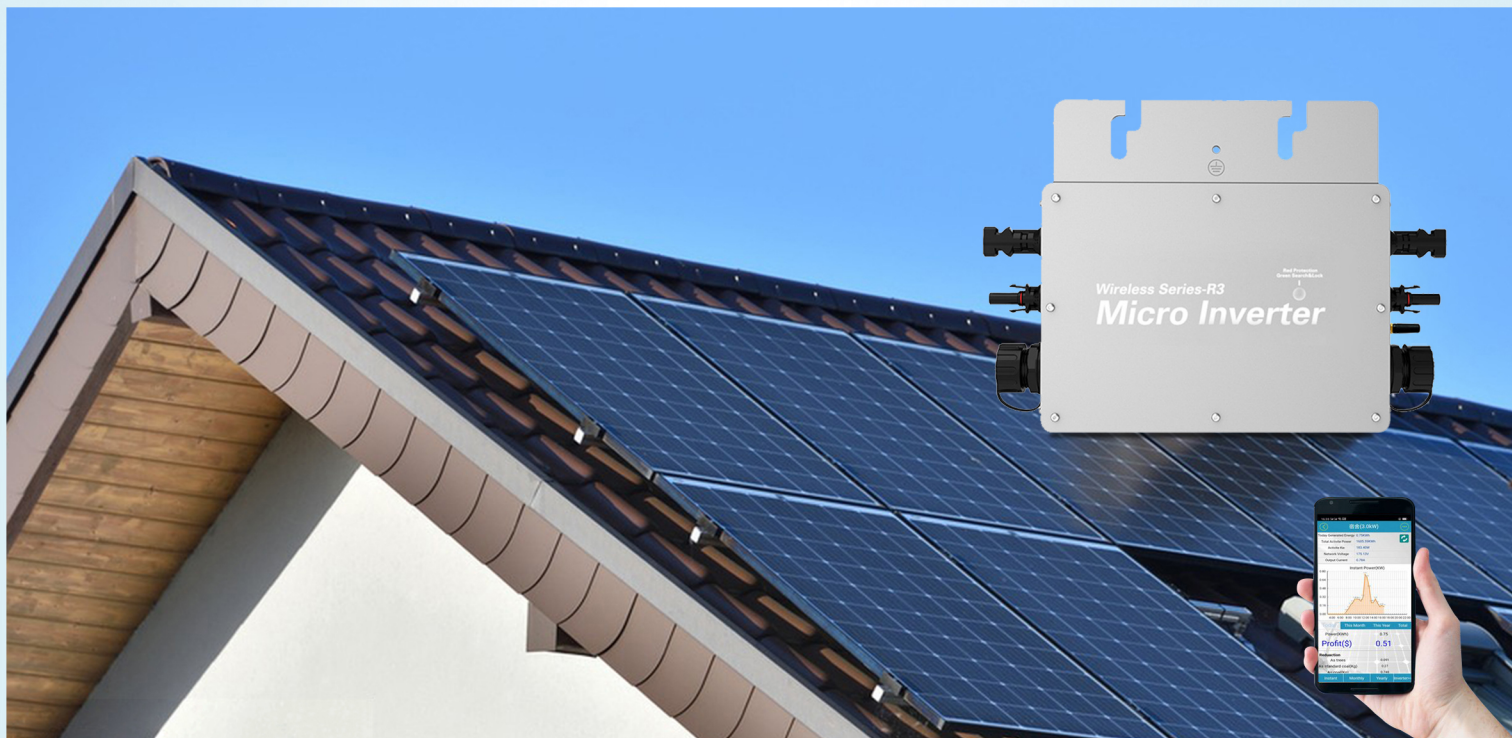


# 微型太阳能逆变器 Micro Solar Inverter



## 产品参数

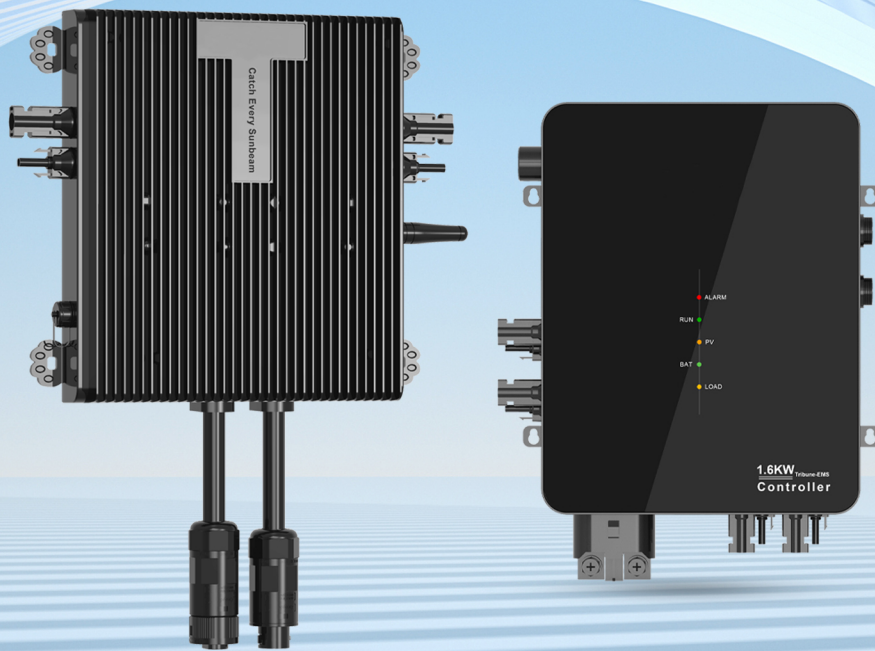
### Product parameters

型号 Model	WVC-300W	WVC-600W	WVC-1200W	WVC-2400W
额定输出功率 Rated Output Power	300W	600W	1200W	2400W
输出功率模式 Output Power Mode	120/230V	120/230V	120/230V	120/230V
开路电压范围 Open Circuit Voltage Range	33-54VOC	33-54VOC	33-54VOC	33-54VOC
最大输出工作电流 Max.Input Operating	11.5A	23A	48A	92A
额定电压范围 Rated Voltage Range	85-160V	85-160V	85-160V	85-160V
MPPT效率 Static MPPT Efficiency	99.5%	99.5%	99.5%	99.5%
额定输出电流 Rated outout current	2.5A/1.3A	5A/2.6A	10A/5.22A	20A/10.5A
夜间耗损功率 Power loss at night	<0.5W	<0.5W	<0.5W	<0.5W
额定频率范围 Rated frequency range	47~52/57~62Hz	47~52/57~62Hz	47-52/57-62Hz	47-52/57-62Hz
监控系统 Monitor System	Mobile APP, browser			
防水等级 Waterproof range	IP65	IP65	IP65	IP65
工作温度 Operation temperature	-10°C TO 50°C	-10°C TO 50°C	-10°C TO 50°C	-10°C TO 50°C
尺寸 Dimensions W*D*H (mm)	283*200*41.6	283*200*41.6	370*300*41.6	370*300*41.6
通信端口 Communication port	433MHz/ WIFI /Lot			
重量 Net Weight (kgs)	1.44	1.44	3.0	3.3



# 微型逆变器+控制器

## Micro Inverter + EMS Controller



### 产品参数

#### Product parameters

##### 微型逆变器 Microinverters

MPPT 追踪器数量 Number of MPPT Trackers	2
额定输出电压 Nominal Output Voltage	220/230Vac(187-278Vac) / 120V(60-144Vac)
额定频率/范围 Nominal Frequency/Range	50HZ/60HZ
功率因数 (可调节) Power Factor(Adjustable)	>0.99 Default, 0.8 Leading...0.8 Lagging...
静态 MPPT 效率 Static MPPT Efficiency	99%
连接器类型: 直流 Connector Type: DC	MC4
尺寸 (宽*高*深) Dimensions(W*H*D)	195*177*42MM
重量 Weight	2.8kg

##### 控制器 Controller

##### EMS 1.2KW

MPPT 跟踪器数量 Number of MPPT Trackers	2
最大光伏阵列功率 Max. PV Array Power	2 x 1 Tracker 600W
MPPT 跟踪效率 MPPT Tracking Efficiency	99.9%
转换效率 Conversion Efficiency	98%
电池类型 Battery Type	Sealed , AGM, Gel, Flooded, Lithium , Lithium carbonate, User-defined
电池电压 Battery Voltage	Standard 24V

