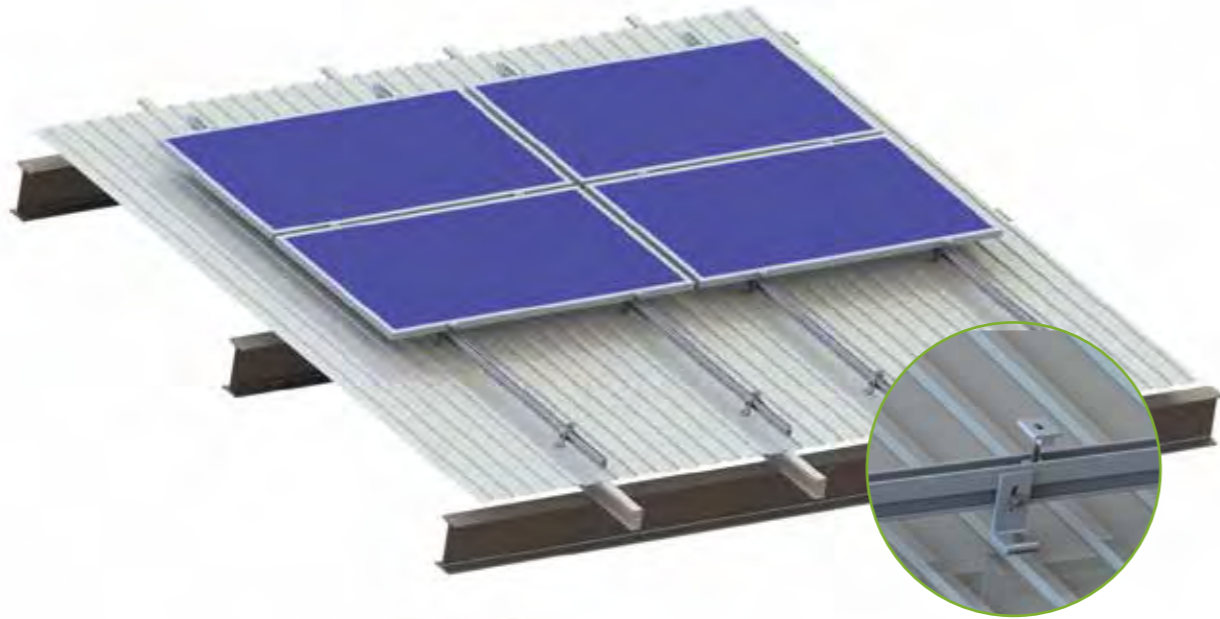


# Tin Metal Roof



CR 1# Rail  
KS-CR1-Length



CR Rail Splice Kit  
KS-CR1-SP

Tin Interface Kit L feet 1# Type  
KS-HK-L01-ZS80



Middle Clamp  
KS-IC2-F40

End Clamp  
KS-EC2-F40



**Application:**  
Trapezoidal and corrugated sheet metal

**Fastening:**  
Riveted or screwed onto raised corrugations

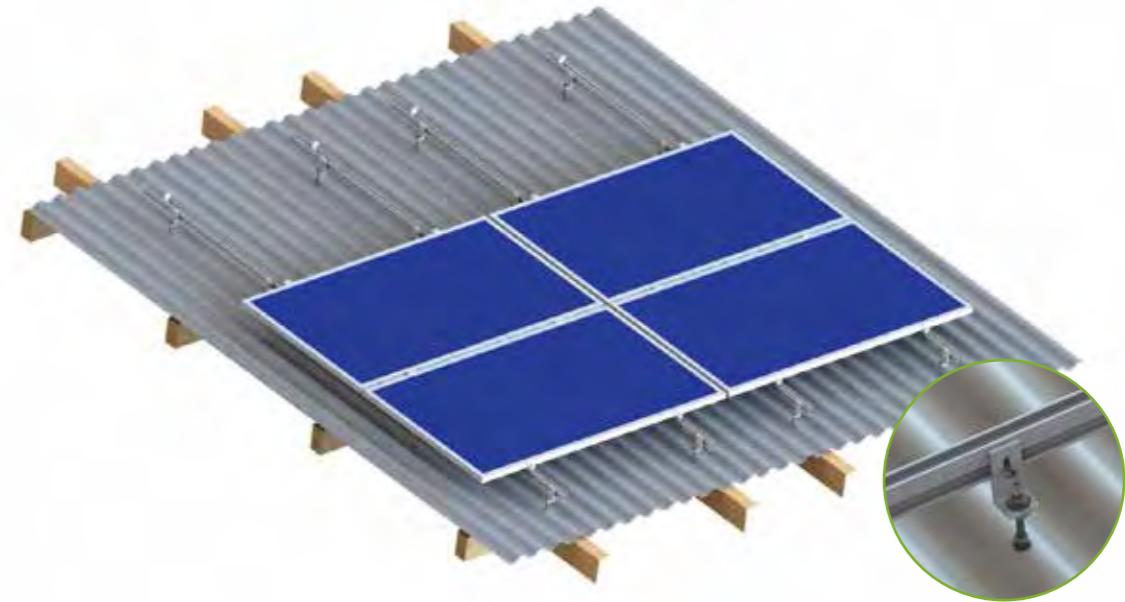
**Module Type:**  
Framed and frameless modules

**Module orientation:**  
Landscape/portrait

**Layers of Rails:**  
Single/double layer, cross rail installation

**Advantages:**  
Low fitting costs  
Every size of module array possible  
Height adjustable via elongated hole in the sheet metal bracket

# Tin Metal Roof



CR3# Rail  
KS-CR3-XXX



CR 1# Rail Splice Kit  
KS-CR1-SP

Hanger Bolt Hook #2  
KS-HK-L02



Middle Clamp  
KS-IC2-F40

End Clamp  
KS-EC2-F40



**Application:**  
Trapezoidal and corrugated sheet metal

**Fastening:**  
Hanger bolts onto rafters

**Module Type:**  
Framed and frameless modules

**Module orientation:**  
Landscape/portrait

**Layers of Rails:**  
Single/double layer, cross rail installation

**Advantages:**  
Low fitting costs  
Height adjustable  
Suitable for large distances between rafters