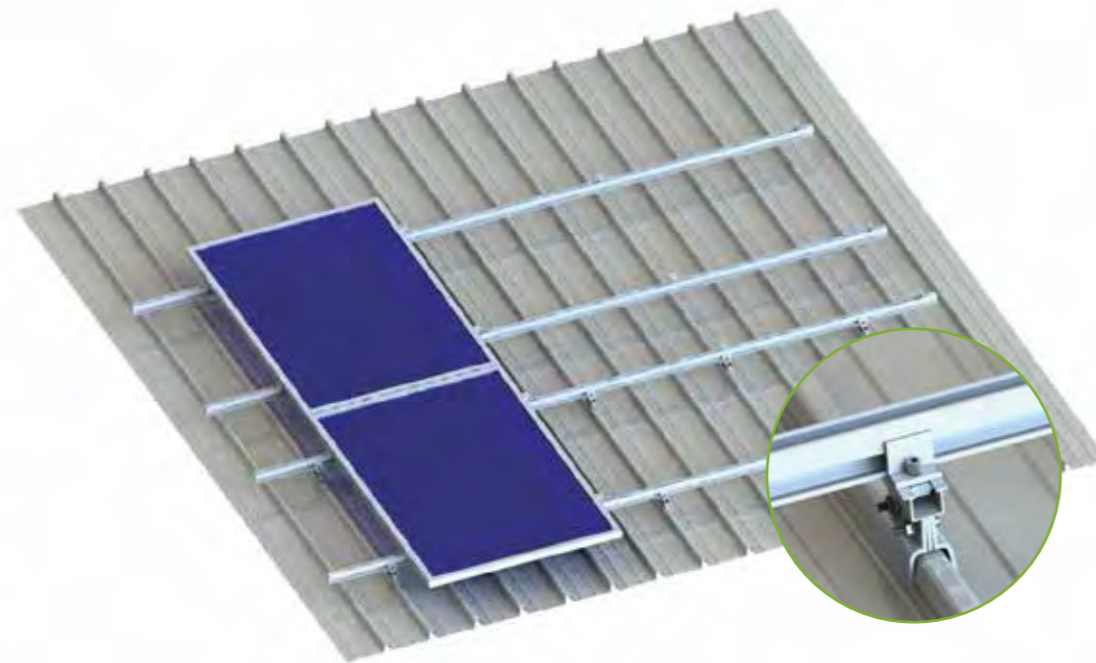


Standing Seam Roof



CR3# Rail
KS-CR3-Length



Application:
Standing Seam Roof

Fastening:
Roof hooks on Standing Seam Rib

Module Type:
Framed and frameless modules

Module orientation:
Landscape/portrait

Layers of Rails:
Single/double layer, cross rail installation

Advantages:
Low fitting costs
Every size of module array possible
For all common rafter distances



Klip-lok Hook #9
KS-HK-S09

CR Rail Clamp
KS-CRC-2AN



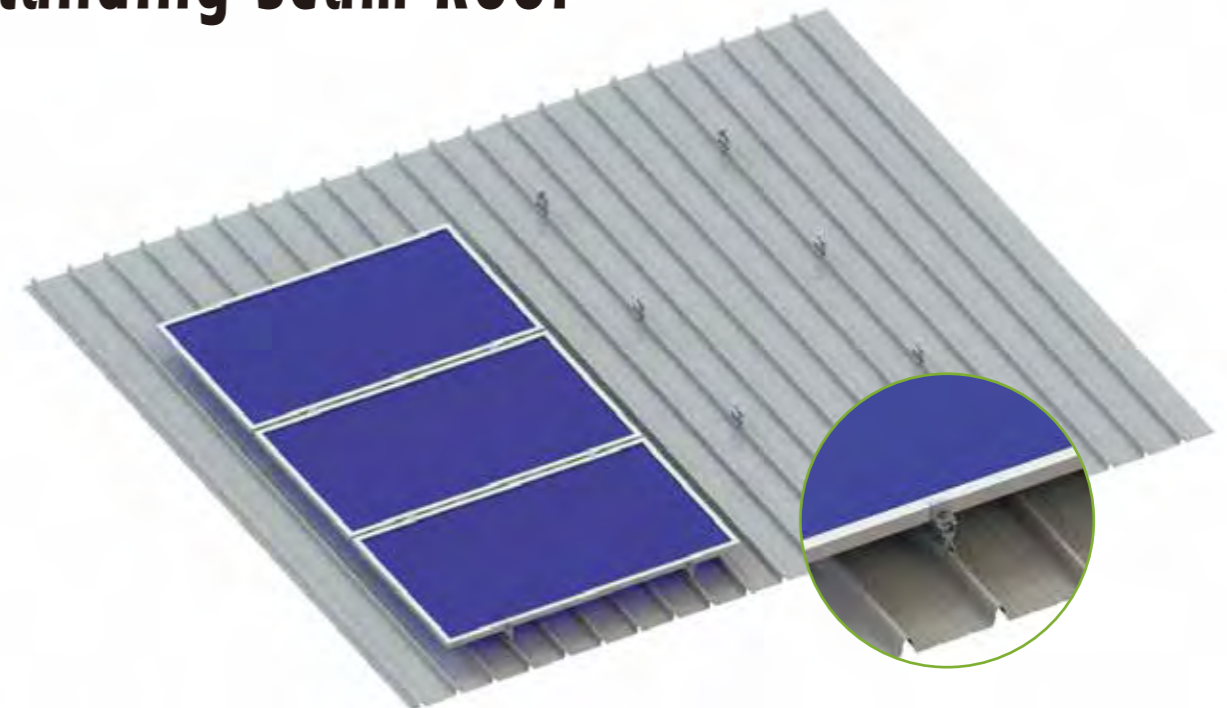
Middle Clamp
KS-IC2-F40



End Clamp
KS-EC2-F40



Standing Seam Roof



Standing Seam Hook #4
KS-HK-S04



End Clamp
KS-EC2-F40

Standing Seam Hook #10
KS-HK-S10



Middle Clamp
KS-IC2-F40



Application:
Standing Seam Roof

Fastening:
Roof hooks on Standing Seam Rib

Module Type:
Framed and frameless modules

Module orientation:
Landscape/portrait

Layers of Rails:
Single layer

Advantages:
Low fitting costs
Every size of module array possible
For all common rafter distances