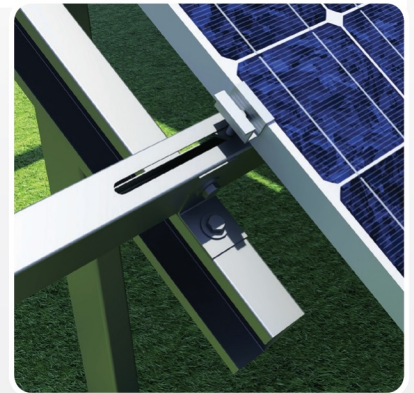
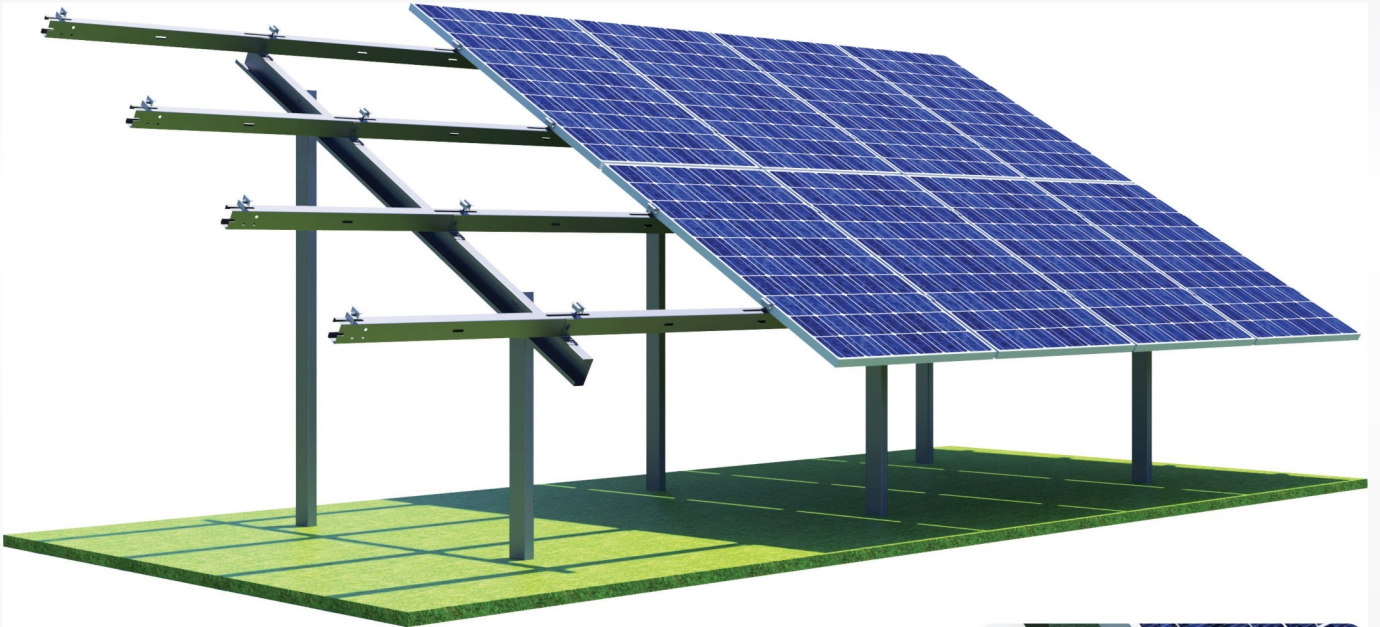




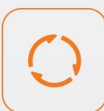
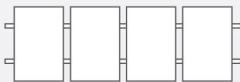
# SOLITAN

## KONSTRUKCJA NAZIEMNA/ GROUND MOUNTED SYSTEM KN-PIO1



### Układ paneli / Modules layout:

Pionowy  
Vertical



#### Material / Material

Aluminium / Aluminum  
Stal nierdzewna / Stainless steel  
Magnelis / Magnelis



#### Spełniane normy / Standards

PB-TUV-78:2012  
PN-EN 1991-1-3:2005  
PN-EN- 1991-1-4:2008



#### Waga systemu dla 16 modułów System weight for 16 modules:

118,71 kg



#### Gwarancja / Guarantee :

10 lat / 10 years



#### Kąt nachylenia systemu Angle of the system:

25°, 30°



#### Montaż / Installation:

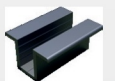
Wbijanie w grunt  
Rammed into the ground

### Dodatki / Accessories:

Klemy końcowe czarne  
Black end clamps



Klemy środkowe czarne  
Black middle clamps



# Magnelis®