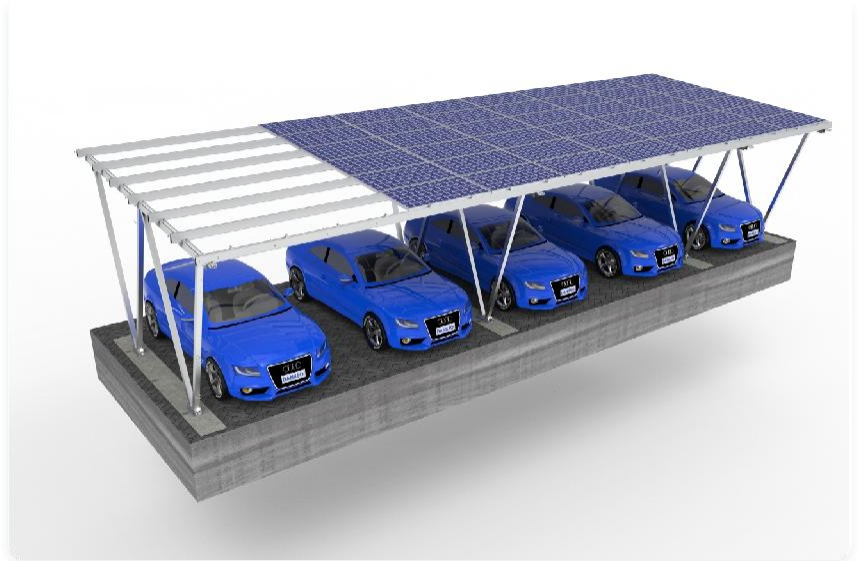


Aluminum Carport

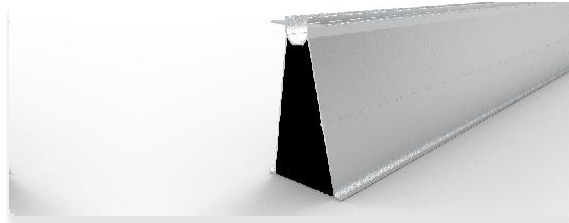
The aluminum carport is suitable for different concrete floors. It is characterized by light weight, firm structure, and recyclable materials. and it can be directly unfolded during installation and can be installed with Rail components.

Parameter

- Wind Load: 60M/S
- Snow Load: : 3KN/M²
- Installation Angle Deviation:±2°
- Installation Site:Ground
- Main Material:AL6005-T5
- Fastener Material:SUS304
- PV Module:Framed/Unframed
- Technical Standard : Japan JIS C8955:2017
- Warranty:10 Years



15.Aluminum Solar Carport



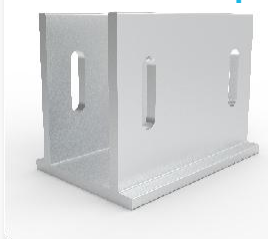
Rail



End Clamp



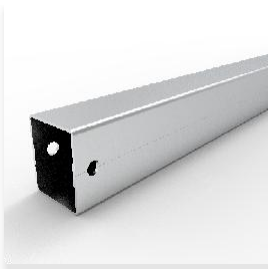
Mid Clamp



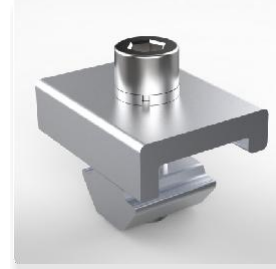
Base



Rail



Column



Block