



Monocrystalline Photovoltaic Module

# MEPV 144 HALF-CUT PLUS

BLACK - STANDARD - BICOLOUR

450 / 460 Wp

### QUALITY



**Reduced BOS**  
Cost effective product



**+21%**  
**Efficiency**  
460Wp module



**+5W**  
Positive power tolerance



**FIRE CLASS I**  
UNI 9177  
**Fire resistance**  
Maximum protection



**Avoid losses**  
Better shading tolerance



**5400 Pa**  
**2400 Pa**  
**Load endurance**  
Front load / Back load

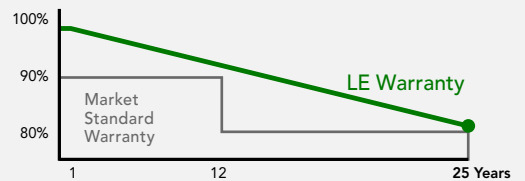


\*\*\* EUROPEAN QUALITY \*\*\*

### WARRANTIES

**20 YEARS PRODUCT WARRANTY**  
+5 years for Premium Partners

**25 YEARS PERFORMANCE WARRANTY**  
Linear Warranty



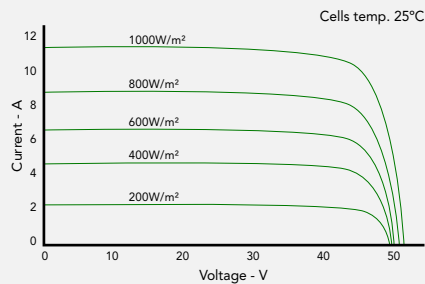
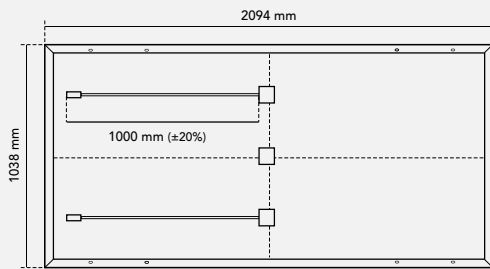
### CERTIFICATES





## TECHNICAL FEATURES

### LEPV 14 HALF-CUT PLUS 450Wp-460Wp



#### FRAME

Black / Silver anodized aluminium

Robust and resistant to corrosion

#### JUNCTION BOX

Sealed, robust and wide for heat dissipation

IP67/IP68 according to IEC 60529

Diodes by-pass built-in 3

Connector MC4 compatible

Cables 1000 mm (±20%) length and 4 mm<sup>2</sup> section

#### FRONTAL

3,2 mm thick tempered glass with high strength and ARC

Textured, extra-clear with low iron content

Frontal load (snow) 5400 Pa | Back load (wind) 2400 Pa

#### SOLAR CELLS

144 [2x(12x6)] cells monocrystalline silicon

#### WEIGHT AND DIMENSIONS

25 Kg | 2094 x 1038 x 35 mm (±1%) | Pack: 726 pcs-truck

## ELECTRIC DATA

BLACK - STANDARD - BICOLOUR	LEPV 450	LEPV 460
STC: 1000 W/m <sup>2</sup> , module temperature 25°C, AM 1,5		
Nominal power. Pmax	450 Wp	460 Wp
Max. power tolerance. Pmax	0 / +5 W	0 / +5 W
Area of the module	2,17 m <sup>2</sup>	
Module efficiency	20,72 %	21,19 %
Isc	11,50 A	11,66 A
Voc	49,98 V	50,38 V
Imp	10,89 A	11,03 A
Vmp	41,36 V	41,76 V
NOCT: 800 W/m <sup>2</sup> , ambient temperature 20°C, AM 1,5		
Nominal power. Pmax	338,64 W	349,78 W
Isc	9,26 A	9,37 A
Voc	47,18 V	47,52 V
Imp	8,71 A	8,88 A
Vmp	38,88 V	39,39 V
Operating parameters. Temperature coefficients		
Maximum voltage	1000 - 1500 V	
Maximum series fuse rating. Ir	20 A	
α Isc	0,046 % / °C	
β Voc	- 0,276 % / °C	
γ Pmax	- 0,381 % / °C	
Temperature range	- 40°C ~ + 85 °C	
NOCT	42 ± 2 °C	

NOTE: Read the instruction manual of this product and follow the indications STC. Values are valid for: 1000W/m<sup>2</sup>, AM 1,5 and cells temperature of 25°C. Measurement tolerance +/-3% (AAA Solar simulation -IEC 60.904-9-). All the information of this brochure may be amended without notice by Lina Energy