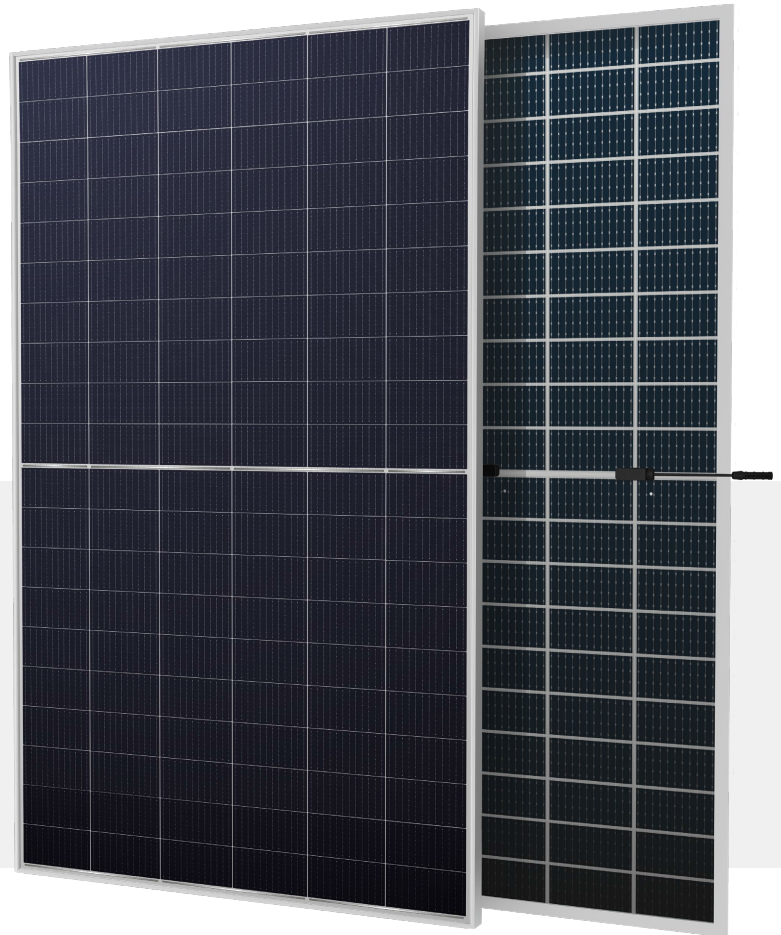


BIFACIAL MODULE WITH DUAL GLASS

RS8-620~640HBG-E1

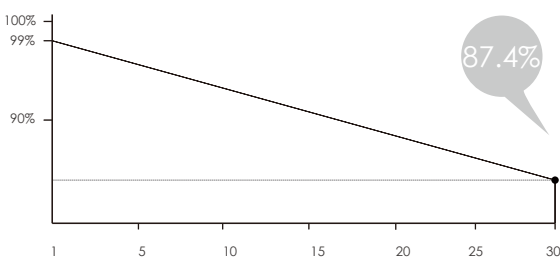
HJT-Type /Positive power tolerance of 0~+3%/Max module efficiency 22.61%

- Advanced 210HJT cell and 24BB module technology leads to higher efficiency;
- N-type solar cell has no LID naturally, can increase power generation
 - Excellent cell color control ·Non destructive cutting ·Thinner wafer
- Excellent power generation performance
 - Excellent IAM and Weak light response ·Low temperature ratings
 - 0.40% linear Power decline
- Flexible for system deployment
 - Perfect size and low weight ·Diverse installation solutions. ·Leads to avoid fire
- Ultra-hydrophilic self-cleaning coating techniques

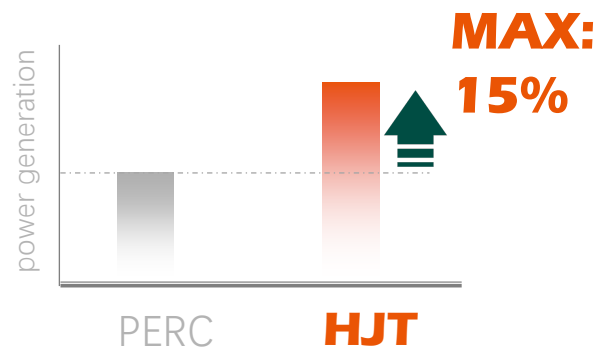


Complete System
and IEC Product Certification

IEC 61215(2016), IEC 61730(2016) ISO9001:
2015:Quality Management System ISO14001:
2015:Environment Management System
ISO45001:2018:Occupational Health
and Safety Management System

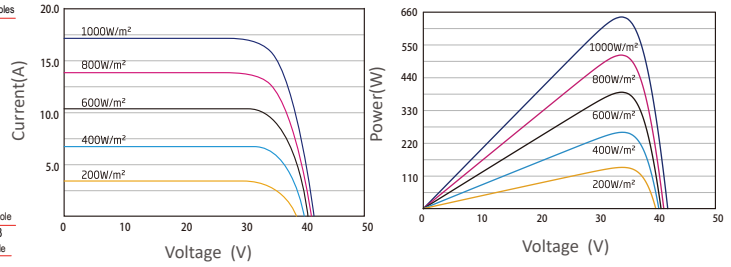
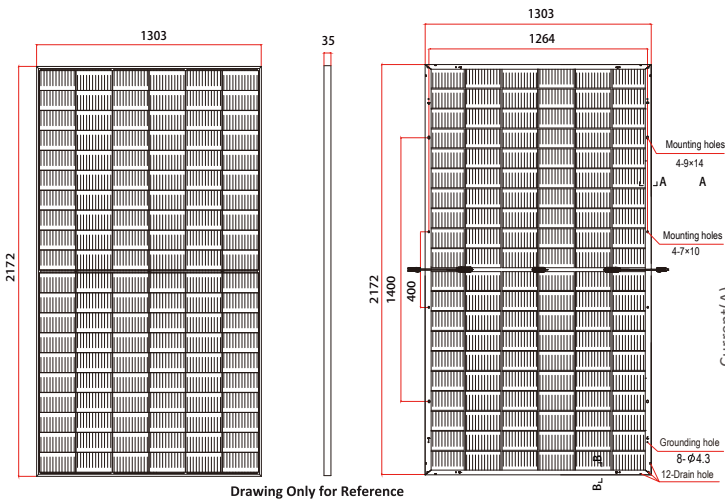


30-Year excess linear power output warranty



RS8-620~640HBG-E1

BIFACIAL MODULE WITH DUAL GLASS



Electrical Characteristics STC	RS8-620HBG-E1	RS8-625HBG-E1	RS8-630HBG-E1	RS8-635HBG-E1	RS8-640HBG-E1
Maximum Power (Pmax)	620W	625W	630W	635W	640W
Power Tolerance	0~+5W	0~+5W	0~+5W	0~+5W	0~+5W
Module Efficiency	21.91%	22.08%	22.26%	22.44%	22.61%
Maximum Power Current (Imp)	16.13A	16.17A	16.21A	16.25A	16.29A
Maximum Power Voltage (Vmp)	38.44V	38.66V	38.87V	39.08V	39.29V
Short Circuit Current (Isc)	17.14A	17.17A	17.20A	17.23A	17.26A
Open Circuit Voltage (Voc)	44.90V	45.09V	45.27V	45.45V	45.63V

Values at Standard Test Conditions STC(AM1.5, Irradiance 1000W/m², Cell Temperature 25°C)

Electrical Characteristics NOCT	RS8-620HBG-E1	RS8-625HBG-E1	RS8-630HBG-E1	RS8-635HBG-E1	RS8-640HBG-E1
Maximum Power (Pmax)	496W	500W	504W	507W	511W
Maximum Power Current (Imp)	13.12A	13.15A	13.17A	13.19A	13.21A
Maximum Power Voltage (Vmp)	37.80V	38.10V	38.30V	38.50V	38.70V
Short Circuit Current (Isc)	13.71A	13.74A	13.76A	13.78A	13.81A
Open Circuit Voltage (Voc)	44.50V	44.70V	44.90V	45.10V	45.30V

NOCT , Irradiance of 800W/m², AM1.5, Ambient Temperature 20 °C, wind Speed 1m/s.

Mechanical Characteristics

Cell Type	MonoHJT-Type,210x210(±1)mm,120(6x20)Half-Cut cells
Glass	2mm, Double AR Coated Heat Strengthened Glass
Frame	Anodized Aluminum Alloy
Junction Box	IP68 Rated, With Bypass Diodes
Dimension	2172×1303×35mm
Output Cable	4 mm ² (EU),300 mm,length can be customized
Weight	35.3kg
Installation Hole Location	See Drawing Above

Characteristics

Temperature Coefficient of Voc	-0.22%/°C
Temperature Coefficient of Isc	+0.047%/°C
Temperature Coefficient of Pmax	-0.24%/°C
Nominal Operating Cell Temperature (NOCT)	43°C±2°C

Remark:Electrical data in this catalog do not refer to a single module and they are not part of the offer.They only serve for comparison among different module types.

Packing Information

Container	40' HQ
Pallets per Container	18
Pieces per Container	558

Maximum Ratings

Operating Temperature	-40°C~+85°C
Maximum System Voltage	1500VDC
Maximum Series Fuse Rating	30A



Note: Please read the safety and installation instructions before using this product
 ©2022 Renesola Co.,Ltd. All rights reserved. subject to change without notice.
 web: www.renesola-energy.com
 Version number:RS-T8-039-A

