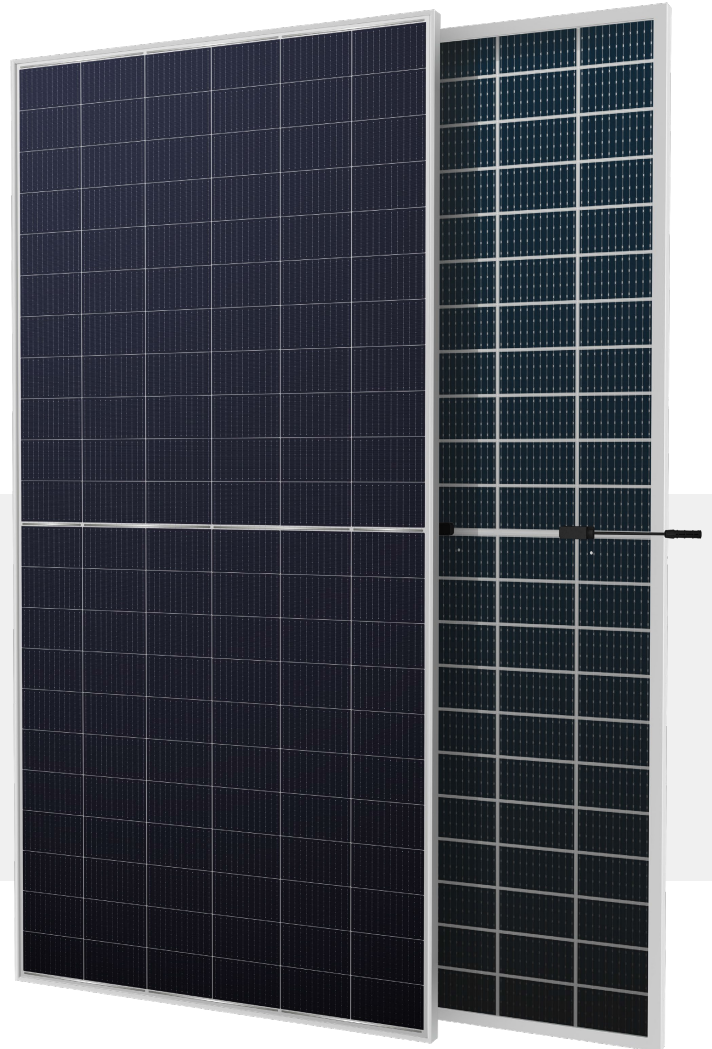


## BIFACIAL MODULE WITH DUAL GLASS

# RS9-685~705HBG-E1

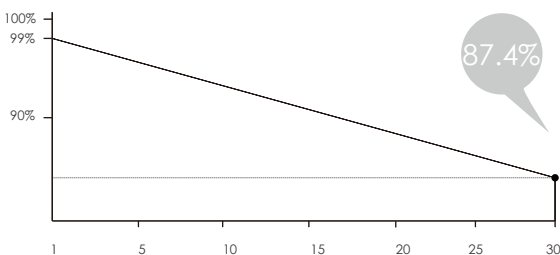
HJT-Type /Positive power tolerance of 0~+3%/Max module efficiency 22.70%

- Advanced 210HJT cell and 24BB module technology leads to higher efficiency;
- N-type solar cell has no LID naturally, can increase power generation
  - Excellent cell color control ·Non destructive cutting ·Thinner wafer
- Excellent power generation performance
  - Excellent IAM and low irradiation performance ·Lower temperature coefficient
  - 0.40% linear Power decline
- Flexible for system deployment
  - Perfect size and low weight ·Diverse installation solutions. ·Leads to avoid fire
- Ultra-hydrophilic self-cleaning coating techniques

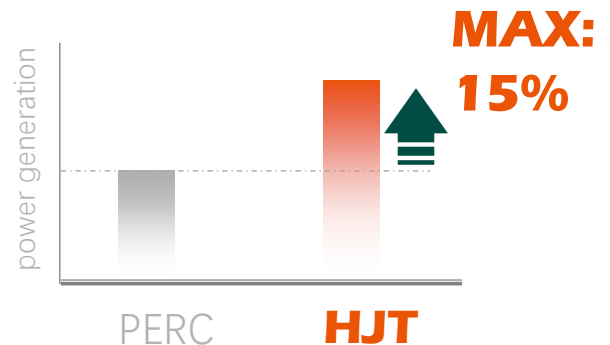


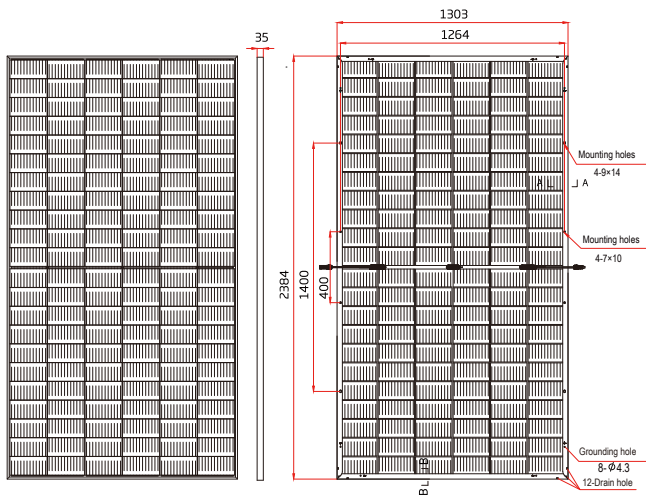
Complete System  
and IEC Product Certification

IEC 61215(2016), IEC 61730(2016) ISO9001:  
2015:Quality Management System ISO14001:  
2015:Environment Management System  
ISO45001:2018:Occupational Health  
and Safety Management System



30-Year excess linear power output warranty

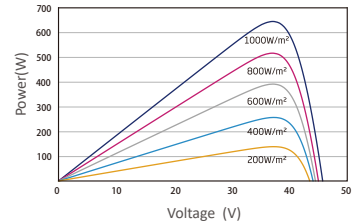
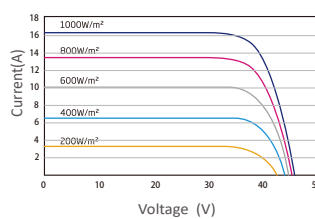




Drawing Only for Reference

# RS9-685~705HBG-E1

## BIFACIAL MODULE WITH DUAL GLASS



Electrical Characteristics STC	RS9-685HBG-E1	RS9-690HBG-E1	RS9-695HBG-E1	RS9-700HBG-E1	RS9-705HBG-E1
Maximum Power (Pmax)	685W	690W	695W	700W	705W
Power Tolerance	0~+5W	0~+5W	0~+5W	0~+5W	0~+5W
Module Efficiency	22.05%	22.21%	22.37%	22.53%	22.70%
Maximum Power Current (Imp)	16.11A	16.15A	16.19A	16.23A	16.27A
Maximum Power Voltage (Vmp)	42.53V	42.73V	42.93V	43.14V	43.33V
Short Circuit Current (Isc)	17.14A	17.17A	17.20A	17.24A	17.27A
Open Circuit Voltage (Voc)	49.59V	49.79V	49.99V	50.19V	50.39V

Values at Standard Test Conditions STC(AM1.5, Irradiance 1000W/m<sup>2</sup>, Cell Temperature 25°C)

Electrical Characteristics NOCT	RS9-685HBG-E1	RS9-690HBG-E1	RS9-695HBG-E1	RS9-700HBG-E1	RS9-700HBG-E1
Maximum Power (Pmax)	524W	528W	532W	536W	540W
Maximum Power Current (Imp)	12.87A	12.90A	12.93A	12.96A	12.99A
Maximum Power Voltage (Vmp)	40.80V	41.00V	41.20V	41.40V	41.60V
Short Circuit Current (Isc)	13.83A	13.85A	13.88A	13.91A	13.94A
Open Circuit Voltage (Voc)	47.60V	47.80V	48.00V	48.20V	48.40V

NOCT , Irradiance of 800W/m<sup>2</sup> AM1.5, Ambient Temperature 20 °C, wind Speed 1m/s.

### Mechanical Characteristics

Cell Type	Mono HJT-Type, 210x210(±1)mm, 132(6x22) Half-Cut cells
Glass	2mm+2mm, High Transmission, Low Iron, Tempered Glass
Frame	Anodized Aluminum Alloy
Junction Box	1P68 Rated
Dimension	2384×1303×35mm
Output Cable	4 mm2 (EU),300 mm,length can be customized
Weight	38.7kg
Connector	MC4 compatible

### Characteristics

Temperature Coefficient of Voc	-0.22%/°C
Temperature Coefficient of Isc	+0.047%/°C
Temperature Coefficient of Pmax	-0.24%/°C
Nominal Operating Cell Temperature (NOCT)	43°C ± 2°C

Remark:Electrical data in this catalog do not refer to a single module and they are not part of the offer.They only serve for comparison among different module types.

### Packing Information

Container	40' HQ
Pallets per Container	18
Pieces per Container	558

### Maximum Ratings

Operating Temperature	-40°C~+85°C
Maximum System Voltage	1500VDC
Maximum Series Fuse Rating	35A



Note: Please read the safety and installation instructions before using this product  
 ©2022 Renesola Co.,Ltd. All rights reserved. subject to change without notice.  
 web: www.renesola-energy.com  
 Version number:RS-T9-083-A

