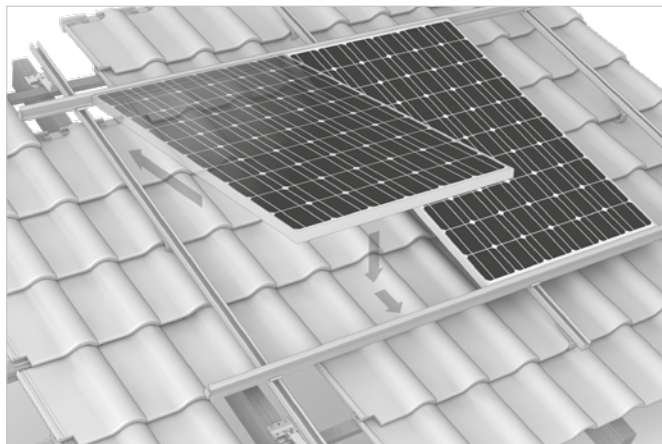




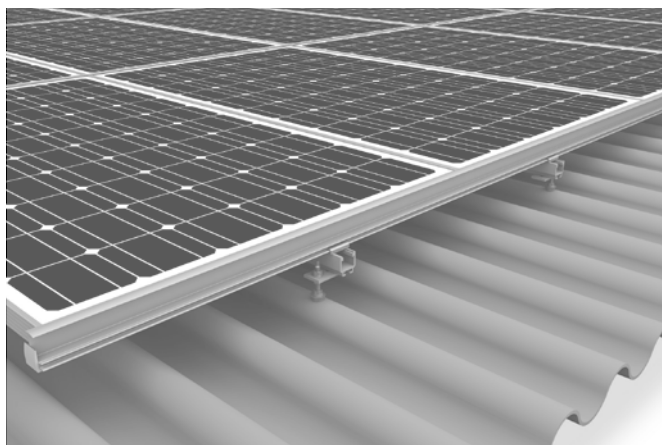
K2 Insertion system

For a shapely overall appearance without disturbing module clamps. The closed surface forms an attractive roof construction without gaps or additional edges. Lightning-fast installation of the modules without screws, module clamps or assistance.



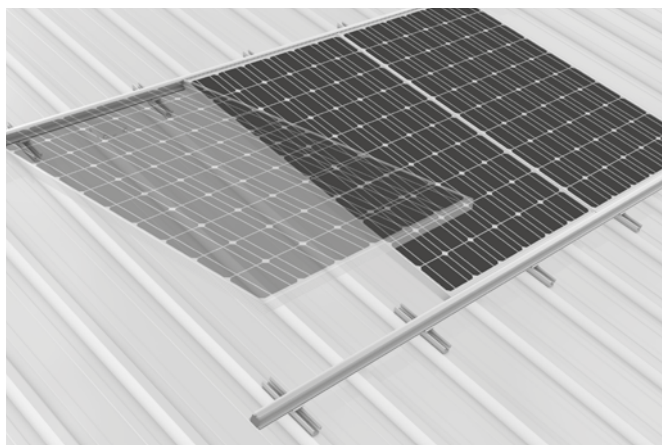
Roof tiles and slate

- Roof hooks for majority of clay tiles, pantiles and concrete tiles as well as roofing tiles
- Simple height adjustment on base plate or bracket
- 80% of all applications can be solved with SolidHook 3S+ or 4S+ solvable



Corrugated fibre cement and corrugated sheet metal

- For all corrugated fibre cement and corrugated sheet metal roofing with wooden substructure
- Climber connection possible
- abZ (general technical approval) in Germany
- Further connection with MultiRail CSM on corrugated sheet metal possible



Trapezoidal sheet metal

- Connection with MultiRail mounting rail
- Simple assembly and quick planning with few components



Further information,
**all technical data and
components**