

# Hybrid Solar Inverter HSI Series



### Stable & Durable

latest toroidal transformer could handle triple surge power  
Inbuilt AVR stabilizer for stable output



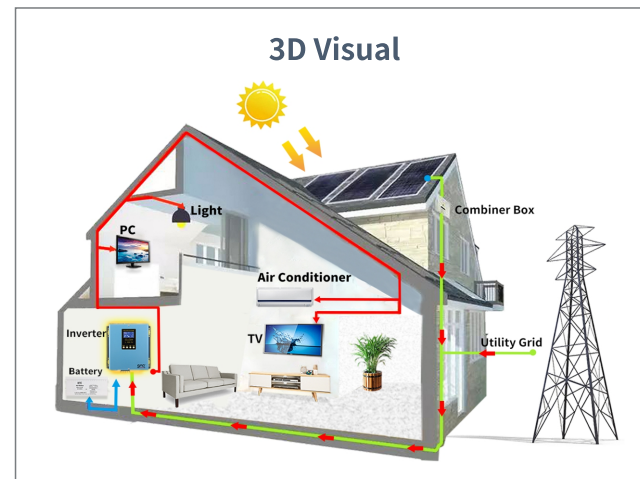
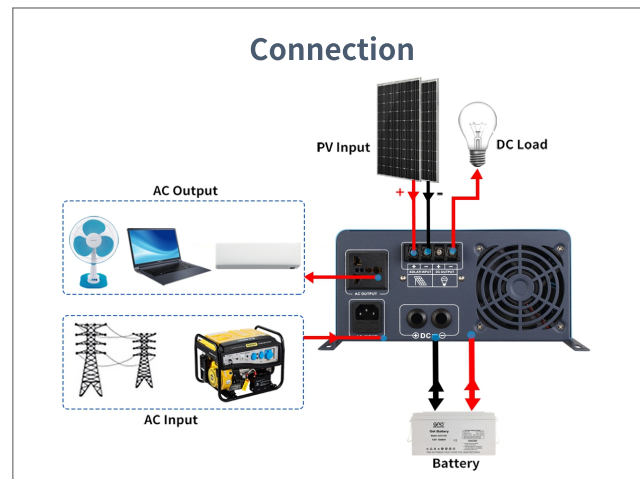
### High Efficiency

Inverter transfer efficiency up to 85%  
Inbuilt 15A AC charger +20/30A PWM solar charger



### Battery Type

Support SLA/GEL/AGM battery



## Technical Specification

Model	HSI-351	HSI-501	HSI-601	HSI-801	HSI-102	HSI-122
Rated power	350W	500W	600W	800W	1000W	1200W
Surge power	1050W	1500W	1800W	2400W	3000W	3600W
AC Input & Output						
Voltage	220VAC					
Selectable Voltage Range	165-275VAC (220VAC)					
Frequency Range	50Hz/60Hz automatic recognition					
AC Voltage Regulation (BATT. Mode)	(DC Batt.mode)220vac ±3%					
Transfer Time	≤8ms					
Wave Form	Pure Sine Wave					
Transformer type	Toroidal					
Transfer efficiency	≥85%					
Battery						
Battery Voltage	12V				12V/24V	
Type	Gel/SLA/AGM/Water battery					
DC Charge Voltage	13.8VDC(12V)/27.6VDC(24V)					
Overcharge Protection	Battery voltage ≥16VDC (12V) ≥32VDC (24V), stop charging after 60s alarm					
Solar Charge & Ac Charger						
Maximum PVArray Open Circuit Voltage	Max. 30V(12V) / 50V (24V)					
Maximum Pv Array Power	450W(12V)/900W(24V)					
Maximum Ac Charge Current	15A					
Maximum Solar Charge Current	20A PWM				30A PWM	
Maximum Charging Current	35A				45A	
Working mode						
01 mode	AC mains priority					
02 mode	ECO mode					
03 mode	DC battery priority					
Physical						
Dimension, D*W*H(MM)	345*315*195					
G.W.(KGS)	11					
Environment						
Humidity	0~95% ( NO CONDESNSATION)					
Operating Temperature	0~60°C					
Storage Temperature	0~60°C					

\*Product Specifications Are Subject To Change Without Further Notice