



Polycrystalline Photovoltaic Module

LPEPV 60 SUPERIOR

STANDARD - BICOLOUR »

280 / 285 Wp

QUALITY



60 cells
Polycrystalline



Long durability
Continuous performance



+5W
Positive power tolerance



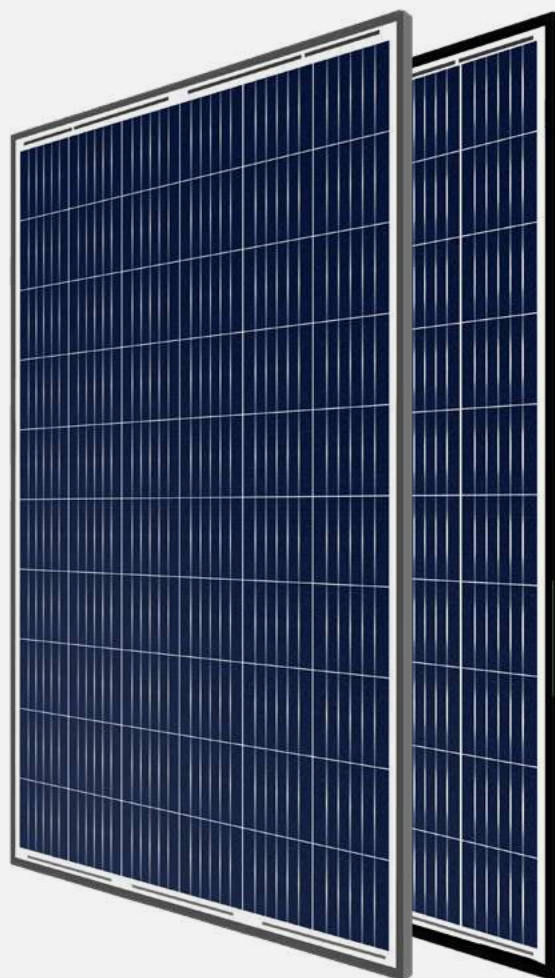
Fire resistance
Maximum protection



Proven technology
More reliable



Optimal performance
Power and efficiency

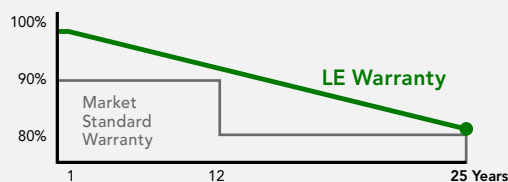


*** EUROPEAN QUALITY ***

WARRANTIES

20 YEARS PRODUCT WARRANTY
+5 years for Premium Partners

25 YEARS PERFORMANCE WARRANTY
Linear Warranty



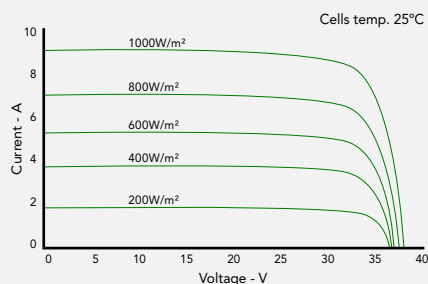
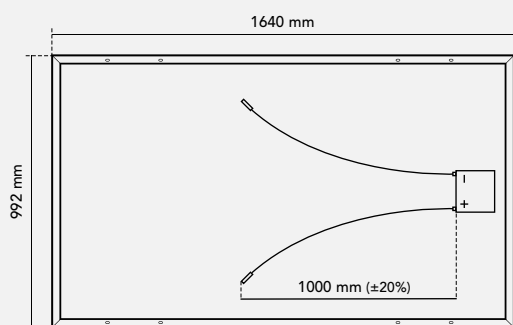
CERTIFICATES





TECHNICAL FEATURES

LEPV 60 SUPERIOR 280Wp - 285Wp



FRAME

Black / Silver anodized aluminium

Robust and resistant to corrosion

JUNCTION BOX

Sealed, robust and wide for heat dissipation

IP67/IP68 according to IEC 60529

Diodes by-pass built-in 3

Connector MC4 compatible

Cables 1000 mm (±20%) length and 4 mm² section

FRONTAL

3,2 mm thick tempered glass with high strength and ARC

Textured, extra-clear with low iron content

Frontal load (snow) 5400 Pa | Back load (wind) 2400 Pa

SOLAR CELLS

60 cells polycrystalline silicon

WEIGHT AND DIMENSIONS

18,50 Kg | 1640 x 992 x 35 mm (±1%) | Pack: 924 pcs-truck

ELECTRIC DATA

STANDARD - BICOLOUR	LPEPV 280	LPEPV 285
STC: 1000 W/m², module temperature 25°C, AM 1,5		
Nominal power. P _{max}	280 W _p	285 W _p
Max. power tolerance. P _{max}	0 / +5 W	0 / +5 W
Area of the module	1,62 m ²	
Module efficiency	17,22 %	17,52 %
I _{sc}	9,40 A	9,49 A
V _{oc}	38,20 V	38,30 V
I _{mp}	8,92 A	9,02 A
V _{mp}	31,40 V	31,60 V
NOCT: 800 W/m², ambient temperature 20°C, AM 1,5		
Nominal power. P _{max}	211,11 W	214,83 W
I _{sc}	7,59 A	7,66 A
V _{oc}	36,12 V	36,21 V
I _{mp}	7,20 A	7,28 A
V _{mp}	29,32 V	29,51 V
Operating parameters. Temperature coefficients		
Maximum voltage	1000 - 1500 V	
Maximum series fuse rating. I _r	15 A	
α I _{sc}	0,051 % / °C	
β V _{oc}	- 0,321 % / °C	
γ P _{max}	- 0,41 % / °C	
Temperature range	- 40°C ~ + 85 °C	
NOCT	42 ± 2 °C	

NOTE: Read the instruction manual of this product and follow the indications STC. Values are valid for: 1000W/m², AM 1,5 and cells temperature of 25°C. Measurement tolerance +/-3% (AAA Solar simulation -IEC 60.904-9-). All the information of this brochure may be amended without notice by Lina Energy.