

Hybrid Solar Inverter HSI PLUS Series



Intelligent Control

Five smart control mode, auto switch for different demand
RS485 communicational portal, for app & external screen control



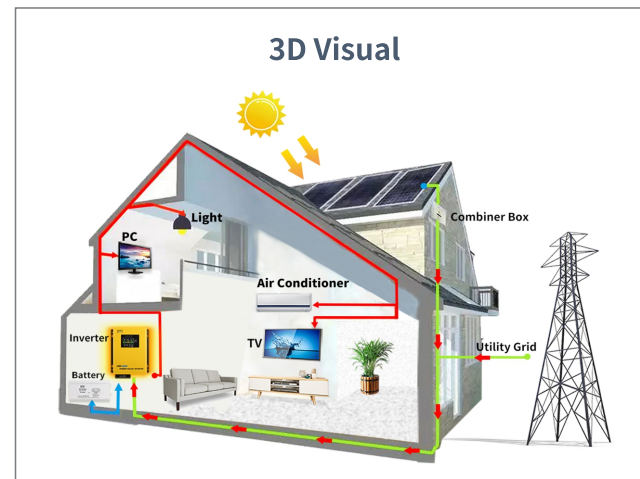
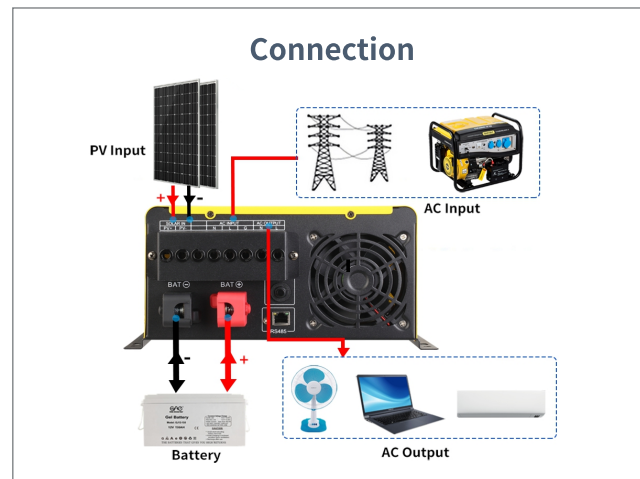
High Efficiency

Inverter transfer efficiency up to 85%
Inbuilt 15A AC charger & 30/40A MPPT efficiency more than 99%



Battery Type

Support SLA/GEL/AGM/lithium lifepo4 battery



Technical Specification

Model	HSI-PLUS-102	HSI-PLUS-122
Rated power	1000W	1200W
Surge power	3000W	3600W
AC Input & Output		
Voltage	220VAC	
Selectable Voltage Range	165-275VAC	
Frequency Range	50Hz/60Hz automatic recognition	
AC Voltage Regulation (BATT. Mode)	(DC Batt.mode)220vac ±3%	
Transfer Time	≤5ms	
Wave Form	Pure Sine Wave	
Transformer type	Toroidal	
Transfer efficiency	≥85%	
Battery		
Battery Voltage	12V/24V	
Type	Gel/SLA/AGM/Water/Lithium(lifepo4) Battery	
DC Charge Voltage	12~16VDC(12V)/24~32VDC(24V)	
Overcharge Protection	Battery voltage ≥16VDC (12V) ≥32VDC (24V), stop charging after 60s alarm	
Solar Charge & Ac Charger		
Maximum PVArray Open Circuit Voltage	Max. 100V	
Maximum Pv Array Power	450W(12V)/900W(24V)	600W(12V)/1200W(24V)
Maximum Ac Charge Current	15A	
Maximum Solar Charge Current	30A MPPT	40A MPPT
Maximum Charging Current	45A	55A
Working mode		
01 mode	AC mains priority	
02 mode	ECO mode	
03 mode	DC battery priority	
04 mode	Unattended mode	
Communication Port		
Type	RS485, available for wifi box & external control screen	
Physical		
Dimension, D*W*H(MM)	460*339*210	
G.W.(KGS)	11	
Environment		
Humidity	0~95% (NO CONDESNSATION)	
Operating Temperature	0~55°C	
Storage Temperature	0~55°C	

*Product Specifications Are Subject To Change Without Further Notice