



### Uniquely shaped for flat roofs.

IronRidge BX delivers superior power density and design flexibility to flat roof solar arrays. Made of a glass-reinforced composite, the BX Chassis is engineered for extreme structural loading, yet is also shaped to be roof-friendly and easy to install.

Certified BX plan sets can be obtained instantly through an online Design Assistant or by contacting IronRidge Commercial Services.



#### **Glass-Reinforced Composite**

Corrosion-free and engineered for long-term structural performance.



#### **Commercial Services**

Engineering support to optimize system design.



#### **Class A Fire Rating**

Certified to maintain the fire resistance rating of the existing roof.



#### **Design Assistant**

Online software makes it simple to create, share, and price projects.



#### **UL 2703 & 3741 Listed**

Entire system and components meet the latest UL safety standards.



#### **25-Year Warranty**

Products guaranteed to be free of impairing defects.

## Chassis

### 5° Chassis



Ballasted mounting for 5 degree tilt angle.

- Max load spreading design
- Fully encloses ballast
- 360 degree drainage

### 10° Chassis



Ballasted mounting for 10 degree tilt angle.

- Max load spreading design
- Fully encloses ballast
- 360 degree drainage

### Top Clamp



Combines with Bottom Clamp for top-bottom module grip.

- Secures above module
- One-tool attachment
- Mill aluminum 6000 series

### Bottom Clamp



Combines with Top Clamp to up structural connection.

- Secures below module
- One-tool attachment
- Mill aluminum 6000 series

## Grounding

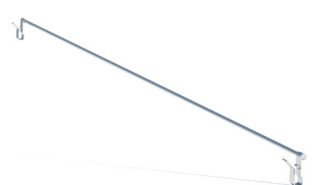
### 8" Mod Bonding Jumper



Bond adjacent modules in the array.

- Press-on installation
- Tin-plate copper wire
- Factory crimped connection

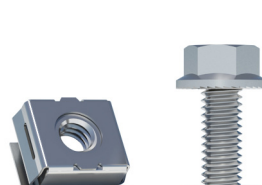
### 38" Row Bonding Jumper



Complete row-to-row bonding in the array.

- Press-on installation
- Tin-plate copper wire
- Factory crimped connection

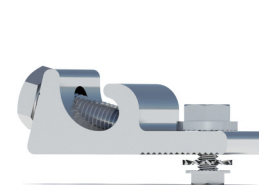
### MLPE Mounting Hardware



Optional mounting hardware for MLPE devices.

- Cap screw and cage nut
- 5/16" socket install
- Stainless steel 300 series

### PV Mod Grounding Lug



Connect arrays to equipment ground.

- Low profile
- Mounts to module frame
- One per continuous array

## Accessories

### Accessory Frame Bracket



Mount MLPE devices directly to module frame.

- Fits any module frame
- Mill aluminum finish
- UL 2703 listed

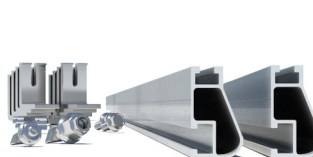
### Cable & Edge Ties



Complete wire management with weatherproof ties.

- 12" length, bundles of 100
- UV stabilized polyamide
- Black finish

### String Inverter Mount Kit



Create mounting platform for inverters.

- Chassis, XR10 rail, hdw
- Up to 4' inverter base
- Raises inverter off deck

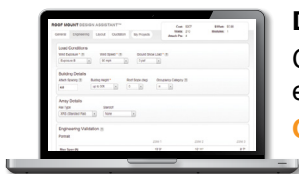
### Flat Roof Attachment Kit



Add anchors to ballasted system.

- Includes hardware
- For ballast-attached hybrid
- Uses locally-sourced strut

## Resources



### Design Assistant

Go from rough layout to fully engineered system in minutes.

[Go to IronRidge.com](http://Go to IronRidge.com)



### Chassis Display #7 Recycle Label

Like most glass-filled nylons, it is 100% recyclable—usually living on in furniture.

[Find more info at epa.gov/recycle](http://Find more info at epa.gov/recycle)