

# Solstice<sup>®</sup> Panel

## HALF-CELL 400W SOLAR MODULE

High performance, half-cell mono-crystalline 10BB 400W all-black modules produced using state of the art automated production lines and made using the highest quality materials and quality control standards.

### HALF-CELL MONOCRYSTALLINE TYPE

• CTM10400HC11-08

### FEATURES AND BENEFITS

#### High Quality / High Power

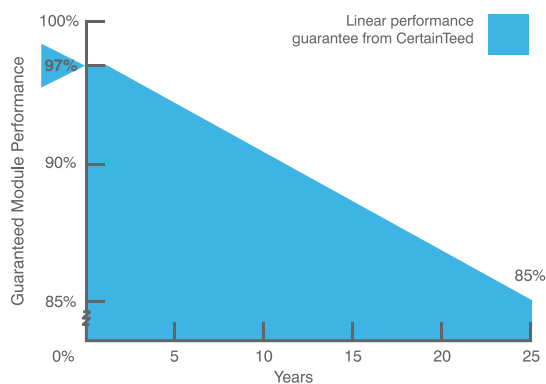
- 400W with black grid backsheet
- UL listed (61730-1, UL 61730-2)
- Positive power output tolerance

#### Limited Warranty\*

- 25-year linear power output warranty

\*See CertainTeed's limited warranty for details

### POWER OUTPUT WARRANTY



### OPERATING CONDITIONS

Dimensions	1721 x 1133 x 35 mm
Nominal Operating Cell Temperature	45 +/- 2° C
Operating Temperature	-40 to 85° C
Maximum System Voltage	1,500V
Fire Performance	Class C / Type 1
Maximum Wind Load	112 lbs/ft <sup>2</sup> (5400 Pa)
Maximum Snow Load	112 lbs/ft <sup>2</sup> (5400 Pa)

## ELECTRICAL CHARACTERISTICS

Nominal Output (Pmpp)	W	400
Voltage at Pmax (Vmpp)	V	31.00
Current at Pmax (Impp)	A	12.92
Open Circuit Voltage (Voc)	V	37.15
Short Circuit Current (Isc)	A	13.55
Output Tolerance	W	-0 / + 5
No. of Cells & Connections		108 half-cells with 3 bypass diodes
Maximum Series Fuse Rating		25A
Cell Type		Monocrystalline
Module Efficiency	%	20.5
Temperature Coefficient of Pmpp	%/C	-0.35
Temperature Coefficient of Voc	%/C	-0.22
Temperature Coefficient of Isc	%/C	+0.05

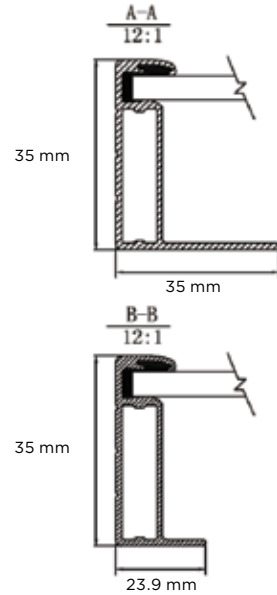
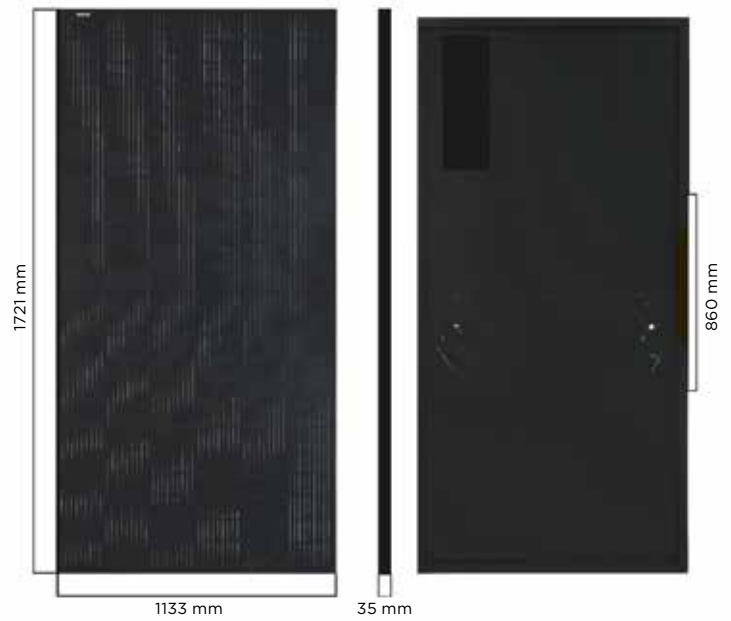
## MECHANICAL CHARACTERISTICS

Glass	Glass: 3.2 high transmission, tempered
Frame	Anodized aluminum (Black)
Junction Box	IP68
Output Cables	4 mm <sup>2</sup> (12AWG) PV Wire, Length 1.2m (47.2")
Connectors	Polarized MC compatible
Weight	45.9 lbs (20.8 kg)

## PACKAGING

Panels Per Pallet	31
Panels Per Container	806

## DIMENSIONS



### CertainTeed

CEILING • DECKING • FENCE • GYPSUM • INSULATION • RAILING • ROOFING • SIDING • TRIM  
 20 Moores Road, Malvern, PA 19355 Professional: 800-233-8990 Consumer: 800-782-8777 [certainteeted.com](http://certainteeted.com)