

CBG26-12

12V 26AH

Deep Cycle Gel Battery



CBG26-12



Physical Specification

Part Number:	CBG26-12
Length:	166 ± 2 mm (6.54 inches)
Width: Container	175 ± 2 mm (6.89 inches)
Height:	125 ± 2 mm (4.92 inches)
Total Height (with terminal):	125 ± 2 mm (4.92 inches)
Approx Weight:	8.5 kg (18.7 lbs)

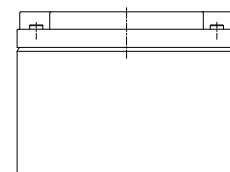
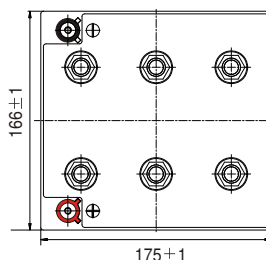
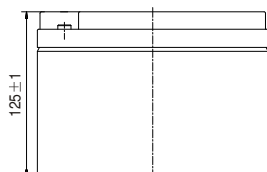
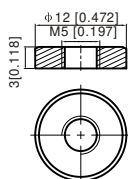
Specifications

	Nominal Voltage	12V	
	(C10, 1.80V/cell)	26AH	
Terminal Option	T12		
Container Material	Standard Option	ABS	
	Flame Retardant Option (FR)	ABS (UL94:VO)	
Rated Capacity	(20hr, 1.30A, 1.80V/cell)	26.0 Ah	
	(10hr, 2.42A, 1.75V/cell)	24.2 Ah	
	(5hr, 4.16A, 1.75V/cell)	20.8 Ah	
	(3hr, 6.03A, 1.75V/cell)	18.1 Ah	
	(1hr, 14.3A, 1.67V/cell)	14.3 Ah	
Max Discharge Current (5s)	312 A		
Internal Resistance	Approx. 13.5mΩ		
Discharge Characteristics	Operating Temp. Range	Discharge: -20°C~55°C (-4°F~131°F)	
		Charge: 0°C~40°C (32°F~104°F)	
		Storage: -20°C~50°C (5°F~122°F)	
	Nominal Operating Temp. Range	25 ± 3°C (77 ± 5°F)	
	Cycle Use	Initial Charging Current less than 6.5A. Voltage 14.4V~15.0V at 25°C (77°F) Temp. Coefficient -30mV°C	
	Standby Use	No limit on Initial Charging Current Voltage 13.5V~13.8V at 25°C (77°F) Temp. Coefficient -20mV°C	
	Capacity affected by Temperature	40°C (104°F)	103%
		25°C (77°F)	100%
0°C (32°F)		86%	
Design Floating Life at 20°C	20 Years		
Self Discharge	Canbat Deep Cycle Gel batteries may be stored for up to 9 months at 25°C (77°F) and then a refresh charge is required. For higher temperatures the time interval will be shorter. Self-discharge is less than 2%		

Dimensions

T12 Terminal

Unit: mm [inches]



To ensure safe and efficient operation always refer to the latest edition of our datasheets, as published on our website www.canbat.com. Canbat Technologies Inc. All rights reserved. All trademarks are the property of their respective owners. All data subject to change without notice. E&O.E

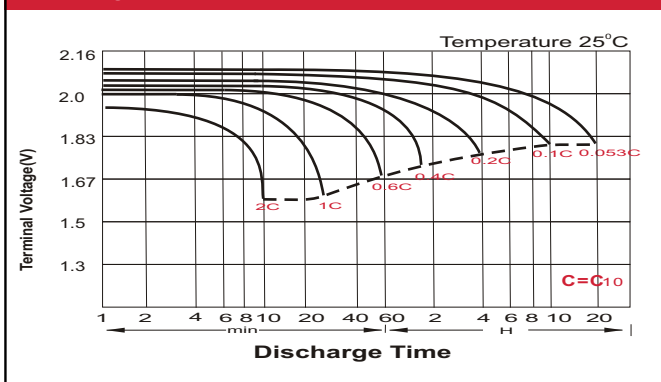
Constant Current Discharge (Amperes) at 25 °C (77°F)

F.V/Time	20min	30min	45min	1h	2h	3h	4h	5h	6h	7h	8h	9h	10h	20h
1.85V/cell	22.0	17.3	13.2	11.0	6.99	5.33	4.41	3.81	3.29	2.91	2.63	2.40	2.27	1.25
1.80V/cell	25.2	19.3	14.5	12.2	7.57	5.71	4.68	4.00	3.45	3.05	2.75	2.52	2.37	1.30
1.75V/cell	28.3	21.2	15.7	13.0	8.02	6.03	4.90	4.16	3.58	3.16	2.84	2.60	2.42	1.33
1.70V/cell	30.5	22.7	16.7	13.8	8.50	6.28	5.06	4.29	3.70	3.26	2.93	2.67	2.48	1.34
1.67V/cell	31.7	23.6	17.3	14.3	8.72	6.48	5.19	4.38	3.76	3.31	2.97	2.70	2.50	1.36
1.60V/cell	34.4	25.3	18.5	15.2	9.07	6.74	5.38	4.51	3.85	3.38	3.02	2.76	2.55	1.38

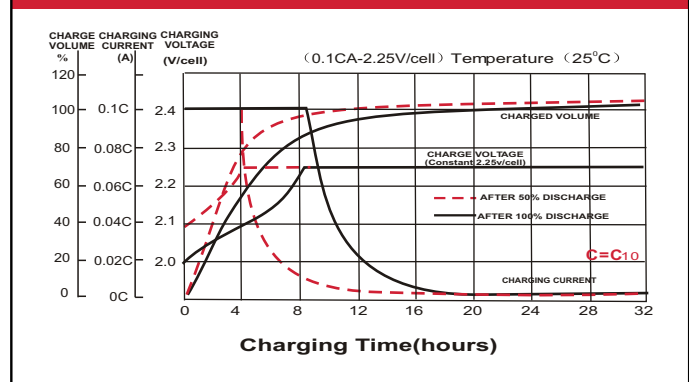
Constant Power Discharge (Watts/cell) at 25 °C (77°F)

F.V/Time	20min	30min	45min	1h	2h	3h	4h	5h	6h	7h	8h	9h	10h	20h
1.85V/cell	42.1	33.3	25.5	21.5	13.7	10.4	8.68	7.52	6.52	5.78	5.23	4.78	4.53	2.49
1.80V/cell	47.6	36.8	28.0	23.6	14.7	11.1	9.17	7.88	6.82	6.03	5.46	5.02	4.72	2.59
1.75V/cell	52.9	40.1	30.0	25.1	15.6	11.8	9.57	8.16	7.04	6.23	5.62	5.16	4.81	2.64
1.70V/cell	56.4	42.6	31.6	26.4	16.4	12.2	9.86	8.39	7.27	6.43	5.78	5.29	4.92	2.67
1.67V/cell	58.0	43.8	32.5	27.2	16.7	12.5	10.1	8.54	7.36	6.50	5.86	5.35	4.97	2.69
1.60V/cell	62.2	46.4	34.7	28.8	17.3	13.0	10.4	8.78	7.52	6.62	5.95	5.45	5.06	2.73

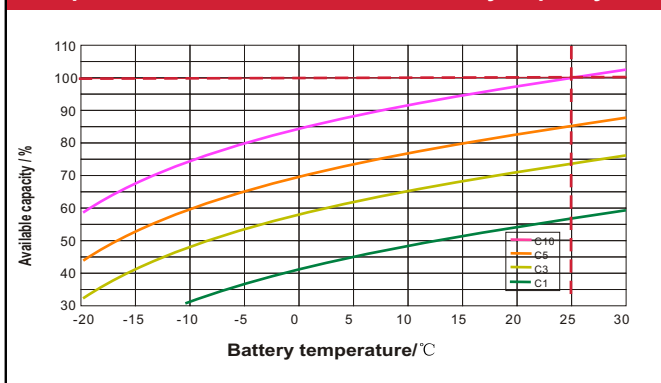
Discharge Characteristics



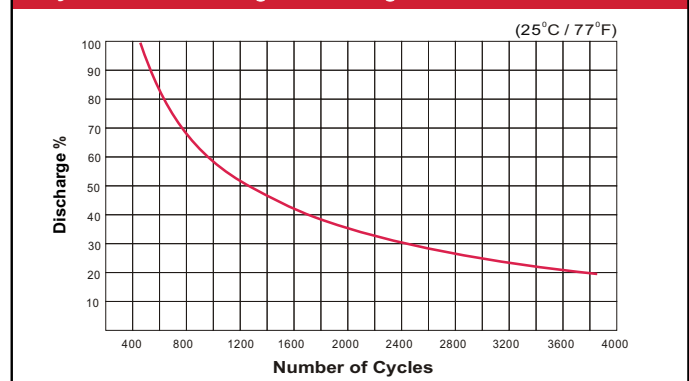
Float Charging Characteristics



Temperature Effects in Relation to Battery Capacity



Cycle Life / Discharge Percentage



Deep Cycle Gel Battery Features

- Ability to deeply discharge
- Maintenance-free
- Spill-free / Spill-proof
- Oxygen recombination technology
- Low self-discharge rate
- Excellent cycle life
- High power and volume ratio
- Unrivalled energy density
- Valve regulated
- Extremely safe operations
- VRLA Gel technology
- High reliability
- Rechargeable lead acid batteries
- Optimum quality
- Developed in Canada