

# Solstice<sup>®</sup> Panel

## HALF-CELL 440W SOLAR MODULE

High performance, half-cell mono-crystalline 10BB 440W all-black modules produced using state of the art automated production lines and made using the highest quality materials and quality control standards.

### HALF-CELL MONOCRYSTALLINE TYPE

• CTM10440HC11-09

### FEATURES AND BENEFITS

#### High Quality / High Power

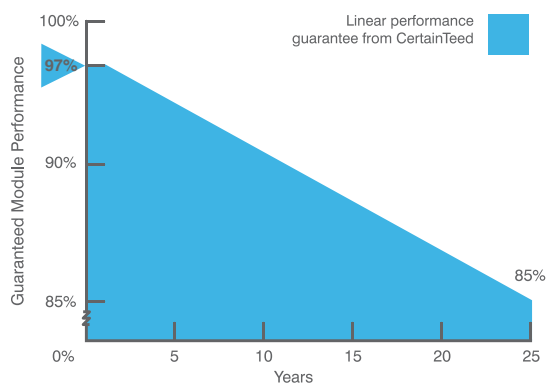
- 440W with black backsheet
- UL listed (61730-1, UL 61730-2)
- Positive power output tolerance

#### Limited Warranty\*

- 25-year linear power output warranty

\*See CertainTeed's limited warranty for details

### POWER OUTPUT WARRANTY



### OPERATING CONDITIONS

Dimensions	1903 x 1134 x 35 mm
Nominal Operating Cell Temperature	41 +/- 2° C
Operating Temperature	-40 to 85° C
Maximum System Voltage	1,500V
Fire Performance	Class C / Type 1
Maximum Wind Load	112 lbs/ft <sup>2</sup> (5400 Pa)
Maximum Snow Load	112 lbs/ft <sup>2</sup> (5400 Pa)

## ELECTRICAL CHARACTERISTICS

Nominal Output (Pmpp)	W	440
Voltage at Pmax (Vmpp)	V	34.35
Current at Pmax (Impp)	A	12.82
Open Circuit Voltage (Voc)	V	42.88
Short Circuit Current (Isc)	A	13.66
Output Tolerance	W	-0 / + 5
No. of Cells & Connections		108 half-cells with 3 bypass diodes
Maximum Series Fuse Rating		30A
Cell Type		Monocrystalline
Module Efficiency	%	20.4
Temperature Coefficient of Pmpp	%/C	-0.35
Temperature Coefficient of Voc	%/C	-0.27
Temperature Coefficient of Isc	%/C	+0.045

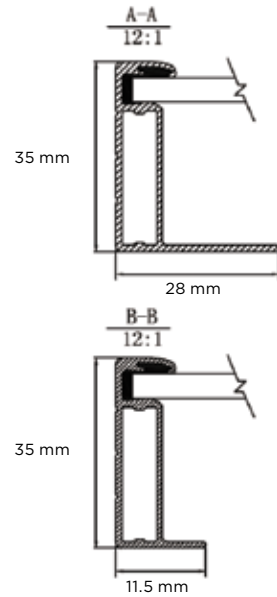
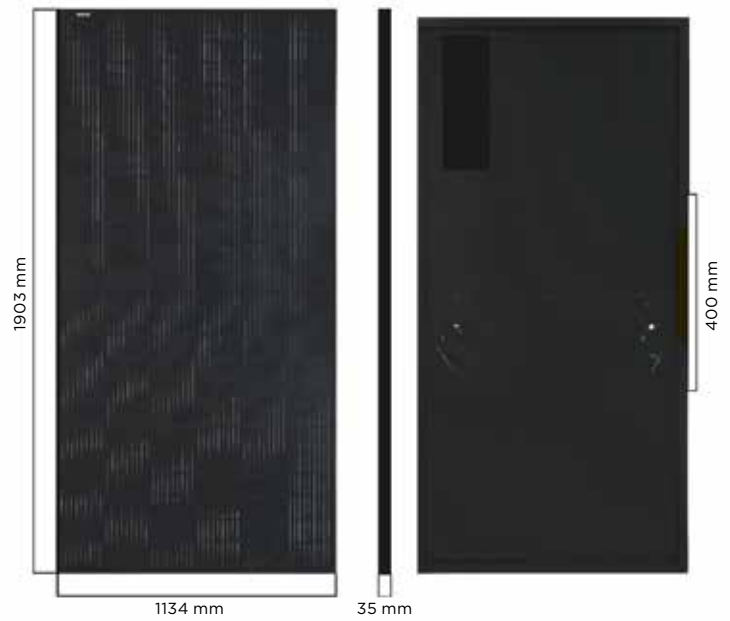
## MECHANICAL CHARACTERISTICS

Glass	Glass: 3.2 high transmission, tempered
Frame	Anodized aluminum (Black)
Junction Box	IP68
Output Cables	4 mm <sup>2</sup> (12AWG) PV Wire, Length 1.2m (47.2")
Connectors	Polarized MC compatible
Weight	51.8 lbs (23.5 kg)

## PACKAGING

Panels Per Pallet	31
Panels Per Container	744

## DIMENSIONS



**CertainTeed**

CEILING • DECKING • FENCE • GYPSUM • INSULATION • RAILING • ROOFING • SIDING • TRIM  
 20 Moores Road, Malvern, PA 19355 Professional: 800-233-8990 Consumer: 800-782-8777 [certainteed.com](http://certainteed.com)

©03/23 CertainTeed, Printed in the USA, Code No. 02-11-1949-US-EN