

# CBG400-2

2V 400AH

Deep Cycle Gel Battery



## CBG400-2



## Physical Specification

Part Number:	<b>CBG400-2</b>
Length:	<b>210 ± 2 mm ( 8.27 inches)</b>
Width: Container	<b>175 ± 2 mm ( 6.89 inches)</b>
Height:	<b>330 ± 2 mm ( 12.99 inches)</b>
Total Height (with terminal):	<b>340 ± 2 mm ( 13.39 inches)</b>
Approx Weight:	<b>25.5 kg (56.23lbs)</b>

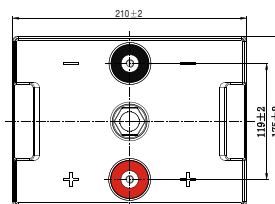
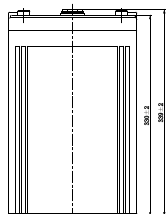
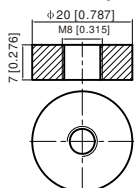
## Specifications

	Nominal Voltage	2V
	(C10, 1.80V/cell)	400AH
<b>Terminal Option</b>	T11	
<b>Container Material</b>	Standard Option	ABS
	Flame Retardant Option (FR)	ABS (UL94:VO)
<b>Rated Capacity</b>	(20hr, 21.3A, 1.80V/cell)	436.0 Ah
	(10hr, 40.0A, 1.75V/cell)	400.0 Ah
	(5hr, 70.2A, 1.75V/cell)	351.0 Ah
	(3hr, 105.6A, 1.75V/cell)	316.8 Ah
	(1hr, 239.5A, 1.67V/cell)	239.5 Ah
<b>Max Discharge Current (5s)</b>	2800A	
<b>Internal Resistance</b>	Approx. 0.65mΩ	
<b>Discharge Characteristics</b>	Operating Temp. Range	Discharge: -20°C~55°C (-4°F~131°F)
		Charge: 0°C~40°C (32°F~104°F)
		Storage: -20°C~50°C (5°F~122°F)
	Nominal Operating Temp. Range	25 ± 3°C (77 ± 5°F)
	Cycle Use	Initial Charging Current less than 100.0A. Voltage 2.4V~2.5V at 25°C (77°F) Temp. Coefficient -5mV/°C
	Standby Use	No limit on Initial Charging Current Voltage 2.25V~2.3V at 25°C (77°F) Temp. Coefficient -3mV/°C
	Capacity affected by Temperature	40°C (104°F)
25°C (77°F)		100%
0°C (32°F)		86%
<b>Design Floating Life at 20°C</b>	20 Years	
<b>Self Discharge</b>	Canbat Deep Cycle Gel batteries may be stored for up to 9 months at 25°C (77°F) and then a refresh charge is required. For higher temperatures the time interval will be shorter. Self-discharge is less than 2%	

## Dimensions

### T11 Terminal

Unit: mm [inches]



To ensure safe and efficient operation always refer to the latest edition of our datasheets, as published on our website [www.canbat.com](http://www.canbat.com). Canbat Technologies Inc. All rights reserved. All trademarks are the property of their respective owners. All data subject to change without notice. E&O.E

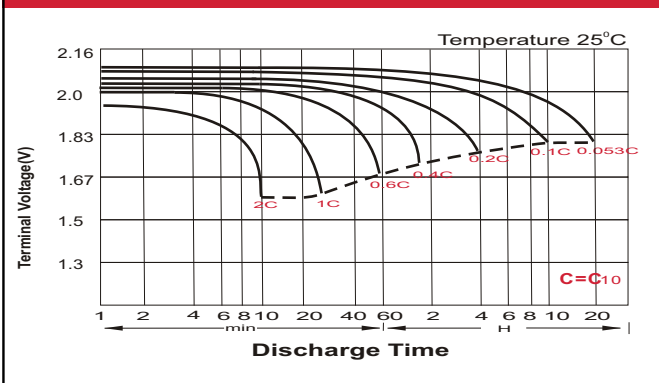
### Constant Current Discharge (Amperes) at 25 °C (77°F)

F.V/Time	20min	30min	45min	1h	2h	3h	4h	5h	6h	7h	8h	9h	10h	20h
1.85V/cell	355.1	279.2	212.8	184.9	118.0	93.4	74.5	64.3	55.5	49.2	44.3	40.5	38.3	20.9
1.80V/cell	407.8	311.8	235.1	204.1	127.8	100.1	79.0	67.6	58.3	51.4	46.5	42.6	40.0	21.3
1.75V/cell	458.0	342.9	253.6	218.0	135.3	105.6	82.8	70.2	60.3	53.3	48.0	43.9	40.8	22.6
1.70V/cell	493.5	367.3	269.4	231.0	143.5	110.0	85.4	72.3	62.4	55.0	49.4	45.0	41.8	22.9
1.67V/cell	513.1	382.0	279.2	239.5	147.1	113.6	87.6	73.9	63.5	55.9	50.1	45.7	42.3	23.1
1.60V/cell	555.9	408.2	299.9	254.3	153.1	118.1	90.8	76.2	65.0	57.0	51.0	46.6	43.1	23.5

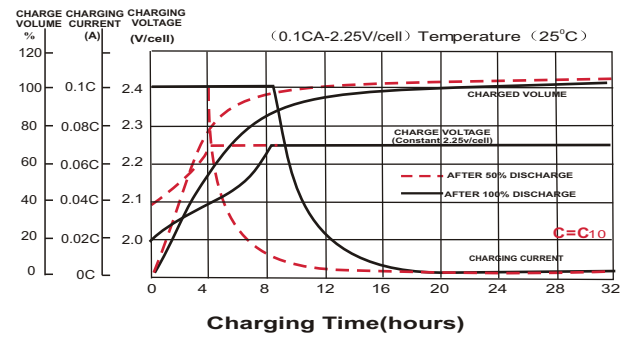
### Constant Power Discharge (Watts) at 25 °C (77°F)

F.V/Time	20min	30min	45min	1h	2h	3h	4h	5h	6h	7h	8h	9h	10h	20h
1.85V/cell	674.3	533.8	409.4	357.2	228.7	181.5	145.4	126.0	109.1	96.9	87.6	80.1	75.8	41.4
1.80V/cell	764.1	590.6	448.1	392.2	246.4	193.9	153.5	131.9	114.2	101.0	91.5	84.1	79.1	43.1
1.75V/cell	848.6	642.2	479.1	416.7	260.3	204.2	160.4	136.4	117.8	104.4	94.2	86.5	80.5	43.9
1.70V/cell	904.5	683.3	507.0	440.1	274.7	212.0	165.1	140.2	121.7	107.7	96.9	88.6	82.4	44.4
1.67V/cell	929.7	701.0	520.7	452.7	280.3	217.9	168.7	142.7	123.3	108.9	98.0	89.6	83.2	44.8
1.60V/cell	996.2	744.1	556.2	478.1	290.2	225.5	174.5	146.7	126.0	110.9	99.6	91.4	84.7	45.4

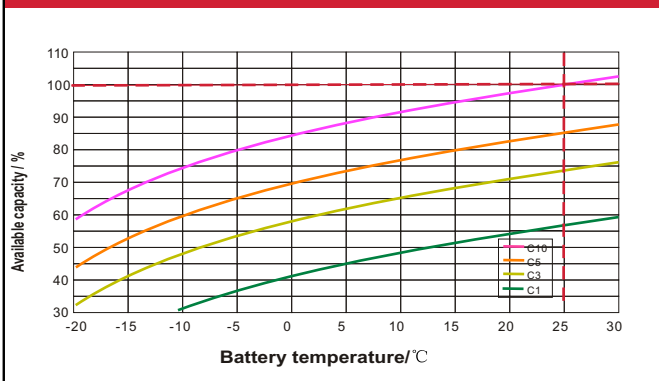
### Discharge Characteristics



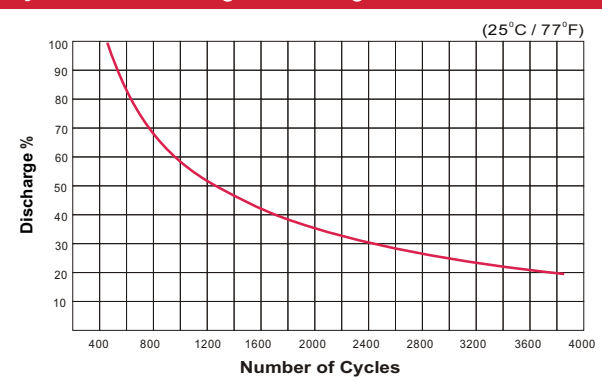
### Float Charging Characteristics



### Temperature Effects in Relation to Battery Capacity



### Cycle Life / Discharge Percentage



### Deep Cycle Gel Battery Features

- Ability to deeply discharge
- Maintenance-free
- Spill-free / Spill-proof
- Oxygen recombination technology
- Low self-discharge rate
- Excellent cycle life
- High power and volume ratio
- Unrivalled energy density
- Valve regulated
- Extremely safe operations
- VRLA Gel technology
- High reliability
- Rechargeable lead acid batteries
- Optimum quality
- Developed in Canada