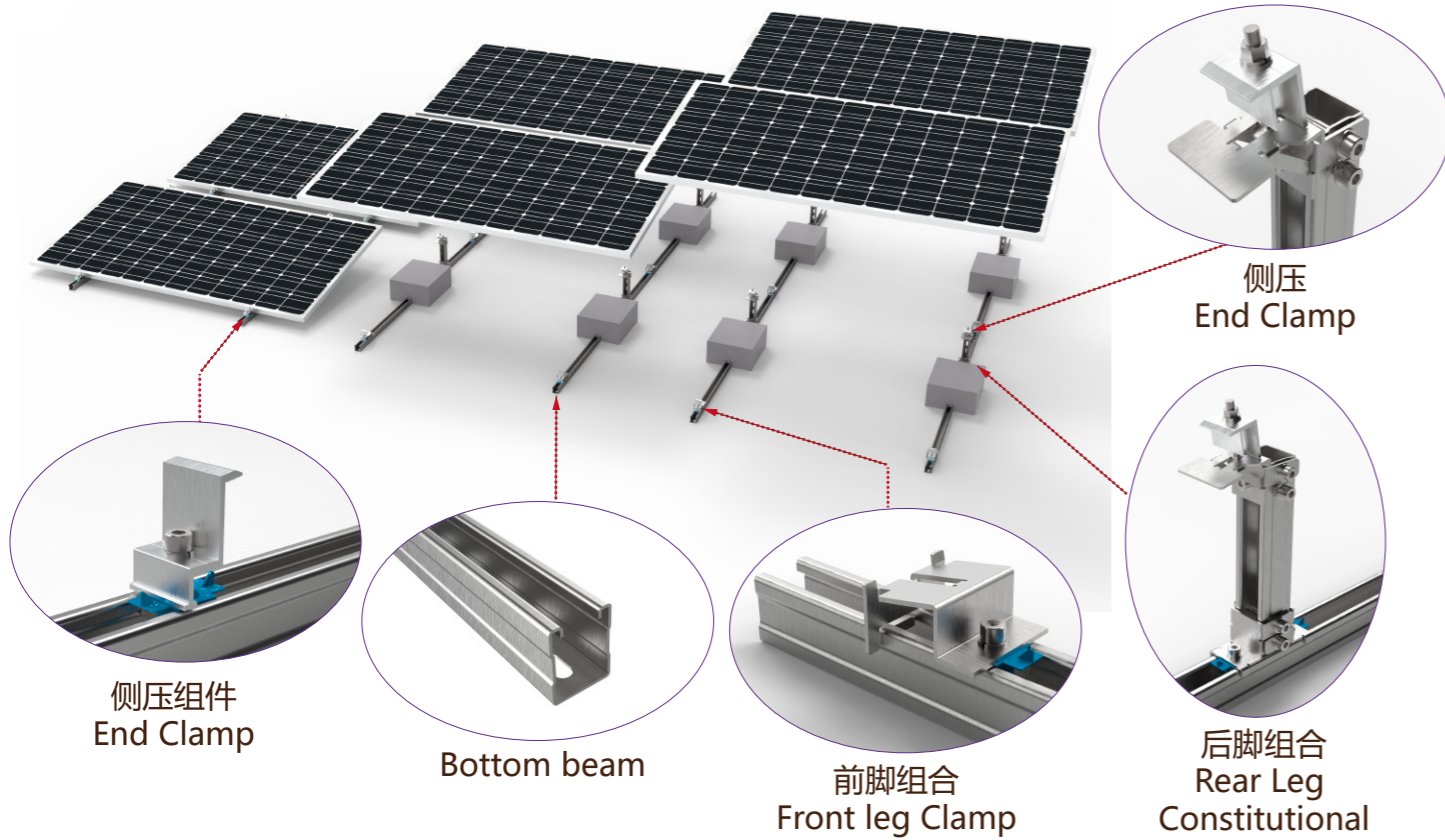
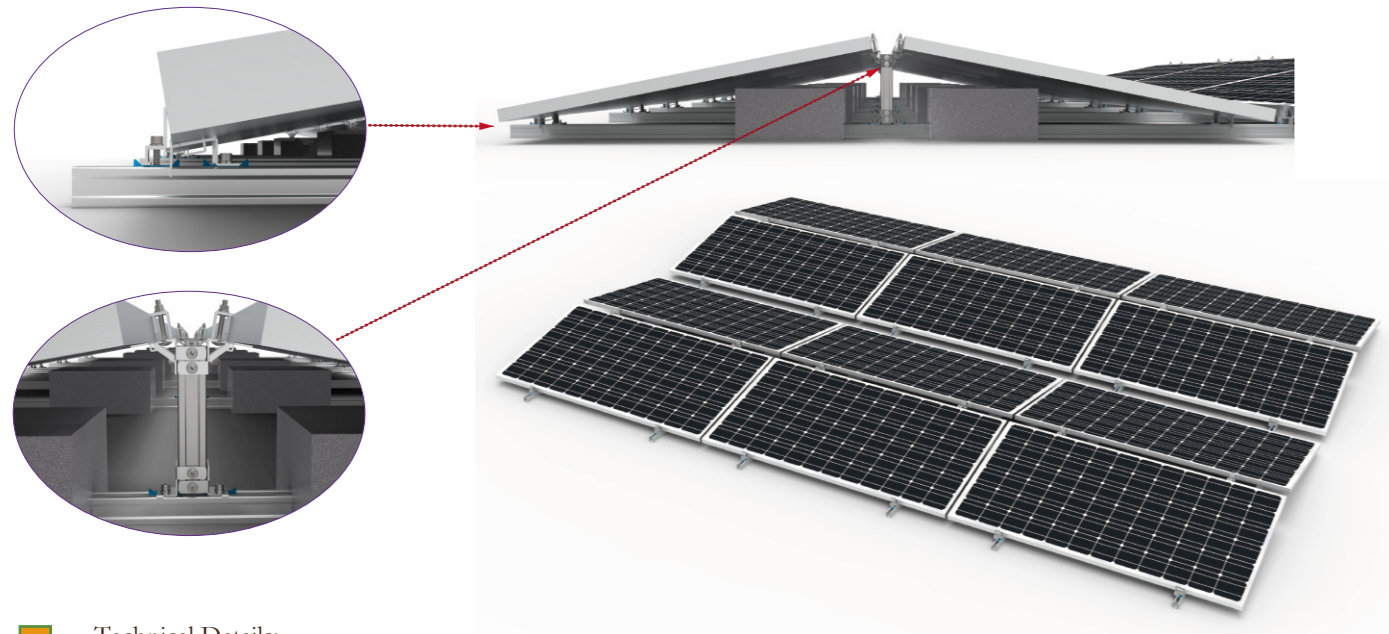


## Flat Roof Mounting Series-Steel Ballast Brack



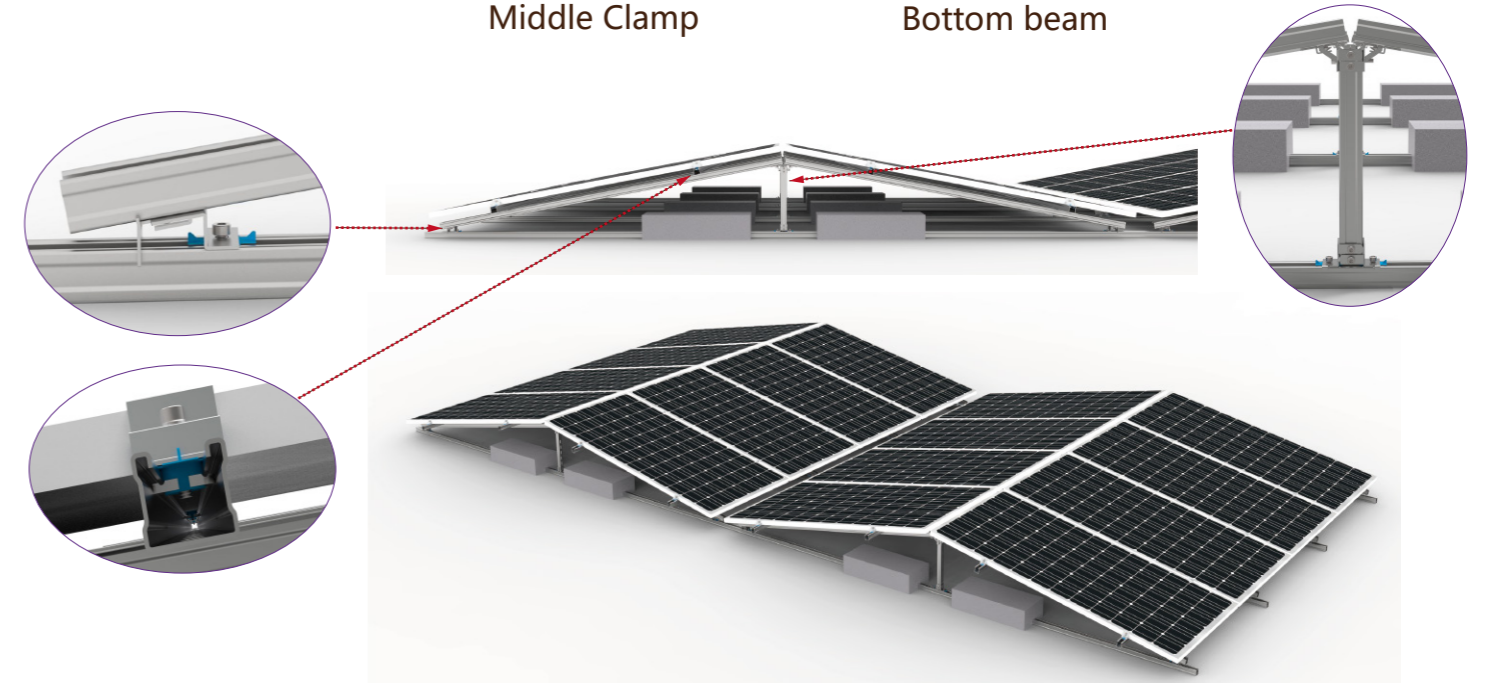
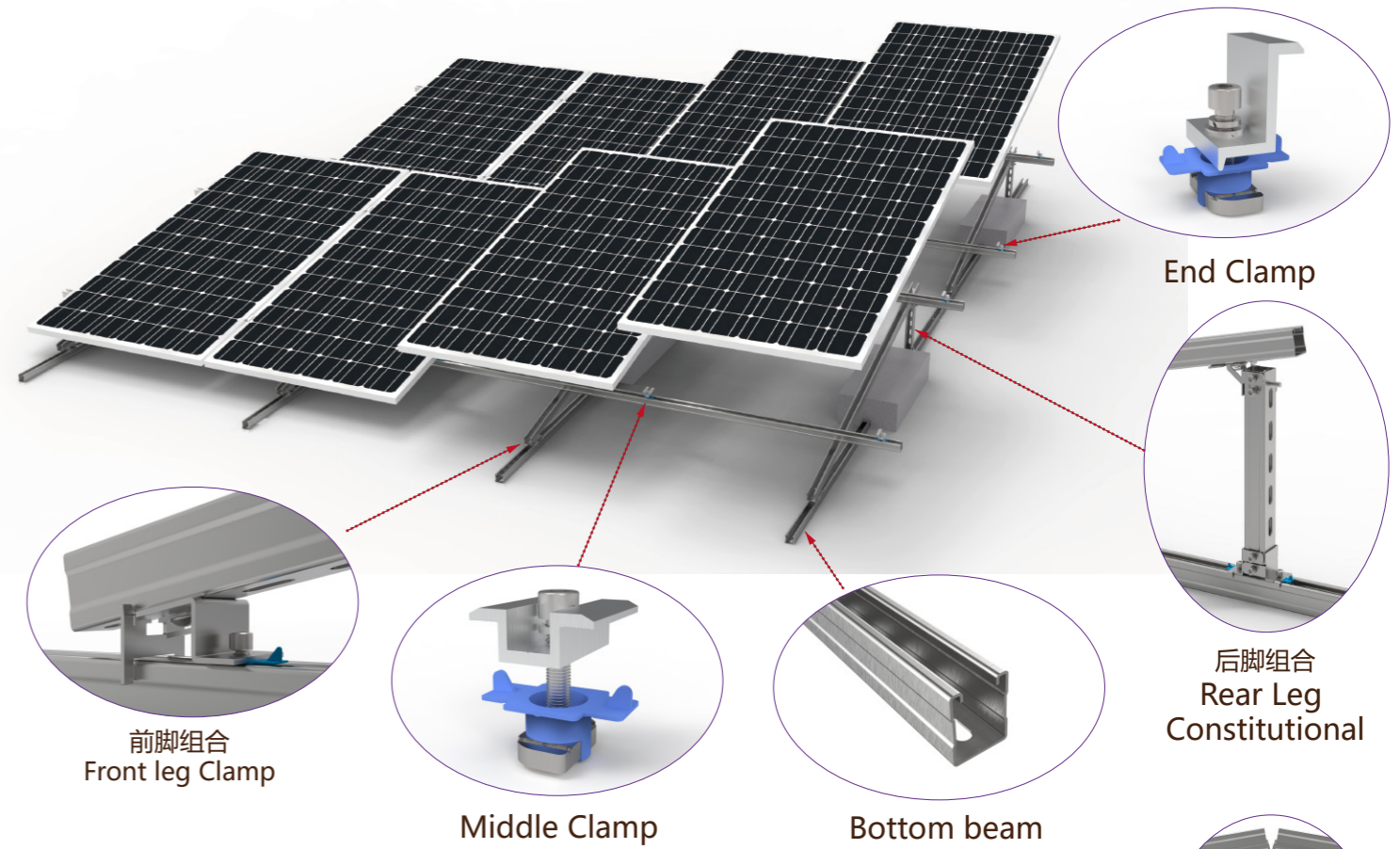
## Bidirectional Array



- Technical Details:
  - 1.Installation site; Flat Roof
  - 2.Module Orientation; Landscape
  - 3.Angle; 10°、15°、20°。
  - 4.Wind load: ≤60m/s
  - 5.Snow load; ≤1.6KN/ m<sup>2</sup>
  - 6.Material;Galvanized Steel/ZMA-Steel
  - 7.Surface Treatment: Galvanized/ZMA Coating
  - 8.Quality Warranty 12 years, Service life of 25 years.

Applicable standard: Japan JIS C8955:2017、China GB 50009 2001、Europe EN 1991-1-4:2005、India: IS:875、Australia AS NZ 1170、USA ASCE7 wind load、Malaysia MS 1553:2002 And other national standards。

## Flat Roof Mounting Series-Steel Ballast Brack (With Rail)



- Technical Details:
  - 1.Installation site; Flat Roof
  - 2.Module Orientation; Landscape
  - 3.Angle; 10°
  - 4.Wind load; ≤60m/s
  - 5.Snow load; ≤1.6KN/ m<sup>2</sup>
  - 6.Material;Galvanized Steel/ZMA-Steel
  - 7.Surface Treatment: Galvanized/ZMA Coating
  - 8.Quality Warranty 12 years, Service life of 25 years.

Applicable standard: Japan JIS C8955:2017、China GB 50009 2001、Europe EN 1991-1-4:2005、India: IS:875、Australia AS NZ 1170、USA ASCE7 wind load、Malaysia MS 1553:2002 And other national standards。