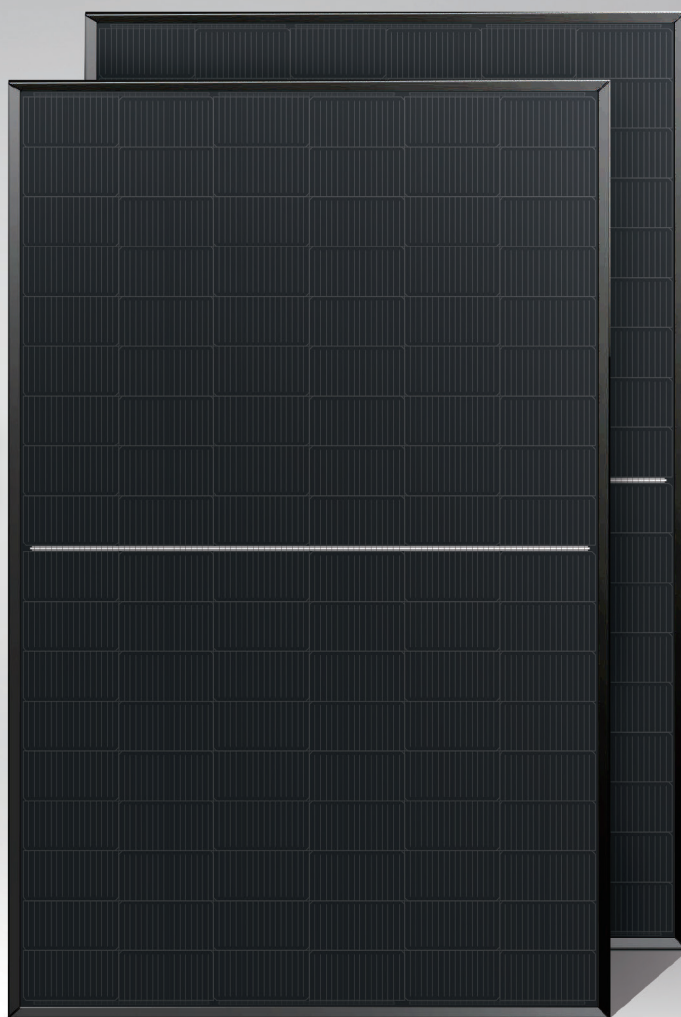


Gigalumi SL-M10NS



410-430W

22.02%
Maximum Efficiency

0~+5W
Power Tolerance



High Power Output



PID Resistance



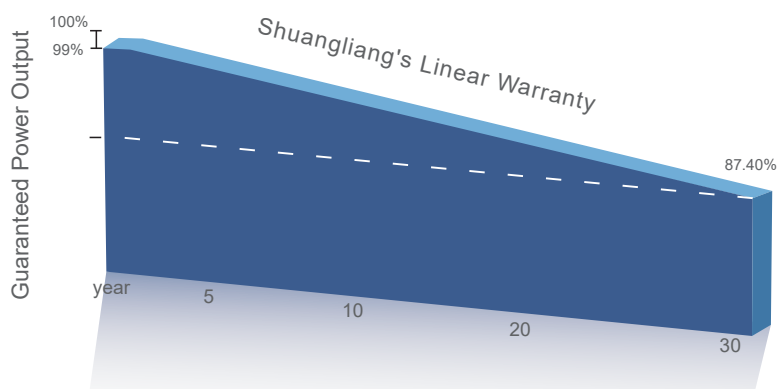
Longer Service Life



**Double Side
Power Generation**

LINEAR PERFORMANCE WARRANTY

- 12 Year Product Warranty
- 30 Year Linear Power Warranty



COMPREHENSIVE CERTIFICATES

- ISO 45001: 2018 Occupational Health and Safety Management System
- ISO 14001: 2015 Environmental Management System
- ISO 9001: 2015 Quality Management System
- IEC 61215 / IEC 61730 / IEC 61701 / IEC 62716
IEC 62804 / IEC 62782 / IEC60068



Shuangliang Solar-Tech(Baotou) Co., Ltd
www.shuangliangglobal.com
ktsales@shuangliang.com



ELECTRICAL DATA (STC)

Peak Power Watts-PMAX (Wp)	410	415	420	425	430
Power Output Tolerance-PMAX (W)	0~+5				
Maximum Power Voltage-VMPP (V)	31.43V	31.62V	31.80V	31.99V	32.17V
Maximum Power Current-IMPP(A)	13.05A	13.13A	13.21A	13.29A	13.37A
Open Circuit Voltage-Voc (V)	38.19V	38.43V	38.67V	38.90V	39.13V
Short Circuit Current-ISC(A)	13.70A	13.77A	13.84A	13.92A	13.99A
Module Efficiency (%)	21.00%	21.25%	21.51%	21.76%	22.02%

STC: Irradiance 1000W/m², Cell Temperature 25°C, Air Mass AM1.5

TEMPERATURE RATINGS

Temperature Coefficients of Pmax	-0.300%/°C
Temperature Coefficients of Voc	-0.260%/°C
Temperature Coefficients of Isc	0.045%/°C

MAXIMUM RATINGS

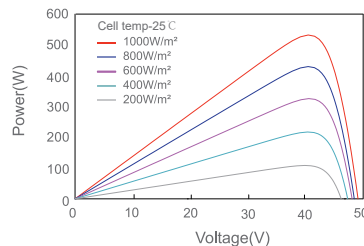
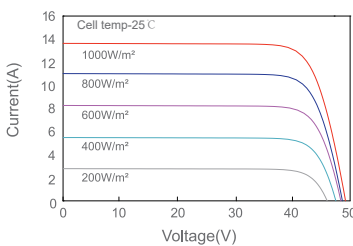
Operational Temperature	-40~+85 C
Maximum System Voltage	1500V
Max Series Fuse Rating	30A

(DO NOT connect Fuse in Combiner Box with two or more strings in parallel connection)

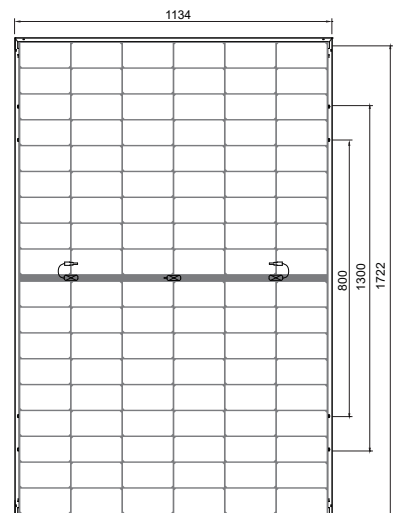
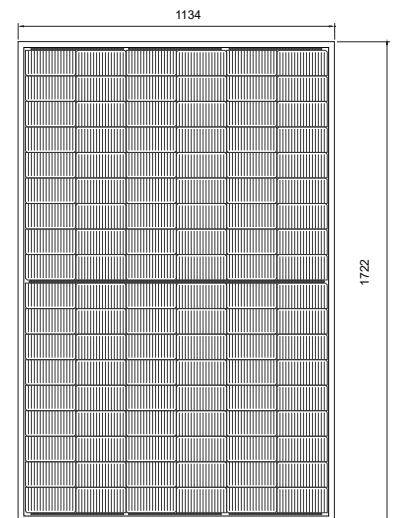
DOUBLE SIDE POWER GENERATION DATA (BACKSIDE GAIN)

5%	Pmax (Wp)	431Wp	436Wp	441Wp	446Wp	452Wp
	Module Efficiency (%)	22.07%	22.33%	22.58%	22.84%	23.15%
15%	Pmax (Wp)	472Wp	477Wp	483Wp	489Wp	495Wp
	Module Efficiency (%)	24.17%	24.43%	22.94%	25.04%	25.35%
25%	Pmax (Wp)	513Wp	519Wp	525Wp	531Wp	538Wp
	Module Efficiency (%)	26.27%	26.58%	26.89%	27.19%	27.55%

CHARACTERISTICS



MECHANICAL DIAGRAMS



MECHANICAL DATA

Solar Cells	N Type Monocrystalline 182×91mm
Cell Orientation	108 cells (6×18)
Module Dimensions	1722×1134×30mm
Weight	25kg
Glass	2.0mm (0.08 inches), High Transmission, AR Coated Tempered Glass
Back glass	2.0mm mesh glaze plating
Frame	Black Anodized Aluminium Alloy
J-Box	IP 68 rated
Cables	(+):300mm, (-):300mm or Customized Length
Connector	MC4 or MC4 Compatible

PACKAGING CONFIGURATION

Modules per box: 36 pieces
 Modules per 40' HQ container: 936 pieces

