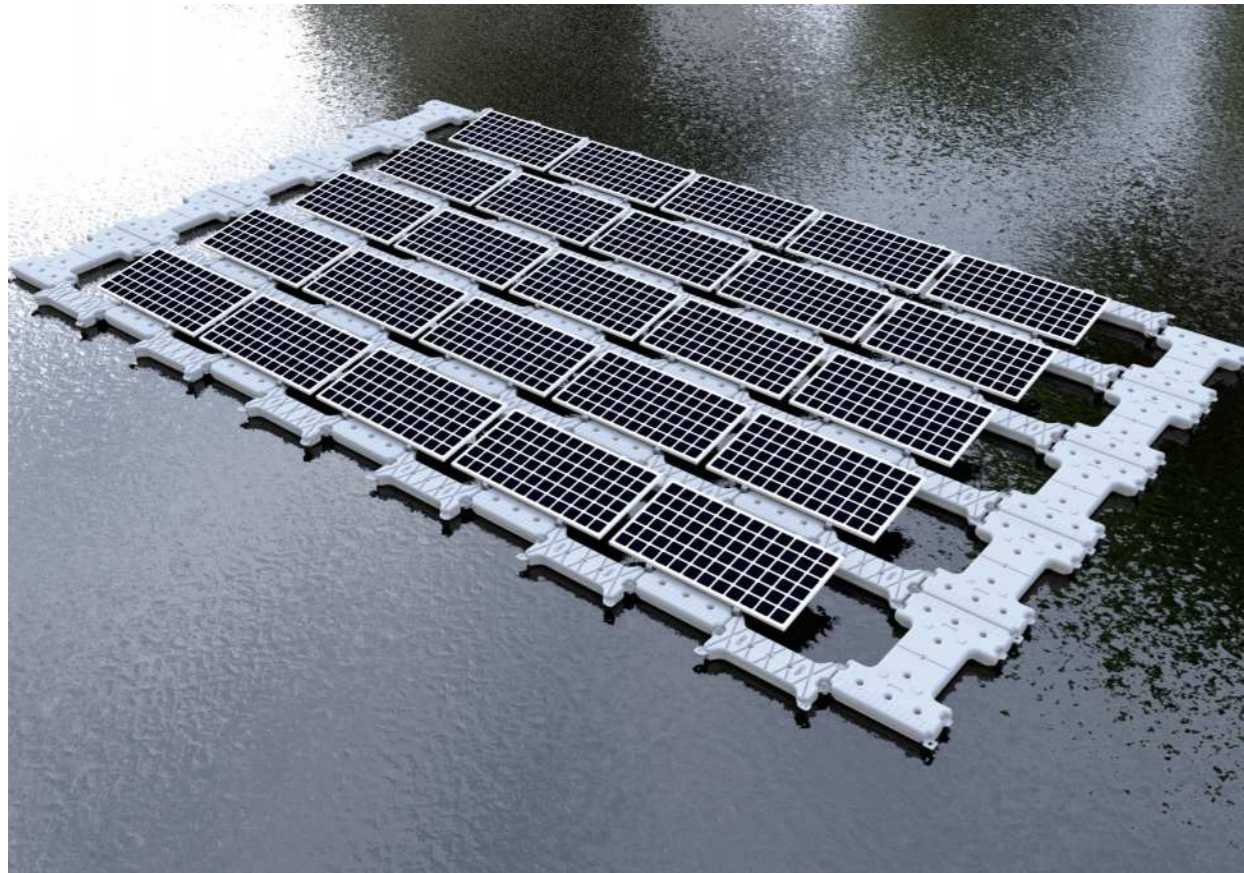






GS FLOATING PV PLANT



Traits of the product

-  New environmental protection material
No pollution to the water quality
-  Protection against UV and aging
-  Excellent chemical stability
-  Recyclable



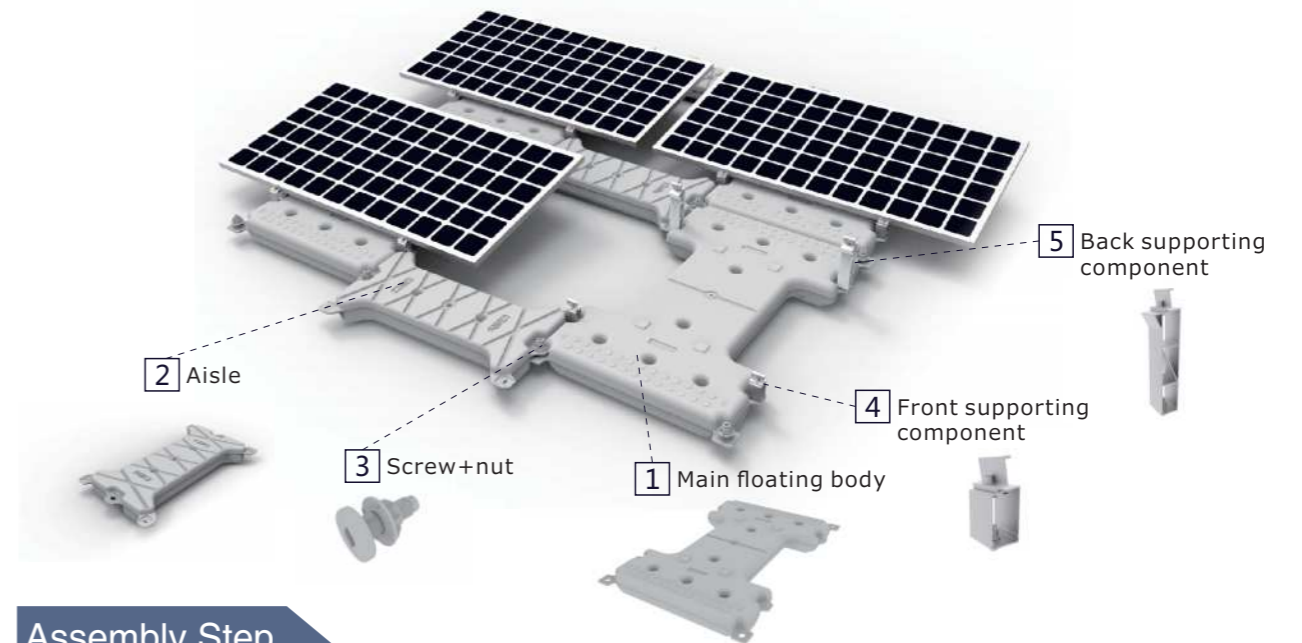
Technical Information

Material : HDPE
 Method of UV protection : grey color painting ,UV absorbent and anti-ager added;
 Mounting angle : 10 degree
 Floatage of the main floating body: No less than 150kg.

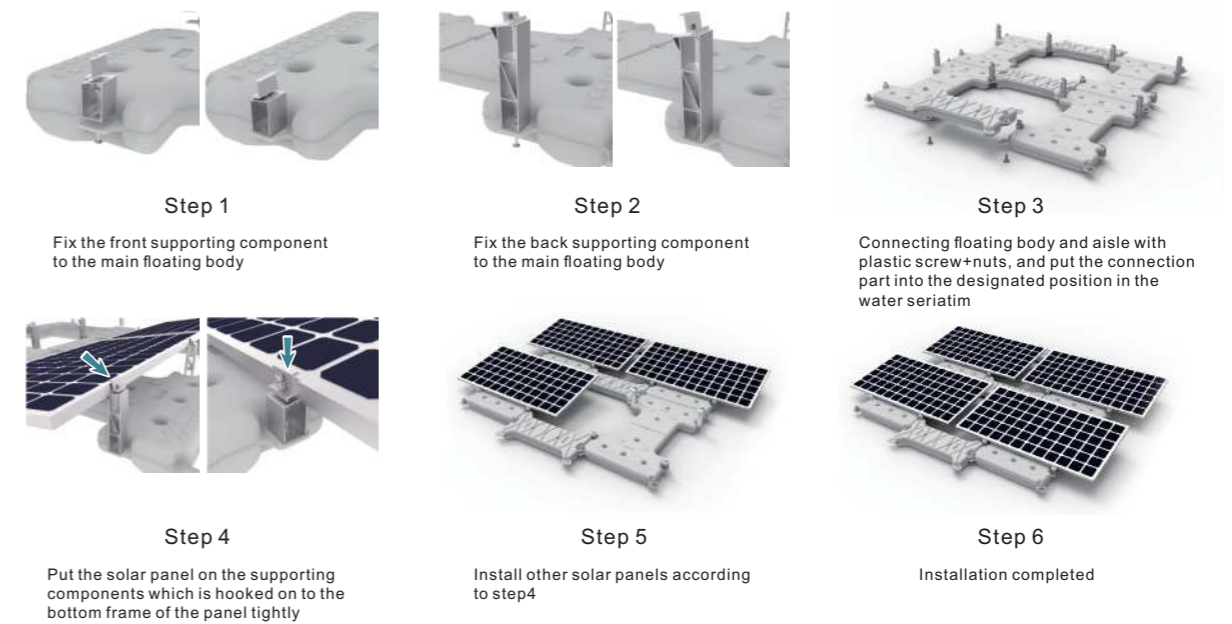
- The weight of wave : <1m
- Water flow rate: < 2m/s
- The Wind Resistance : Grade 12
- The temperature : -40°C~100°C
- Module specification:With framework
- Direction of module setting: Horizontal
- Material: high strength aluminum alloy
- Heat resistant treatment: anodic oxidation

* If you would like a site visit,
 please contact Grace Solar.
 * Product specifications and appearance may be changed without notice.

Product assembly

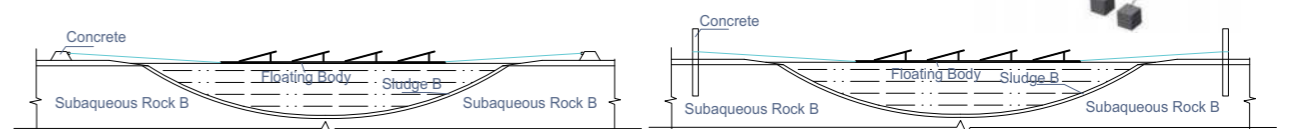


Assembly Step

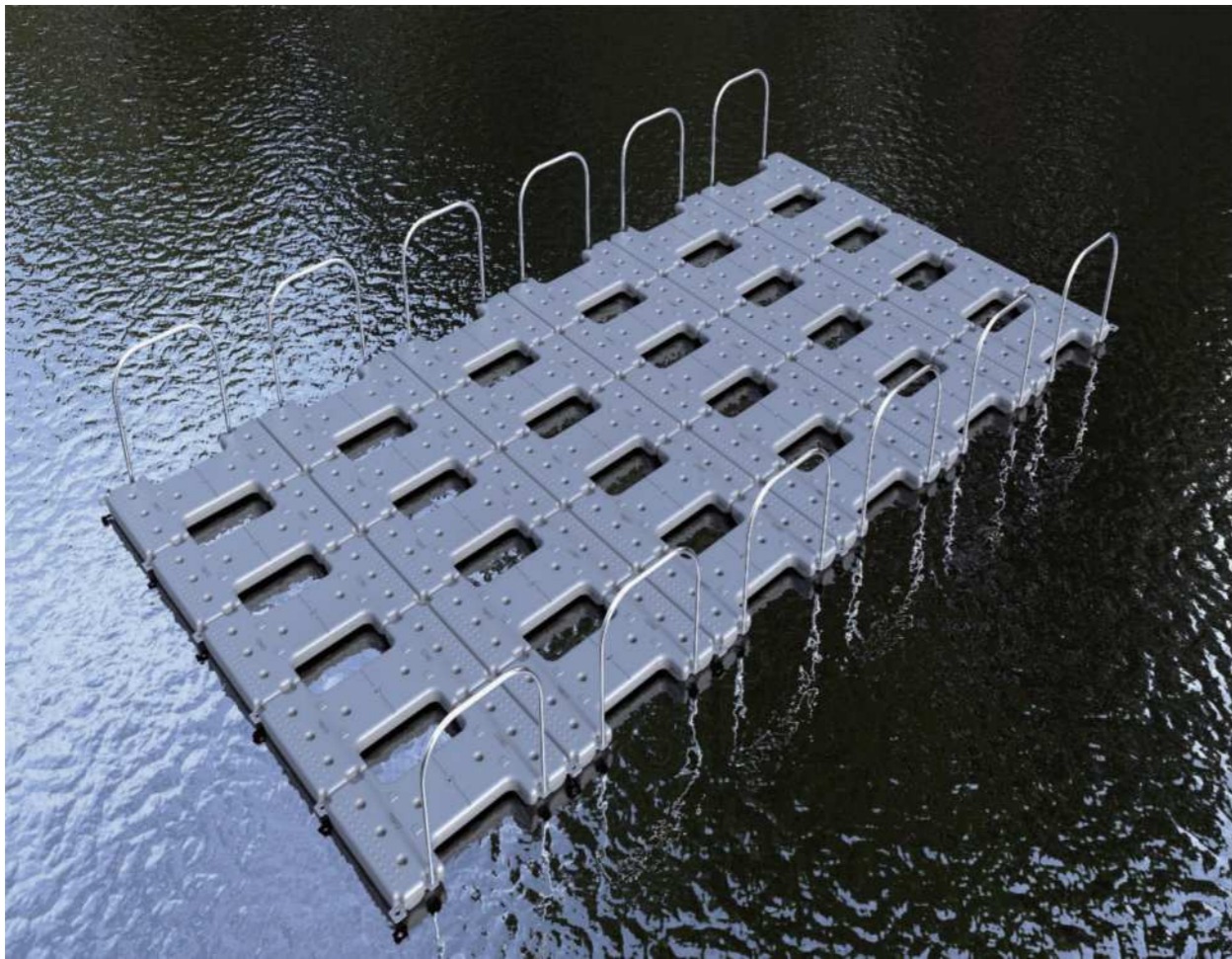


Fixation

- 1 Precast concrete**
 Applied to the proper sedimentation ,low, stable and close to the bank side area.
- 2 Underwater fixation**
 Applied to the large water area with depth over 6 meters and complex topographic condition.



FLOATING PLATFORM SYSTEM



Grace's floating platform system is a floating platform system which is suitable for yacht berth wharf, water leisure platform, scenic spot floating platform, fishing wharf, floating bridge and other scenes.

Advantages

❖ Fast and easy installation

Simple structure, fewer components, convenient installation.

❖ Advantages of Materials

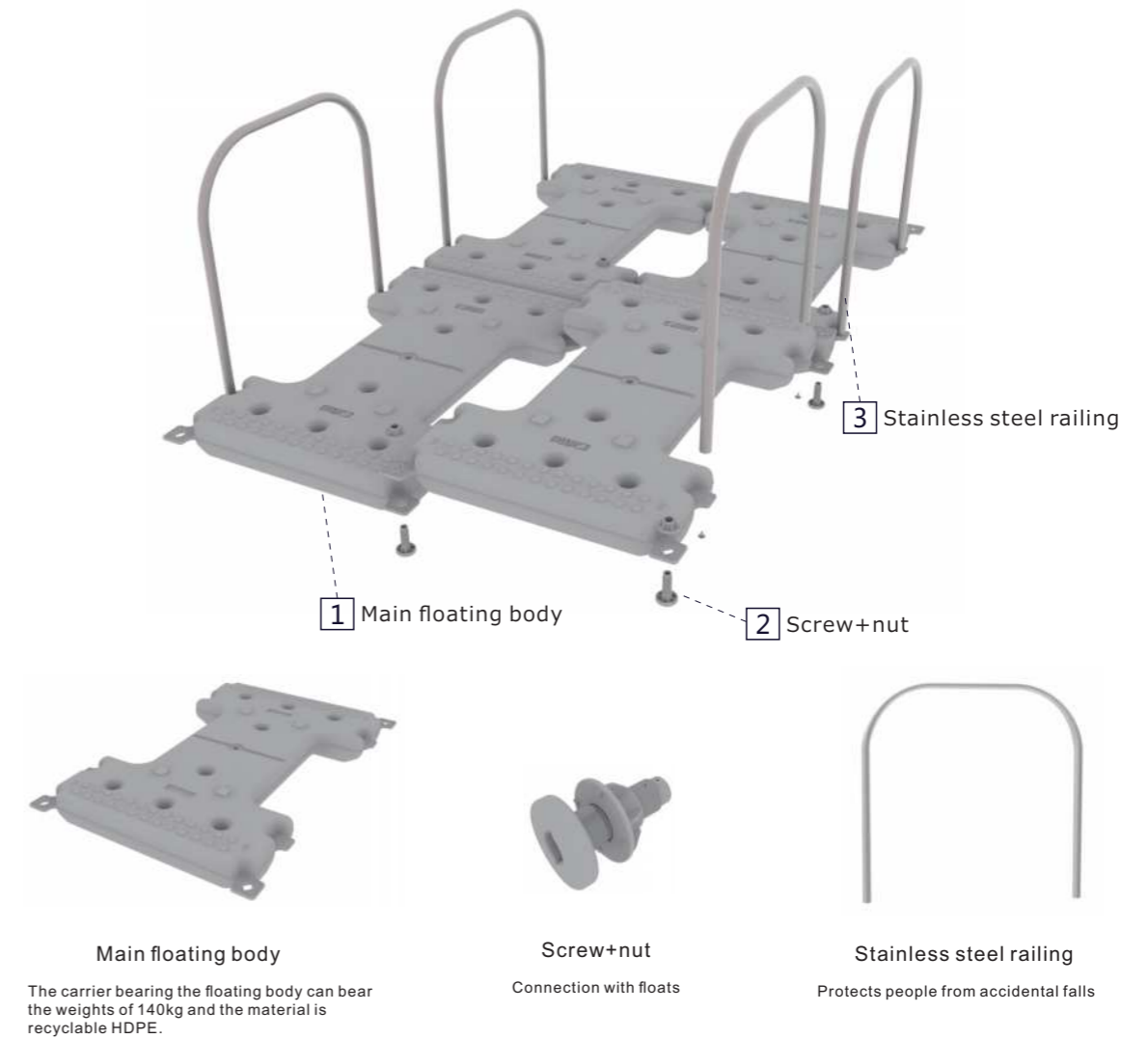
It uses the new environmental-friendly material HDPE which has advantage of anti-aging good chemical performance and longer design life. It can be recycled and ensure 25 years duration.

❖ High structural versatility

A single float can withstand load up to 140kg, and the desired shape size can be freely assembled between the floats which making the float platform available applicants for multiple scenes.

APPLICATION

Components Description



Item No	Name	Description
GL-FLC-ZFT-1652-1090	Main floating body	1652x1090x155mm
GL-FLC-M30	Plastic bolt nut	30x90mm
GL-FLC-RA	Stainless steel railing	990x1000mm