



AS-7M132-HC 495W~510W Black

MONOCRYSTALLINE PERC MODULE



ADVANCED PERFORMANCE & PROVEN ADVANTAGES

- High module conversion efficiency up to 21.50% by using innovative Half-cell design and Multi-busbar(MBB) cell technology.
- Low temperature coefficient and excellent performance under high temperature and low light conditions.
- Robust aluminum frame ensures the modules to withstand wind loads up to 2400Pa and snow loads up to 5400Pa.
- High reliability against extreme environmental conditions (passing salt mist, ammonia and hail tests).
- Potential induced degradation (PID) resistance.

CERTIFICATIONS

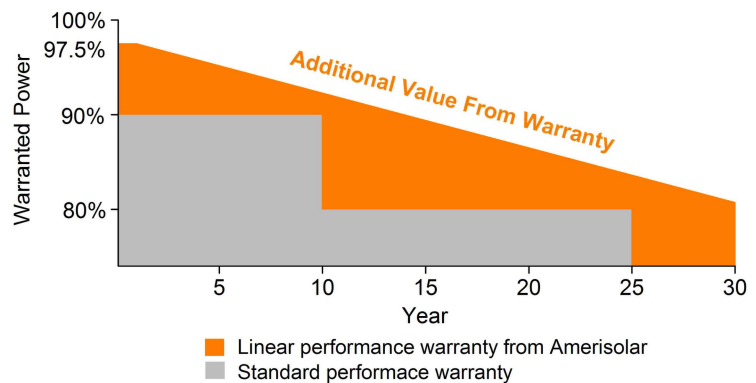


- IEC 61215, IEC 61730, CE
- ISO 9001:2015: Quality management system
- ISO 14001:2015: Environmental management system
- ISO 45001:2018: Occupational health and safety management system

SPECIAL WARRANTY

- 20 years product warranty
- 30 years linear power output warranty

Passionately
committed to
delivering innovative
energy solution



ELECTRICAL CHARACTERISTICS AT STC

Maximum Power (P_{max})	495W	500W	505W	510W
Open Circuit Voltage (V_{OC})	45.40V	45.55V	45.70V	45.85V
Short Circuit Current (I_{SC})	13.82A	13.90A	13.97A	14.05A
Voltage at Maximum Power (V_{mp})	38.23V	38.38V	38.53V	38.68V
Current at Maximum Power (I_{mp})	12.96A	13.03A	13.11A	13.19A
Module Efficiency (%)	20.80	21.10	21.30	21.50
Operating Temperature	-40°C to +85°C			
Maximum System Voltage	1000/1500VDC(IEC)			
Fire Resistance Rating	Class C			
Maximum Series Fuse Rating	25A			

STC: Irradiance 1000W/m², Cell temperature 25°C, AM1.5; Tolerance of Pmax: ±3%; Measurement Tolerance: ±3%

ELECTRICAL CHARACTERISTICS AT NOCT

Maximum Power (P_{max})	370W	374W	378W	381W
Open Circuit Voltage (V_{OC})	42.69V	42.83V	42.97V	43.11V
Short Circuit Current (I_{SC})	11.17A	11.24A	11.30A	11.36A
Voltage at Maximum Power (V_{mp})	35.51V	35.65V	35.79V	35.93V
Current at Maximum Power (I_{mp})	10.42A	10.48A	10.55A	10.61A

NOCT: Irradiance 800W/m², Ambient temperature 20°C, Wind Speed 1 m/s

MECHANICAL CHARACTERISTICS

Cell type	Monocrystalline 182*91mm
Number of cells	132(6x22)
Module dimensions	1094x1134x30mm
Weight	26kg
Front cover	3.2mm tempered glass with AR coating
Frame	Anodized aluminum alloy
Junction box	IP68, 3 diodes
Cable	4mm ² , Length:300mm
Connector	MC4 or MC4 compatible

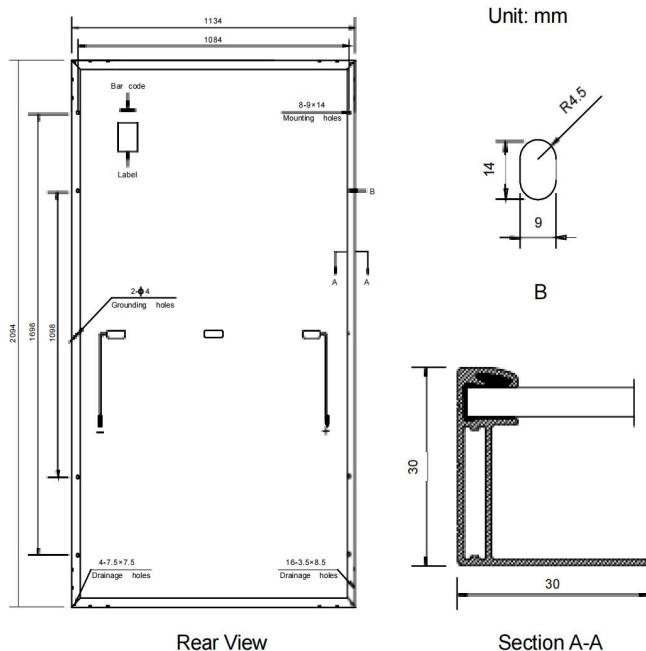
TEMPERATURE CHARACTERISTICS

Nominal Operating Cell Temperature (NOCT)	43°C±2°C
Temperature Coefficients of P_{max}	-0.36%/°C
Temperature Coefficients of V_{OC}	-0.28%/°C
Temperature Coefficients of I_{SC}	0.05%/°C

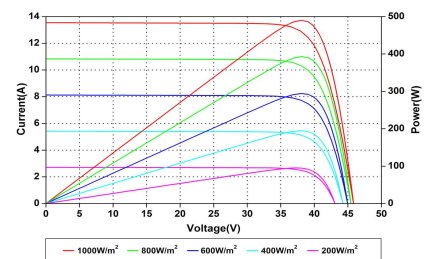
PACKAGING

Standard packaging	36pcs/pallet
Module quantity per 20' container	180pcs
Module quantity per 40' container	792pcs (HQ)

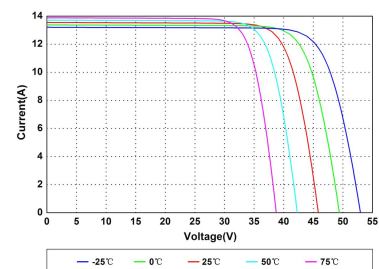
ENGINEERING DRAWINGS



IV CURVES



Current-Voltage and Power-Voltage Curves at Different Irradiances



Current-Voltage Curves at Different Temperatures

Specifications in this datasheet are subject to change without prior notice.