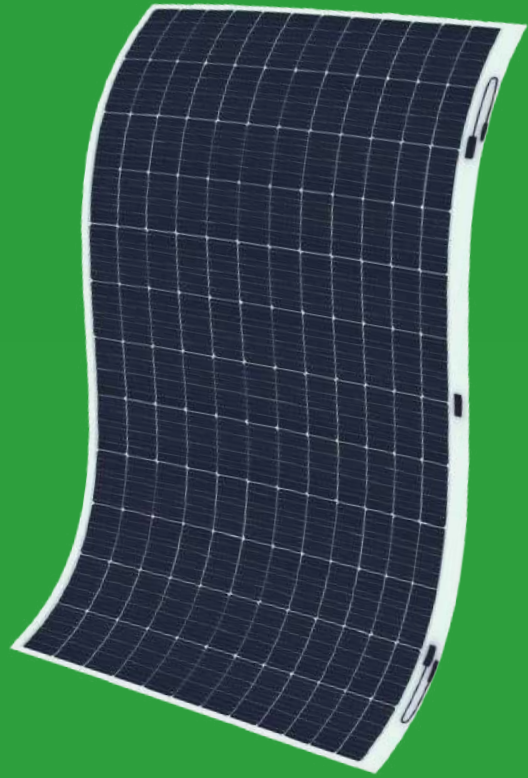



520W~535W


MONO-FLEXIBLE MODULE


IEC61215(2016),IEC61730(2016)
 ISO9001:2015 Quality Management System
 ISO14001:2015 Environment Management System
 ISO45001:2018 Occupational Health and Safety Management System




Key Features

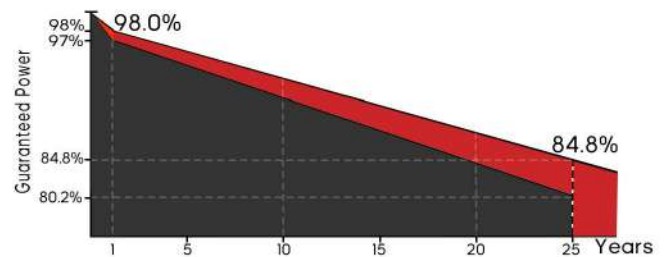
 **Lightweight**
 Optimized composite materials, 60% lighter at the same power.

 **Resin-fiber Strength Improvement**
 The modulus is as high as 1300MPa, improving the overall strength of the module and solving the hidden crack problem of the cell.

 **Self-developed Polymer Materials**
 Light transmittance $\geq 91\%$, far more than conventional solar panels, photoelectricity conversion without a barrier. Ultra-high UV blocking ability ensures power generation efficiency for 25 years.

 **Easy to Install**
 Factory-integrated for easy transportation and handling; Eliminating traditional bracket systems and saving installation costs and time.

Linear Performance Warranty



Leading product and power warranty

12 YEAR Materials and workmanship warranty
25 YEAR Linear power warranty



Electrical Characteristics(STC*)

Module Type	AS-7M144-HC-520W	AS-7M144-HC-525W	AS-7M144-HC-530W	AS-7M144-HC-535W
Maximum Power(Pmax)[W]	520	525	530	535
Maximum Power Voltage(Vmp)[V]	41.03	41.21	41.39	41.57
Maximum Power Current (Imp)[A]	12.67	12.75	12.81	12.87
Open-circuit Voltage (Voc)[V]	48.94	49.09	49.24	49.39
Short-circuit Current (Isc)[A]	13.64	13.70	13.76	13.83
Module Efficiency STC(%)	19.54	19.73	19.91	20.10

*STC : Irradiance at 1000 W/m², Cell Temperature 25°C, Air Mass AM1.5

Electrical Characteristics(NOCT*)

Module Type	AS-7M144-HC-520W	AS-7M144-HC-525W	AS-7M144-HC-530W	AS-7M144-HC-535W
Maximum Power(Pmax)[W]	394	397	401	404
Maximum Power Voltage(Vmp)[V]	37.80	38.00	38.20	38.40
Maximum Power Current (Imp)[A]	10.36	10.42	10.47	10.53
Open-circuit Voltage (Voc)[V]	46.10	46.20	46.30	46.40
Short-circuit Current (Isc)[A]	10.91	10.96	11.02	11.07

*NOCT : Irradiance at 800W/ m², Ambient Temperature 20°C, Wind Speed 1 m/s

Mechanical Characteristics

Cell Type	Mono-crystalline 182 * 91 mm
No. of cells	144(12×12)
Dimensions	2246 * 1185 * 2.5mm
Weight	8.0Kg
Junction Box	IP68 Rated
Output Cables	4.0 mm ²
Cable Length	400mm or Customized Length

Application parameters

Maximum system voltage	DC1500V(IEC)
Maximum series fuse rating	25A
Mechanical Load	Snow load 5400Pa, Wind load 2400Pa

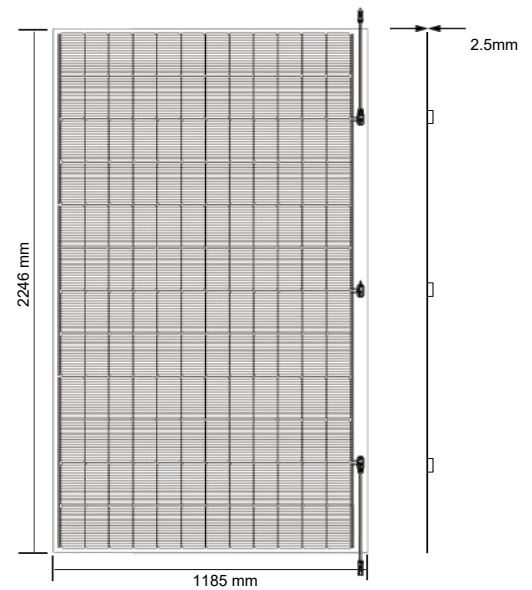
Temperature coefficient

Temperature coefficients of Pmax	-0.37 %/°C
Temperature coefficients of Voc	-0.28 %/°C
Temperature coefficients of Isc	0.05 %/°C
Operating Temperature	-40°C ~ +85°C
Nominal operating cell temperature (NOCT)	45±2 °C

Packaging Configuration

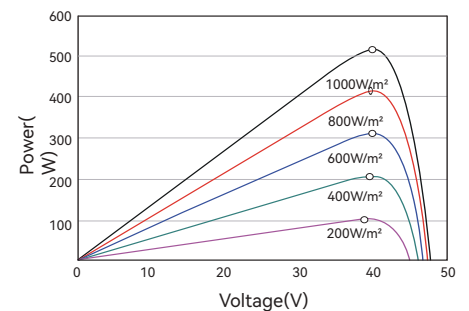
70pcs/pallets, 700pcs/ 40'HQ Container

Dimension



Electrical Performance

P-V Curves of PV Module (530W)



I-V Curves of PV Module (530W)

