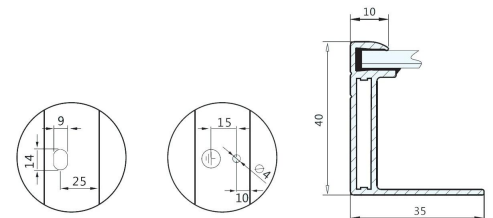
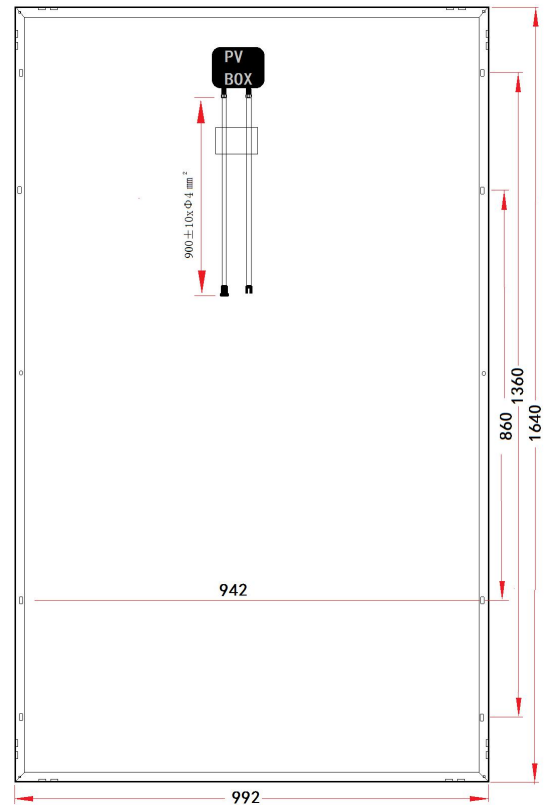
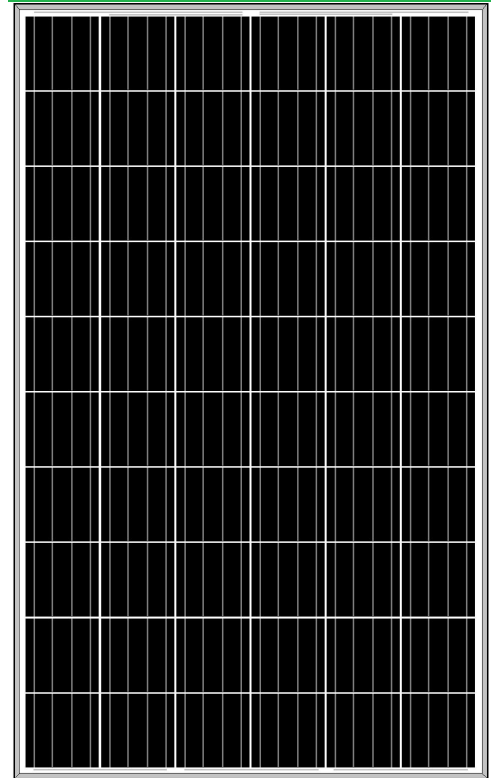


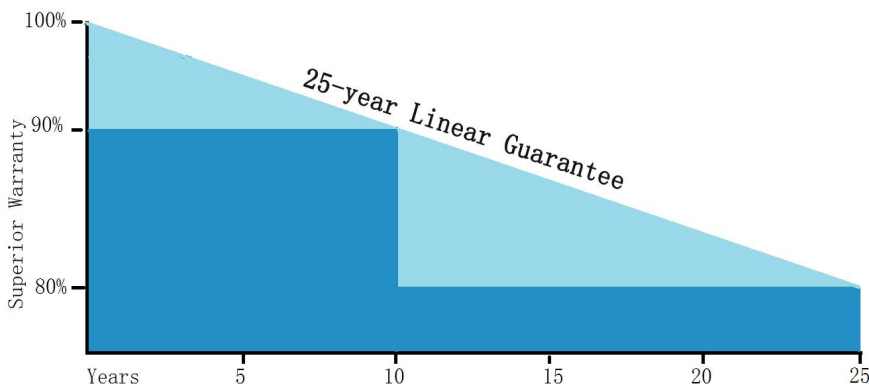
**Polycrystalline Solar Panel
255W-270W**



Key Features

- Power output: Positive tolerance, up to 5W
- 100% 2 EL tests before/after laminated
- 10 years warranty for workmanship
- 25 years irrevocable warranty
- Anti-reflective and self-cleaning surface reduces power loss from dirt dust
- Snow loads 5400Pa and wind loads 2400Pa
- High performance and power output in low solar irradiation
- High Salt and ammonia resistance
- TUV, UL CE Standard
ISO9001:2008 ISO14001:2004 OHSAS18001:1999

Superior Warranty



25years Linear Power Output Warranty

In the first year of warranty, the peak power of solar panel should be on less than 95% of the rated power. At the end of the 25th year, power of modules should be at least 80% of the rated power.

Assemble Line



Application/Project



MECHANICAL PARAMETERS

Solar cell	Polycrystalline solar cell
Front Cover	3.2mm tempered glass
Back Cover	TPT (Tedlar-PRT-Tedlar)
Encapsulate	EVA(ethylene vinyl acetate)
Frame	Double-layer anodized aluminum alloy
Junction Box	IP65/IP67 compatible
Cables / Connectors	MC4 connectors, 4mm ² x900mm Cable
Dimensions(mm)	1640x992x40
Weight(kg)	18.5

Maximum System Voltage	1000V DC
Operating Temperature	-40℃~85℃
Storage Temperature	-40℃~85℃
Maximum Wind Load	2400Pa
Maximum Snow Load	5400Pa
Application Class	Class A

ELECTRICAL PARAMETERS

Series Number	GSPV-255W (156P)60	GSPV-260W (156P)60	GSPV-265W (156P)60	GSPV-270W (156P)60
Cell Type	Poly			
Max power	255w	260w	265w	270w
Power Tolerance	0~5w			
Nominal Voltage(V)	30.5	30.7	31.2	31.5
Nominal Current(A)	8.35	8.47	8.51	8.58
Open circuit voltage(V)	37.6	37.9	38.0	38.3
Short circuit current(A)	8.90	8.99	9.09	9.17
Size of cell/strip(mm)	156.7x156.7			
Number of cell/strip	60(6x10)			
Power Of cell	>4.58w		>4.67w	>4.75w
FF(fill factor)%	77.0		77.1	77.3
NOCT	45℃±2℃			
Temperature Co-efficient	Isc		+0.049% /℃	
	Voc		-0.317% /℃	
	Pmpp		-0.430% /℃	
STC :Irradiance 1000w/m ² , Module temperature 25℃,AM=1.5				

WARRANTY

10years on material on workmanship
10years with 90% output, 20years with 80% output

Packing Configuration

26pcs per pallet
728pcs per 40HQ