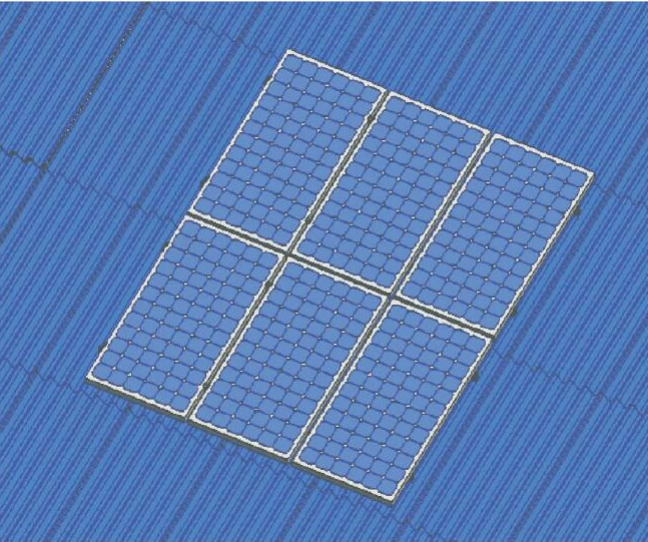


## Mounting Structure GS900 Type

### Pitch Metal Roof Solar Mounting



#### Features

Place of use: Pitch Metal Roof top

Wind load: max. 55m/s

Snow load: max. 1.5kN/m<sup>2</sup>

Solar module: Framed and unframed

Module orientation: Vertical or horizontal

Roof Angle: 0-60°

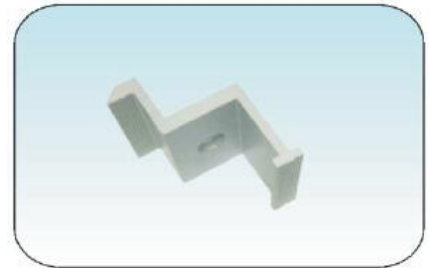
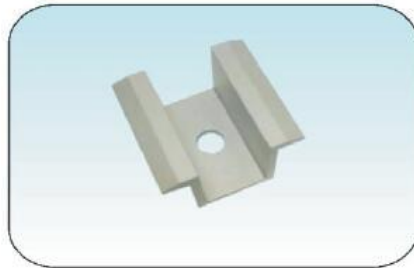
Surface treatment: Stainless steel ,Anodized Aluminum

Material: Stainless steel SUS304, Aluminum 6063-T5

Standard: Suit for EU, AU, US standard

Warranty: 10years on materials

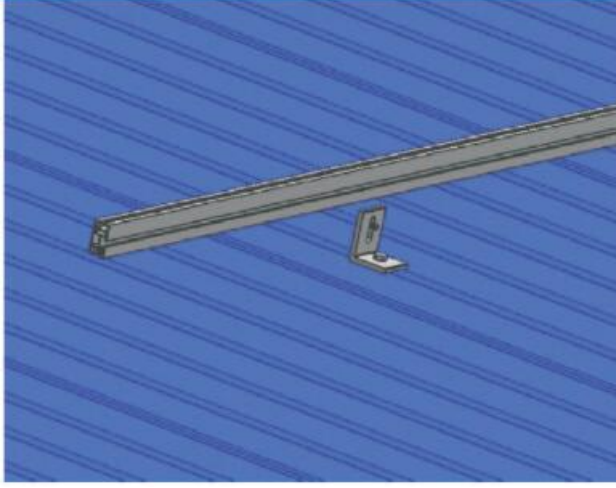
### Components



## Install Procedure

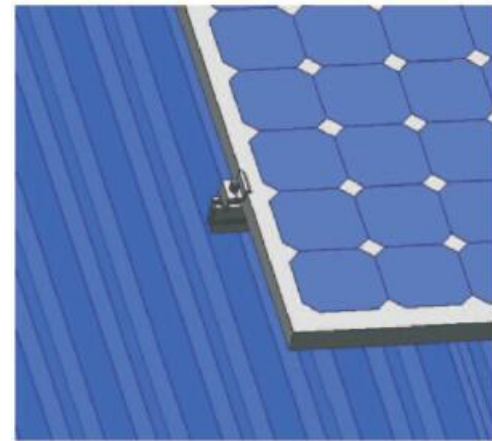
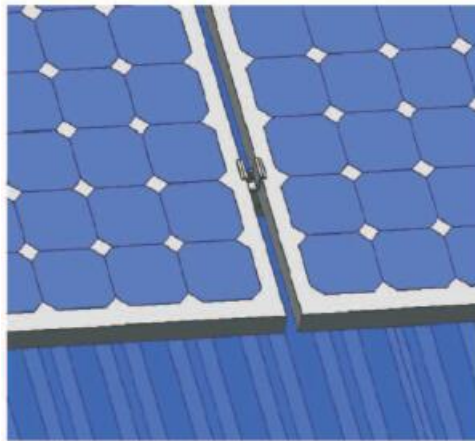
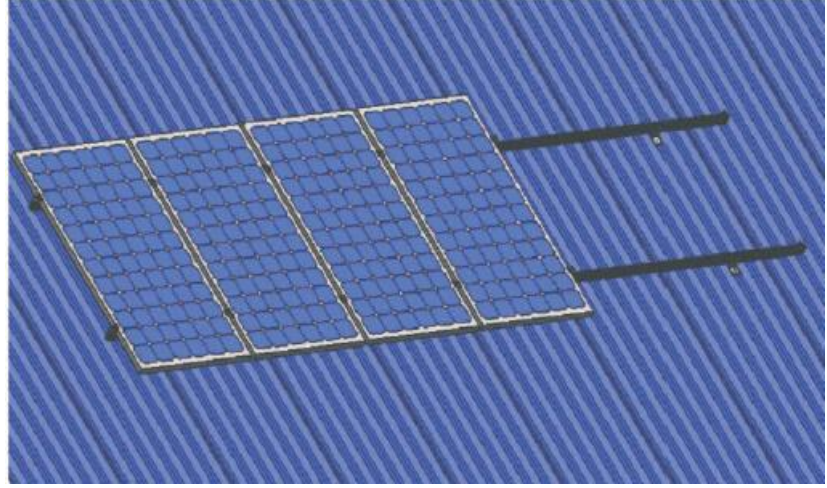
### *Step 1:*

Fix L fee on the roof with tapping screws as below:



### *Step 2:*

Install solar panel with solar clamps and T bolts, as below



## Application

