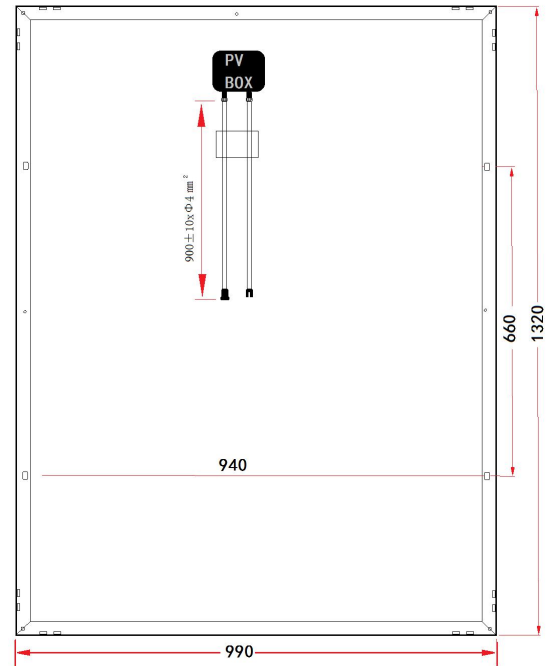
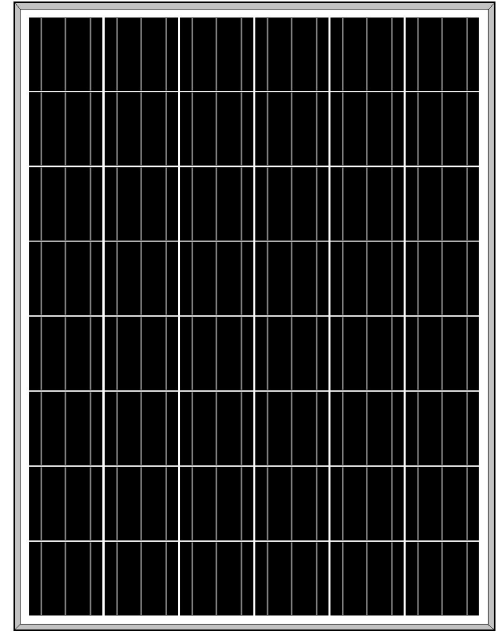


Polycrystalline Solar Panel

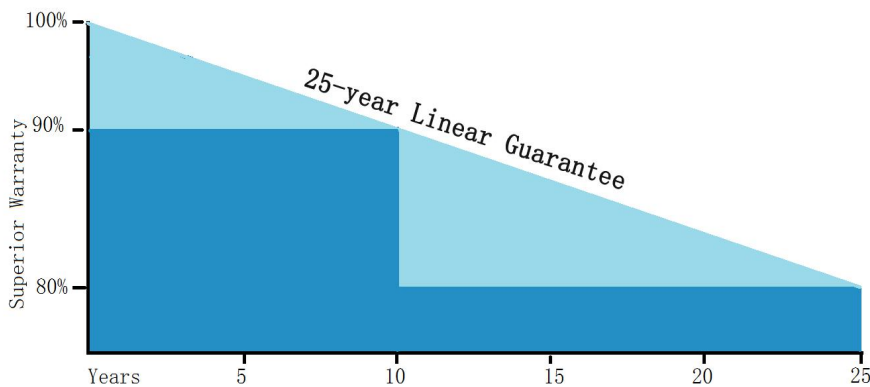
200W-215W

Key Features

- Power output: Positive tolerance, up to 5W
- 100% 2 EL tests before/after laminated
- 10 years warranty for workmanship
- 25 years irrevocable warranty
- Anti-reflective and self-cleaning surface reduces power loss from dirt dust
- Snow loads 5400Pa and wind loads 2400Pa
- High performance and power output in low solar irradiation
- High Salt and ammonia resistance
- TUV, UL CE Standard
ISO9001:2008 ISO14001:2004 OHSAS18001:1999

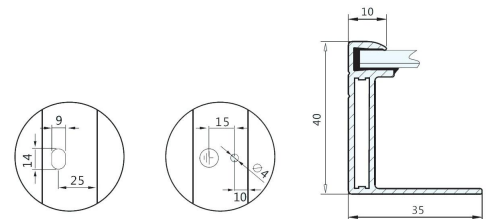


Superior Warranty



25years Linear Power Output Warranty

In the first year of warranty, the peak power of solar panel should be on less than 95% of the rated power. At the end of the 25th year, power of modules should be at least 80% of the rated power.



Assemble Line



Application/Project



MECHANICAL PARAMETERS

Solar cell	Polycrystalline solar cell
Front Cover	3.2mm tempered glass
Back Cover	TPT (Tedlar-PRT-Tedlar)
Encapsulate	EVA(ethylene vinyl acetate)
Frame	Double-layer anodized aluminum alloy
Junction Box	IP65/IP67 compatible
Cables / Connectors	MC4 connectors, 4mm ² x900mm Cable
Dimensions(mm)	1320x990x40
Weight(kg)	16.5

Maximum System Voltage	1000V DC
Operating Temperature	-40℃~85℃
Storage Temperature	-40℃~85℃
Maximum Wind Load	2400Pa
Maximum Snow Load	5400Pa
Application Class	Class A

ELECTRICAL PARAMETERS

Series Number	GSPV-200W (156P)48	GSPV-205W (156P)48	GSPV-210W (156P)48	GSPV-210W (156P)48
Cell Type	Poly			
Max power	200w	205w	210w	215w
Power Tolerance	0~5w			
Nominal Voltage(V)	23.93	24.08	24.15	24.21
Nominal Current(A)	8.36	8.51	8.69	8.88
Open circuit voltage(V)	29.05	29.15	29.25	29.31
Short circuit current(A)	9.08	9.24	9.46	9.73
Size of cell/strip(mm)	156x156			
Number of cell/strip	48(6x8)			
Power Of cell	>4.35w	>4.40w	>4.50w	>4.57w
FF(fill factor)%	75.82	76.11	75.89	75.39
NOCT	45℃±2℃			
Temperature Co-efficient	Isc	+0.049% /℃		
	Voc	-0.340% /℃		
	Pmpp	-0.430% /℃		
STC :Irradiance 1000w/m ² , Module temperature 25℃,AM=1.5				

WARRANTY

10years on material on workmanship
10years with 90% output, 20years with 80% output

Packing Configuration

26pcs per pallet
832pcs per 40HQ