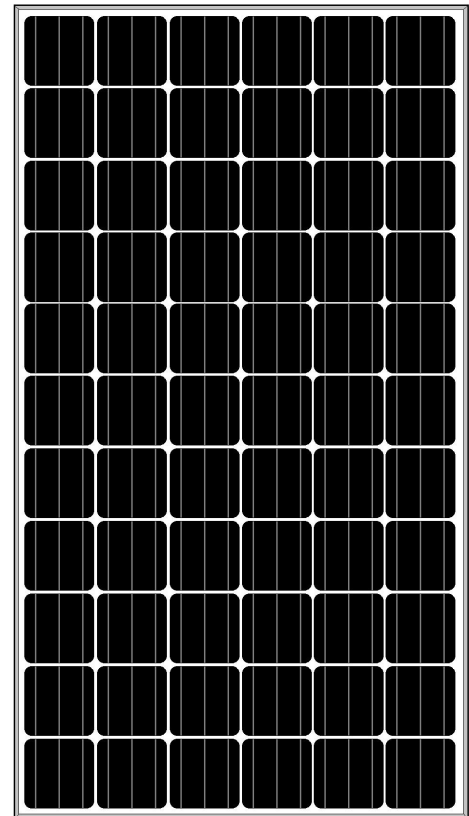


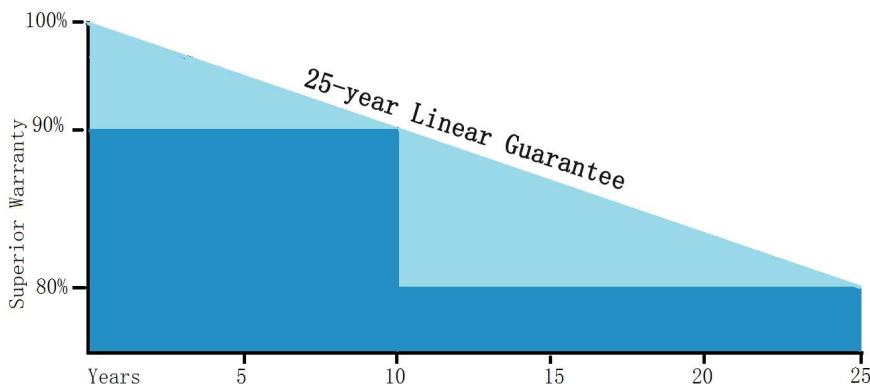
**Monocrystalline Solar Panel
285W-315W**

Key Features

- Power output: Positive tolerance, up to 5W
- 100% 2 EL tests before/after laminated
- 10years warranty for workmanship
- 25years irrevocable warranty
- Anti-reflective and self-cleaning surface reduces power loss from dirt dust
- Snow loads 5400Pa and wind loads 2400Pa
- High performance and power output in low solar irradiation
- High Salt and ammonia resistance
- TUV, UL CE Standard
ISO9001:2008 ISO14001:2004 OHSAS18001:1999

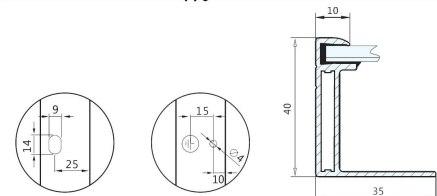
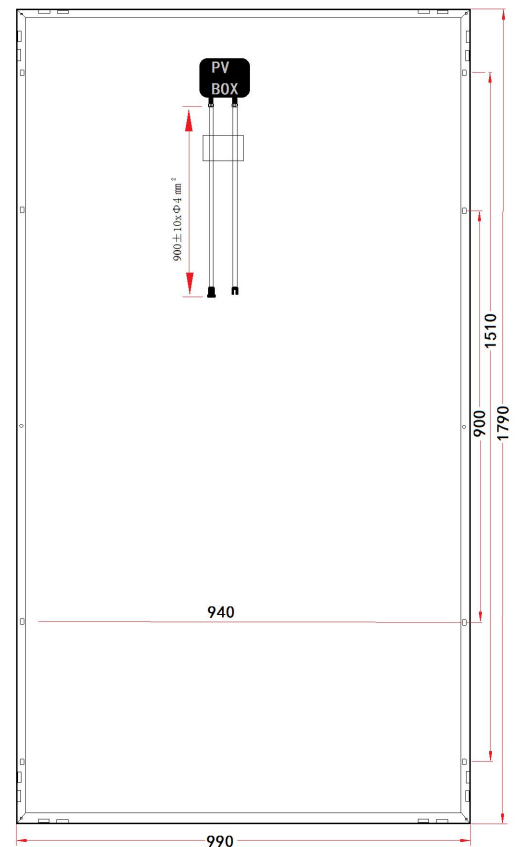


Superior Warranty



25years Linear Power Output Warranty

In the first year of warranty, the peak power of solar panel should be on less than 95% of the rated power. At the end of the 25th year, power of modules should be at least 80% of the rated power.



Assemble Line



Application/Project



MECHANICAL PARAMETERS

Solar cell	Monocrystalline solar cell
Front Cover	3.2mm tempered glass
Back Cover	TPT (Tedlar-PRT-Tedlar)
Encapsulate	EVA(ethylene vinyl acetate)
Frame	Double-layer anodized aluminum alloy
Junction Box	IP65/IP67 compatible
Cables / Connectors	MC4 connectors, 4mm ² x900mm Cable
Dimensions(mm)	1790x990x40
Weight(kg)	20.0

Maximum System Voltage	1000V DC
Operating Temperature	-40℃ ~ 85℃
Storage Temperature	-40℃ ~ 85℃
Maximum Wind Load	2400Pa
Maximum Snow Load	5400Pa
Application Class	Class A

ELECTRICAL PARAMETERS

Series Number	GSPV-285W (156M)66	GSPV-290W (156M)66	GSPV-295W (156M)66	GSPV-300W (156M)66	GSPV-305W (156M)66	GSPV-310W (156M)66	GSPV-315W (156M)66
Cell Type	Mono						
Max power	285w	290w	295w	300w	305w	310w	315w
Power Tolerance	0~5w						
Nominal Voltage(V)	34.38	34.28	34.23	34.18	34.26	34.32	34.35
Nominal Current(A)	8.29	8.46	8.62	8.78	8.90	9.03	9.17
Open circuit voltage(V)	40.5	40.21	40.32	40.29	40.25	40.21	40.25
Short circuit current(A)	9.15	9.31	9.46	9.58	9.69	9.75	9.98
Size of cell/strip(mm)	156x156						
Number of cell/strip	66(6x11)						
Effi. Of cell	>4.41w	>4.48w	>4.56w	>4.63w	>4.72	>4.79w	>4.87w
FF(fill factor)%	76.91	77.46	77.34	77.72	78.20	79.07	78.42
NOCT	45℃±2℃						
Temperature Co-efficient	Isc	+0.049% /℃					
	Voc	-0.340% /℃					
	Pmpp	-0.430% /℃					
STC :Irradiance 1000w/m ² , Module temperature 25℃,AM=1.5							

WARRANTY

10years on material on workmanship
10years with 90% output, 20years with 80% output

Packing Configuration

26pcs per pallet
624pcs per 40HQ