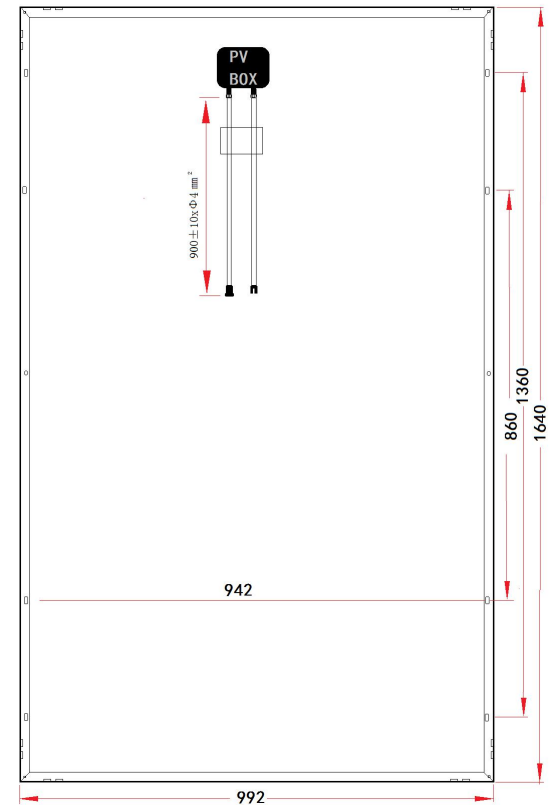
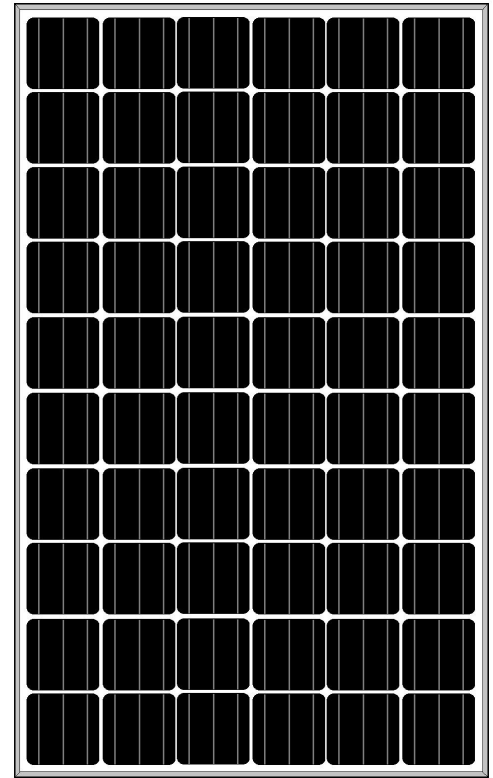


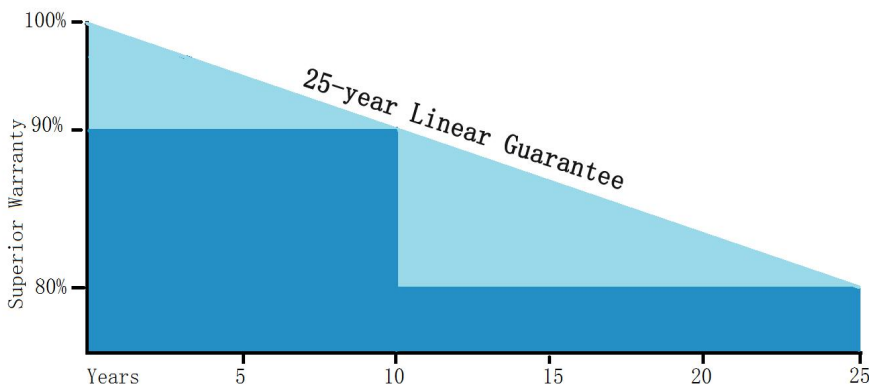
## Monocrystalline Solar Panel 270W-285W, 60Cells

### Key Features

- Power output: Positive tolerance, up to 5W
- 100% 2 EL tests before/after laminated
- 10years warranty for workmanship
- 25years irrevocable warranty
- Anti-reflective and self-cleaning surface reduces power loss from dirt dust
- Snow loads 5400Pa and wind loads 2400Pa
- High performance and power output in low solar irradiation
- High Salt and ammonia resistance
- TUV, UL CE Standard  
ISO9001:2008 ISO14001:2004 OHSAS18001:1999

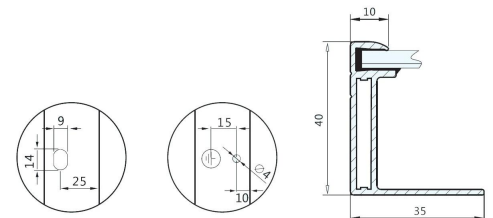


### Superior Warranty



#### 25years Linear Power Output Warranty

In the first year of warranty, the peak power of solar panel should be on less than 95% of the rated power. At the end of the 25<sup>th</sup> year, power of modules should be at least 80% of the rated power.



## Assemble Line



## Application/Project



**MECHANICAL PARAMETERS**

Solar cell	Monocrystalline solar cell
Front Cover	3.2mm tempered glass
Back Cover	TPT (Tedlar-PRT-Tedlar)
Encapsulate	EVA(ethylene vinyl acetate)
Frame	Double-layer anodized aluminum alloy
Junction Box	IP65/IP67 compatible
Cables / Connectors	MC4 connectors, 4mm <sup>2</sup> x900mm Cable
Dimensions(mm)	1640x992x40
Weight(kg)	18.5

Maximum System Voltage	1000V DC
Operating Temperature	-40℃~85℃
Storage Temperature	-40℃~85℃
Maximum Wind Load	2400Pa
Maximum Snow Load	5400Pa
Application Class	Class A

**ELECTRICAL PARAMETERS**

Series Number	GSPV-270W (156M)60	GSPV-275W (156M)60	GSPV-280W (156M)60	GSPV-285W (156M)60
Cell Type	Mono			
Max power	270w	275w	280w	285w
Power Tolerance	0~5w			
Nominal Voltage(V)	31.5	31.8	32.0	32.3
Nominal Current(A)	8.58	8.65	8.74	8.84
Open circuit voltage(V)	38.2	38.5	38.8	38.8
Short circuit current(A)	9.2	9.3	9.4	9.4
Size of cell/strip(mm)	156.7x156.7			
Number of cell/strip	60(6x10)			
Effi. Of cell	>4.5w	>4.58w	>4.67w	>4.75w
FF(fill factor)%	76.9	77.0	77.1	77.3
NOCT	45℃±2℃			
Temperature Co-efficient	Isc	+0.049% /℃		
	Voc	-0.317% /℃		
	Pmpp	-0.430% /℃		
STC :Irradiance 1000w/m <sup>2</sup> , Module temperature 25℃,AM=1.5				

**WARRANTY**

10years on material on workmanship
10years with 90% output, 20years with 80% output

**Packing Configuration**

26pcs per pallet
728pcs per 40HQ