

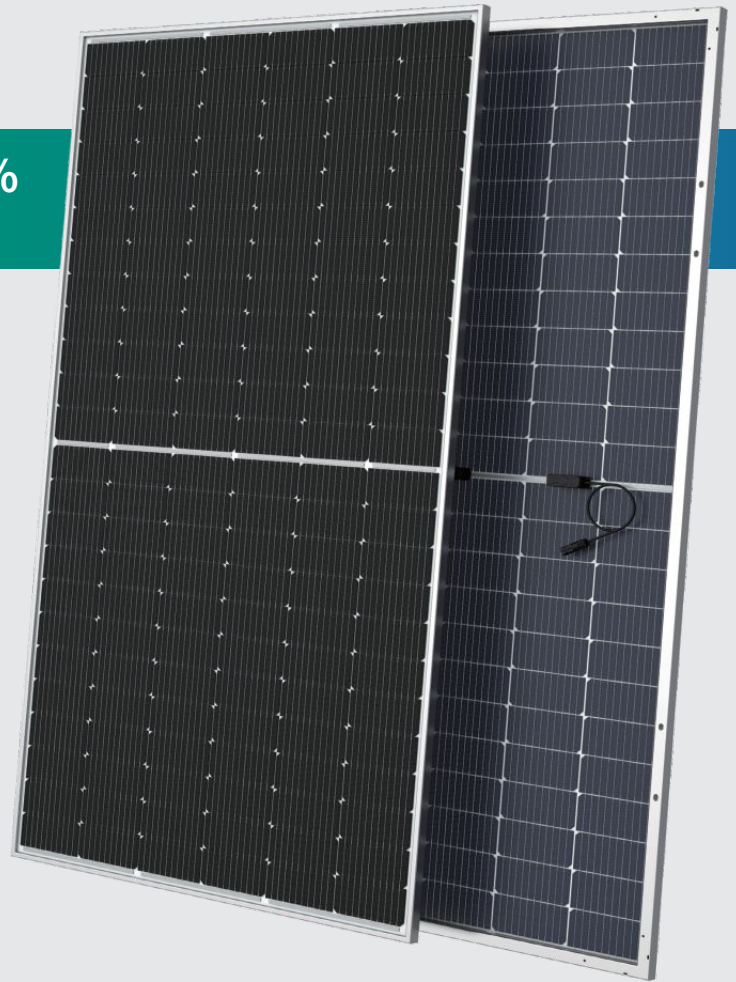
Mono-crystalline Bifacial Solar Module (72Cells)

CEC6-72MDHV

530~555W **20.5%~21.5%**
POWER OUTPUT RANGE MODULE EFFICIENCY

PRODUCT CHARACTERISTICS

- ◆ Light weight, easy to install, high cost performance, high efficiency, Low LCOE, double sided power generation
- ◆ Module certified to withstand extreme wind (2400 Pascal) and snow loads (5400 Pascal)
- ◆ Guaranteed output: 0~+5W
- ◆ Excellent performance in weak light condition, such as cloudy, morning and sunset
- ◆ Independently certified by international certification authorities, including IEC61215, IEC61730, CE



LINEAR WARRANTY AND CERTIFICATION

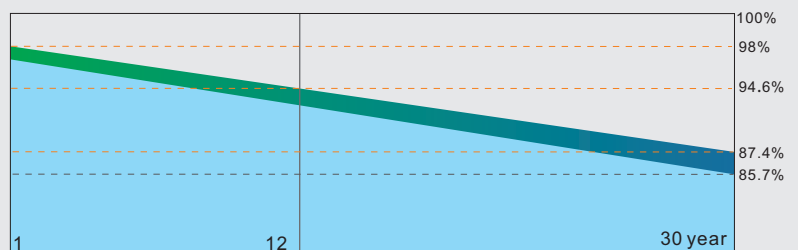


1st YEAR 1st year Power output not less than 99%

12 YEAR Warranty for product materials and processes within 12 years

12 YEAR Power output not less than 94.6% within 12 years

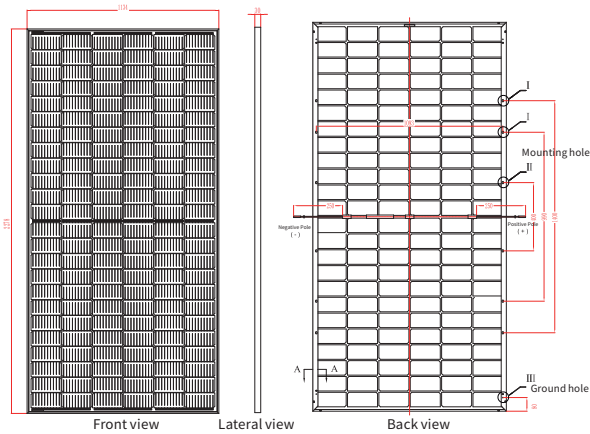
30 YEAR Power output not less than 87.4% within 25 years



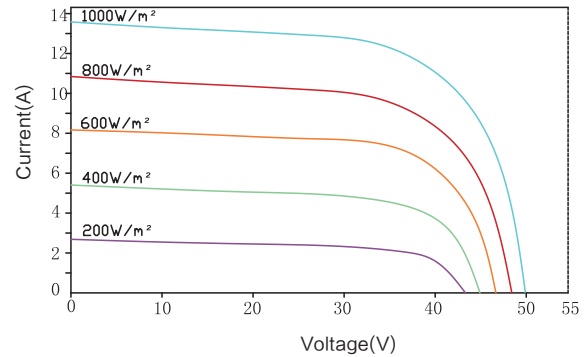
■ CECEP Solar linear power warranty
■ Normal module linear power warranty

QUALITY OF CENTRAL ENTERPRISE SERVICE GUARANTEE

Assembly Drawing



I-V Curve (540W)



Limit Parameters

Operating temperature	-40°C to +85°C
Maximum fuse current rating	25A

Physical Parameter

Dimension	2278*1134*30mm
Mounting hole size	400*1093,990*1093,1400*1093mm
Cable Length	250mm; Customizable
Weight	32.6Kg

Mechanical Characteristics

Cell type	182×91mm monocrystalline silicon solar cells, 144 cells (6×24)
Glass	2.0 mm thick low-iron tempered glass with high light transmittance
Junction Box	IP Grade: IP68

Temperature Rating

Nominal Module Operating Temperature (NMOT)	42°C ± 2°C
Maximum Power (Pmax) Temperature Coefficient (δ (%/°C))	-0.34
Open-circuit voltage (Voc) Temperature coefficient (β (%/°C))	-0.26
Short circuit current (Isc) Temperature coefficient (α (%/°C))	0.05

Mode of Packing

40' HQ Container	Pieces per pallet	36 pcs/pallet
	pallets per container	20 pallets/40' HQ
	Pieces per container	720pcs/40' HQ

Parameters of Module

Electrical parameters (Standard test condition)	CEC6-72-530MDHV	CEC6-72-535MDHV	CEC6-72-540MDHV	CEC6-72-545MDHV	CEC6-72-550MDHV	CEC6-72-555MDHV
Maximum power-Pmax(Wp)	530	535	540	545	550	555
Maximum operating voltage-Vmp(V)	41.77	42.01	42.23	42.45	42.67	42.90
Maximum operating current-Imp(A)	12.69	12.74	12.79	12.84	12.89	12.94
Open-circuit voltage -Voc(V)	49.65	49.78	49.91	50.01	50.14	50.26
Short-circuit current-Isc(A)	13.45	13.5	13.55	13.61	13.66	13.71
Maximum system voltage-Vdc(V)	1500	1500	1500	1500	1500	1500
Module efficiency(%)	20.5%	20.7%	20.9%	21.1%	21.3%	21.5%
Power tolerance(W)	0/+5W	0/+5W	0/+5W	0/+5W	0/+5W	0/+5W

Measured values under STC (temperature 25°C, air mass AM1.5, irradiance 1000W/m²)

Different back-side power gain (for example 535W)

Power Gain	5%	10%	15%	20%	25%
Max Power(Wp)	562	589	615	642	669
Max-Power Voltage Vmp(V)	42.01	42.01	42.01	42.01	42.01
Max-Power Current Imp(A)	13.38	14.01	14.65	15.29	15.93
Open-Circuit Voltage Voc(V)	49.78	49.78	49.78	49.78	49.78
Short-Circuit Current Isc(A)	14.18	14.85	15.53	16.20	16.88
Module efficiency	21.7%	22.8%	23.8%	24.8%	25.9%



Make Power Generation More Green

No.9,Beishan Road,New District,Zhenjiang, Jiangsu,China 212132

Web: www.cecepsolar.com

