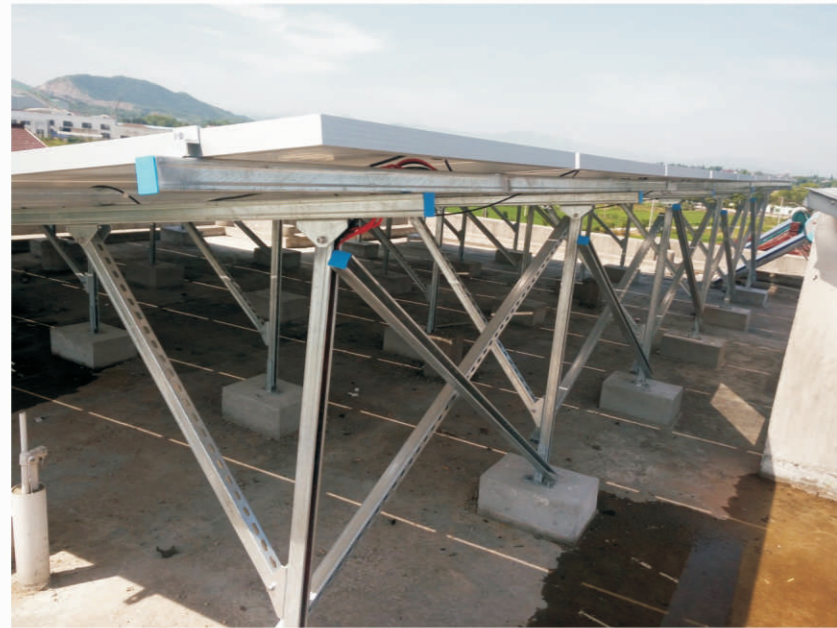


全钢支架/SolaStrut SolarMatrix-II

The Cost-Effective Ground Mount Solution for Large Scale Project



WH-FC-SM-II



前立柱
SolarMatrix-II Front Column

Hot dip galvanized Q235

WH-RC-SM-II



后立柱
SolarMatrix-II Rear Column

Hot dip galvanized Q235

WH-SM-II



斜拉
SolarMatrix-II Fixed Tie Link

Hot dip galvanized Q235

WH-MB-SM-II



主梁
SolarMatrix-II Main Beam

Hot dip galvanized Q235

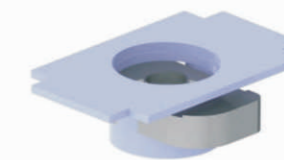
WH-ST-SM-II



导轨
SolarMatrix-II Stringer

Hot dip galvanized Q235

WH-MB-SM-II



锁扣螺母
SolarMatrix-II Locking Clamp

Hot dip galvanized Q235

WH-IC-SM-II



中压
SolarMatrix-II Inter Clamp

Anodised aluminum
M8 A2-70 Hex Socket Head Bolt
35,40,45,50mm

WH-EC-SM-II



边压
SolarMatrix-II End Clamp

Anodised aluminum
M8 A2-70 Hex Socket Head Bolt
35,40,45,50mm

技术参数 Technical Features	
Installation Site:	Open field
Foundation:	Concrete Base or ground screw
System Tilt Angle:	0~40 degree
Wind Load:	41.7m/s
Snow Load:	70cm
Applicable Module:	Framed or frameless
Module Orientation:	Landscape or portrait
Standards:	JIS C8955:2012 DIN1056 IBC 2008 BS EN 1991-1-1-4:2006
Material:	Hot Dip galvanized Q235,80µm
Service Life:	25 Years

支架特点 Key Benefits	
安装方便 Easy Installation	预先组装，降低施工时间和成本 Planning and highly pre-assembled system making the solution time and cost effective
良好的通用性 Versatile Application	适合安装在平地、水泥顶、阳光房等 The grounding of open area plants on concrete foundations or ground screw for residential through to utility scale
兼容性 Great Compatibility	这个设计与市场上的大多数组件边框匹配，具有良好的兼容性 Designed as a universal PV mounting system, SolaStrut SolarMatrix-II is compatible with most of the framed PV modules on the market.
质量高 High Quality	严格控制原材料和产品品质，保证产品的最大强度和寿命 Strict quality control over materials and finished products ensure optimum strength and long life for your installation.
质保十年 10 Years Warranty	Weihang Solar provides a 10 years product warranty for your peace of mind.