

地面铝支架/SolaStrut Solar Matrix-I

The Most Effective Ground Mount Solution for Residential through to Utility Scale



技术参数 Technical Features	
Installation Site:	Open field
Foundation:	Concrete Base or ground screw
System Tilt Angle:	Generally 10-45 degree and other special angles
Wind Load:	41.7m/s
Snow Load:	70cm
Applicable Module:	Framed or frameless
Module Orientation:	Landscape or portrait
Standards:	AS/NZS 1173 JIS C8955:2014 DIN1057 IBC 2008 BS EN 1992-1-1-4:2006
Material:	Anodised aluminum
Service Life:	25 Years

支架特点 Key Benefits	
安装方便 Easy Installation	预先组装，降低施工时间和成本 Planning and highly pre-assembled system making the solution time and cost effective
良好的通用性 Versatile Application	适合安装在平地、水泥顶、阳光房等 The grounding of open area plants on concrete foundations or ground screw for residential through to utility scale
兼容性 Great Compatibility	这个设计与市场上的大多数组件边框匹配，具有良好的兼容性 Designed as a universal PV mounting system, SolaStrut SolarMatrix-I is compatible with most of the framed PV modules on the market.
质量高 High Quality	严格控制原材料和产品品质，保证产品的最大强度和寿命 Strict quality control over materials and finished products ensure optimum strength and long life for your installation.
质保十年 10 Years Warranty	Weihang Solar provides a 10 years product warranty for your peace of mind.

WH-FC-SM-I



前立柱
SolarMatrix-II Front Column

- Anodised aluminum
- Pre-assembled
- Flexible

WH-RC-SM-I



后立柱
SolarMatrix-II Rear Column

- Anodised aluminum
- Pre-assembled
- Flexible

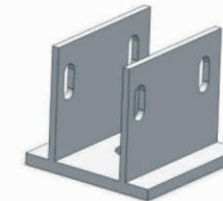
WH-CDT-001



斜拉
SolarMatrix-I Diagonal Tie

- Anodised aluminum
- Thick aluminum wall

WH-FD-001



底座
SolarMatrix-I Column Base

- Anodised aluminum
- 100mm x 100mm or 100mm x 200mm

WH-B-001



主梁
SolarMatrix-I Main Beam

- Anodised aluminum
- Customized Length

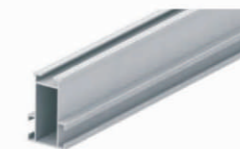
WH-BC-001



横梁连接件
SolarMatrix-I Beam Splice

- Anodised aluminum
- Standard Length: 400mm

WH-R-001



导轨
SolarMatrix-I Rail

- Anodised aluminum
- Standard Length: 3100mm or 4100mm

WH-LC-SM-1



卡边
SolarMatrix-I Locking Clamp

- Anodised aluminum
- Universal

WH-IC-SM-I



中压
SolarMatrix-I Inter Clamp

- Anodised aluminum
- Flexible

WH-EC-SM-I



边压
SolarMatrix-I End Clamp

- Anodised aluminum
- Flexible

WH-BE-SM-I



横梁端盖
SolarMatrix-I Beam End Cap

- ABS

WH-RE-SM-I



导轨端盖
SolarMatrix-I Rail EndCap

- ABS