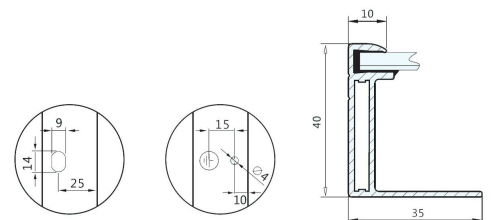
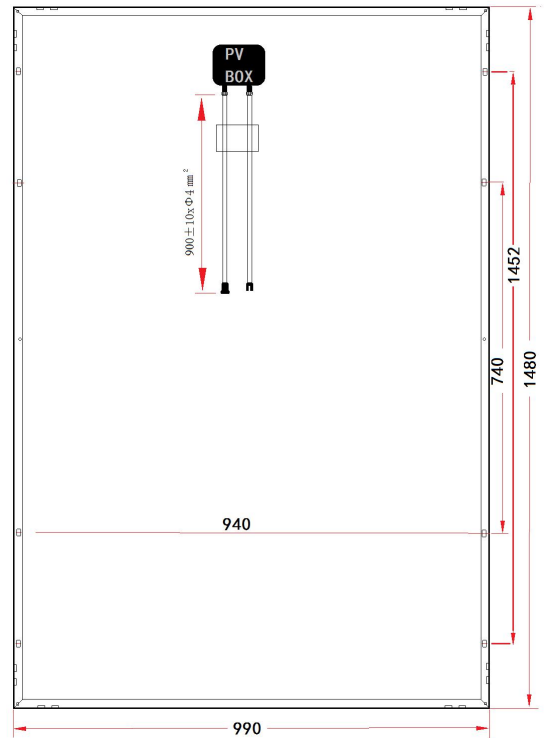
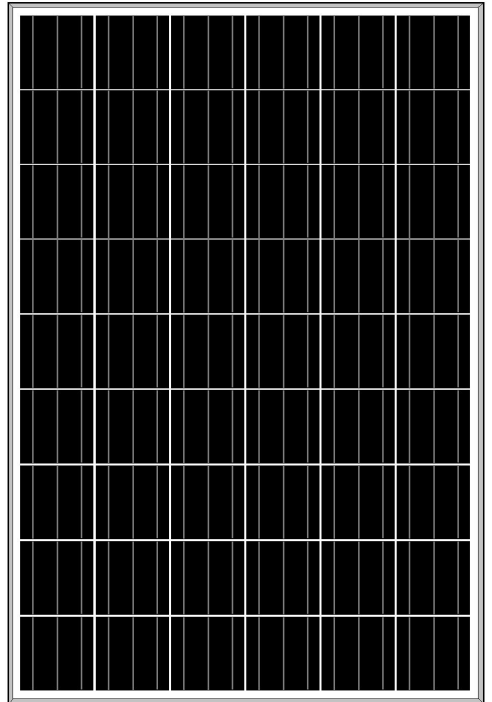


Polycrystalline Solar Panel

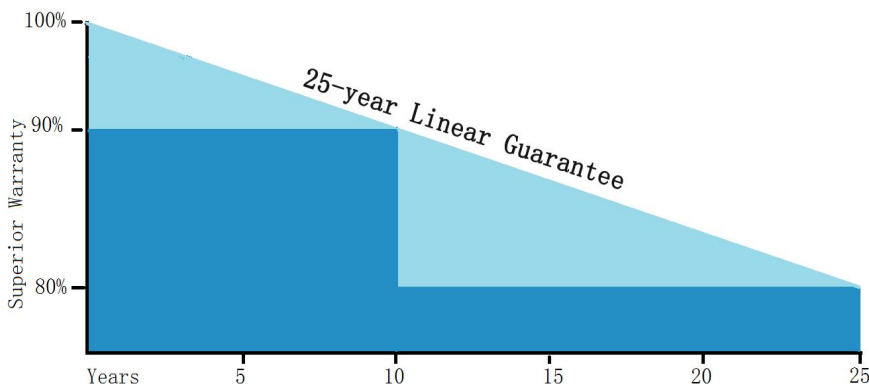
225W-235W



Key Features

- Power output: Positive tolerance, up to 5W
- 100% 2 EL tests before/after laminated
- 10 years warranty for workmanship
- 25 years irrevocable warranty
- Anti-reflective and self-cleaning surface reduces power loss from dirt dust
- Snow loads 5400Pa and wind loads 2400Pa
- High performance and power output in low solar irradiation
- High Salt and ammonia resistance
- TUV, UL CE Standard
ISO9001:2008 ISO14001:2004 OHSAS18001:1999

Superior Warranty



25years Linear Power Output Warranty

In the first year of warranty, the peak power of solar panel should be on less than 95% of the rated power. At the end of the 25th year, power of modules should be at least 80% of the rated power.

Assemble Line



Application/Project



MECHANICAL PARAMETERS

| | |
|---------------------|---|
| Solar cell | Polycrystalline solar cell |
| Front Cover | 3.2mm tempered glass |
| Back Cover | TPT (Tedlar-PRT-Tedlar) |
| Encapsulate | EVA(ethylene vinyl acetate) |
| Frame | Double-layer anodized aluminum alloy |
| Junction Box | IP65/IP67 compatible |
| Cables / Connectors | MC4 connectors, 4mm ² x900mm Cable |
| Dimensions(mm) | 1480x990x40 |
| Weight(kg) | 17.5 |

| | |
|------------------------|------------|
| Maximum System Voltage | 1000V DC |
| Operating Temperature | -40℃ ~ 85℃ |
| Storage Temperature | -40℃ ~ 85℃ |
| Maximum Wind Load | 2400Pa |
| Maximum Snow Load | 5400Pa |
| Application Class | Class A |

ELECTRICAL PARAMETERS

| Series Number | GSPV-225W (156P)54 | GSPV-230W (156P)54 | GSPV-235W (156P)54 |
|--|-----------------------|-----------------------|-----------------------|
| Cell Type | Poly | | |
| Max power | 225w | 230w | 235w |
| Power Tolerance | 0~5w | | |
| Nominal Voltage(V) | 27.82 | 27.69 | 27.98 |
| Nominal Current(A) | 8.09 | 8.31 | 8.40 |
| Open circuit voltage(V) | 33.91 | 33.81 | 34.03 |
| Short circuit current(A) | 8.63 | 8.86 | 8.95 |
| Size of cell/strip(mm) | 156x156 | | |
| Number of cell/strip | 54(6x9) | | |
| Effi. Of cell | >4.35w | >4.45w | >4.50w |
| FF(fill factor)% | 76.88 | 76.78 | 77.15 |
| NOCT | 45℃±2℃ | | |
| Temperature Co-efficient | Isc | +0.049% /℃ | |
| | Voc | -0.340% /℃ | |
| | Pmpp | -0.430% /℃ | |
| STC :Irradiance 1000w/m ² , Module temperature 25℃,AM=1.5 | | | |

WARRANTY

| |
|--|
| 10years on material on workmanship |
| 10years with 90% output, 20years with 80% output |

Packing Configuration

| |
|------------------|
| 26pcs per pallet |
| 832pcs per 40HQ |