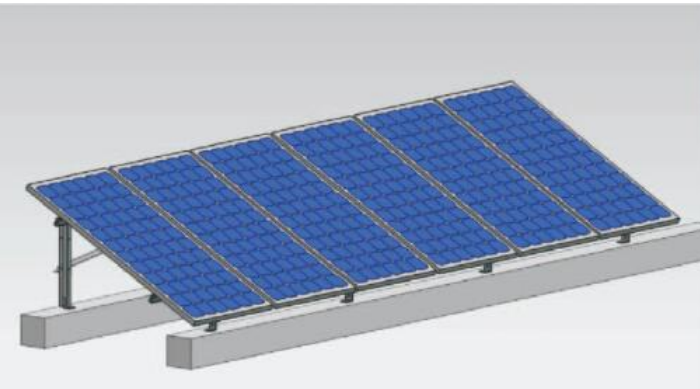


## Mounting Structure GS800 Type

### Flat Roof Solar Mounting



#### Features

Place of use: Flat Roof top or Ground

Wind load: max. 55m/s

Snow load: max. 1.5kN/m<sup>2</sup>

Solar module: Framed and unframed

Module orientation: Vertical or horizontal

Roof Angle: 5-60°

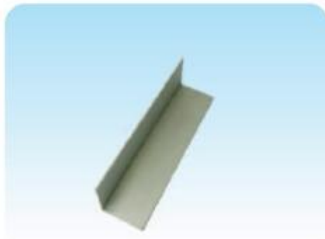
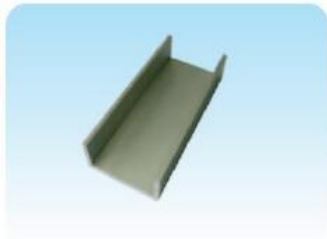
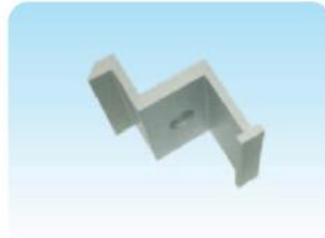
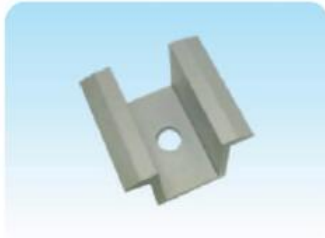
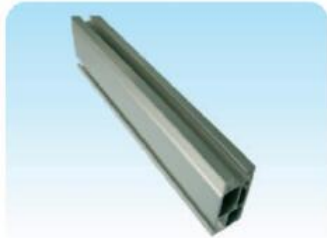
Surface treatment: Stainless steel , Anodized Aluminum

Material: Stainless steel SUS304, Aluminum 6063-T5

Standard: Suit for EU, AU, US standard

Warranty: 10years on materials

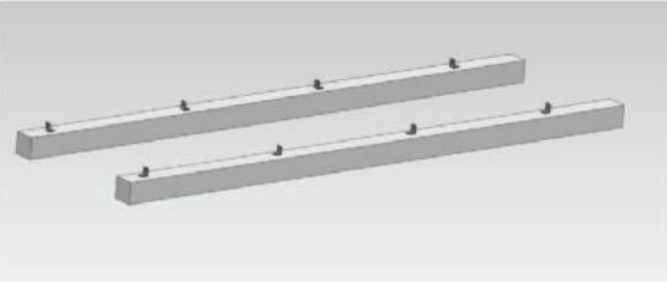
### Components



## Install Procedure

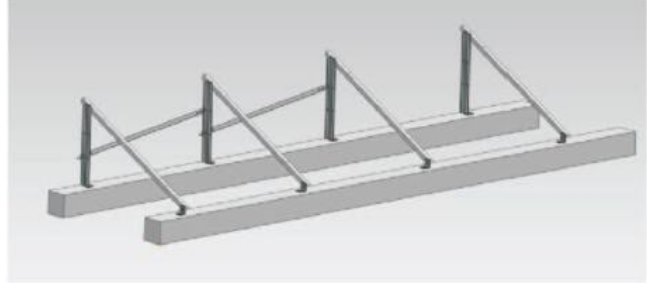
### *Step 1:*

Fix L feet on the concrete ground with expansion bolts, as below:



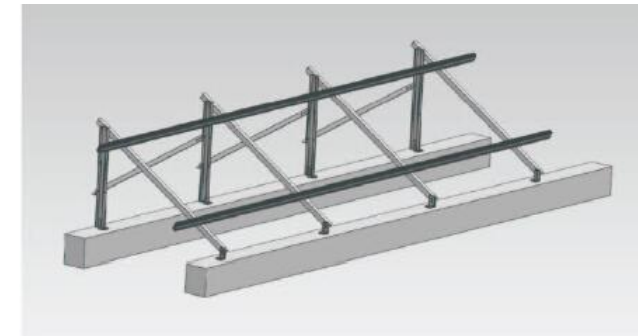
### *Step 2:*

Install support beam and cross beam on the L feet with hexagon bolts, as below



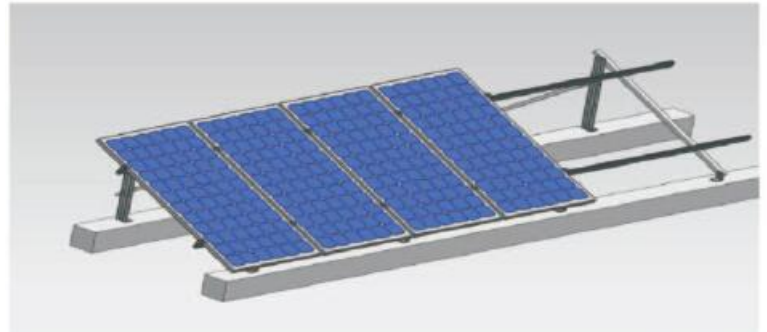
### *Step 3:*

Install rail on the cross beam with T bolts, as below:



### *Step 4:*

Install rail on the cross beam with T bolts, as below:



## Application

