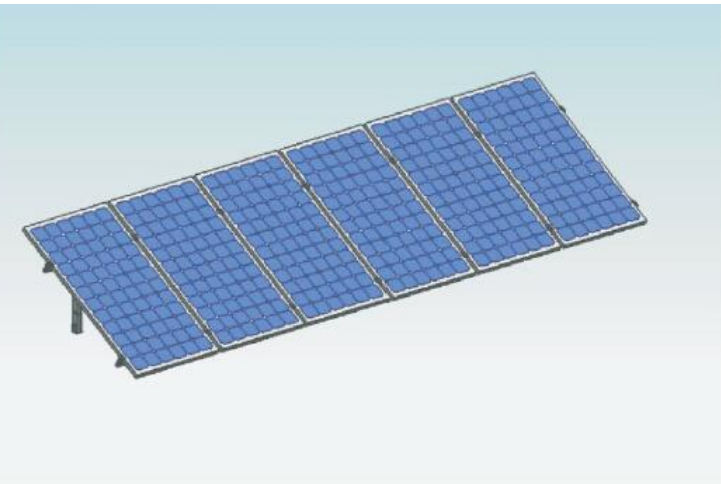


## Mounting Structure GS820 Type

### Flat Roof Solar Mounting



#### Features

Place of use: Flat Roof top or Ground

Wind load: max. 55m/s

Snow load: max. 1.5kN/m<sup>2</sup>

Solar module: Framed and unframed

Module orientation: Vertical or horizontal

Roof Angle: 5-60°

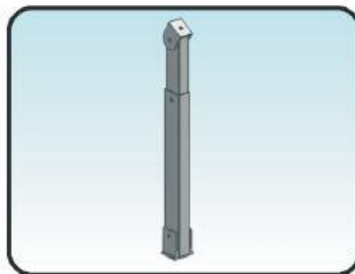
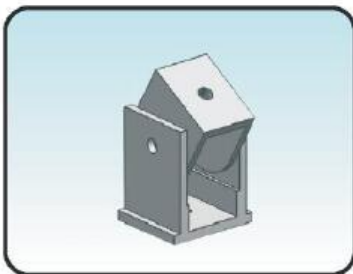
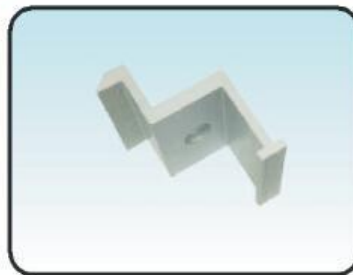
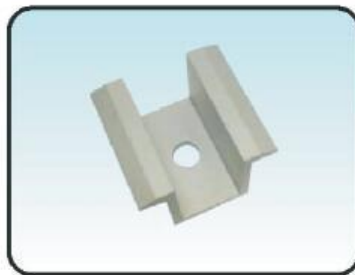
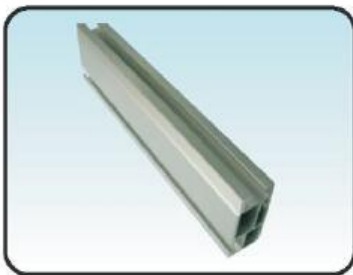
Surface treatment: Stainless steel , Anodized Aluminum

Material: Stainless steel SUS304, Aluminum 6063-T5

Standard: Suit for EU, AU, US standard

Warranty: 10years on materials

### Components



## Install Procedure

### ***Step 1:***

Install base on the concrete ground with expansion bolts, as below:



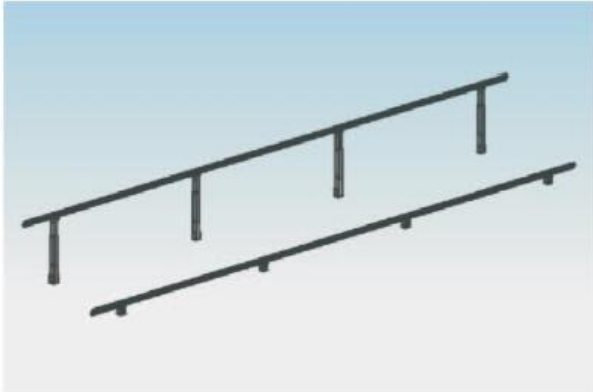
### ***Step 2:***

Install adjustable beam on the concrete ground with expansion bolts, as below



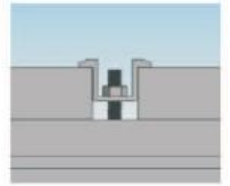
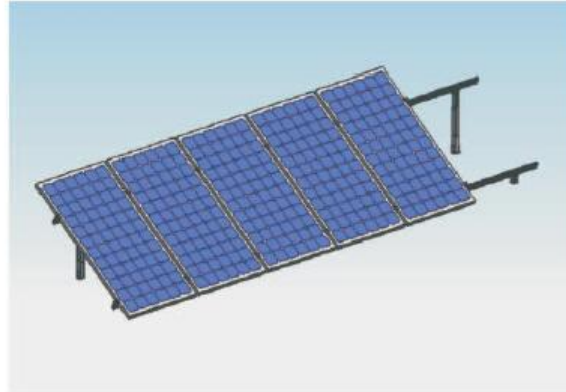
### ***Step 3:***

Install rail on the base and adjustable beam with T bolts, as below:



### ***Step 4:***

Install solar panel with solar clamps and T bolts, as below:



## Application

