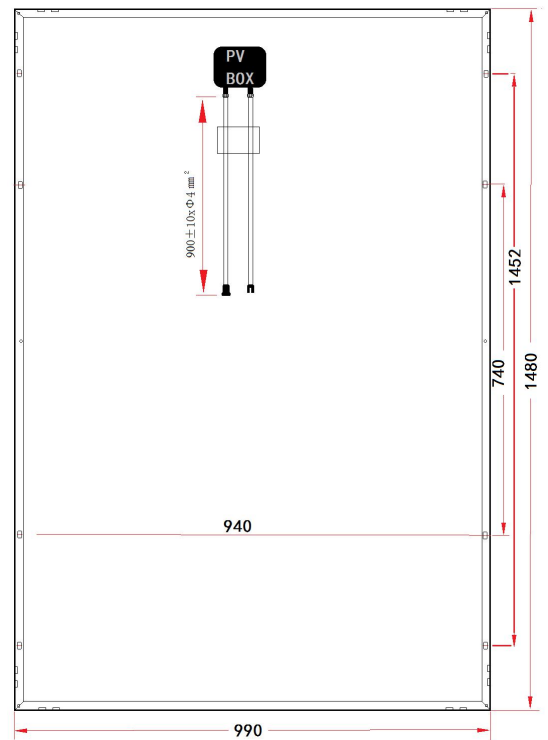
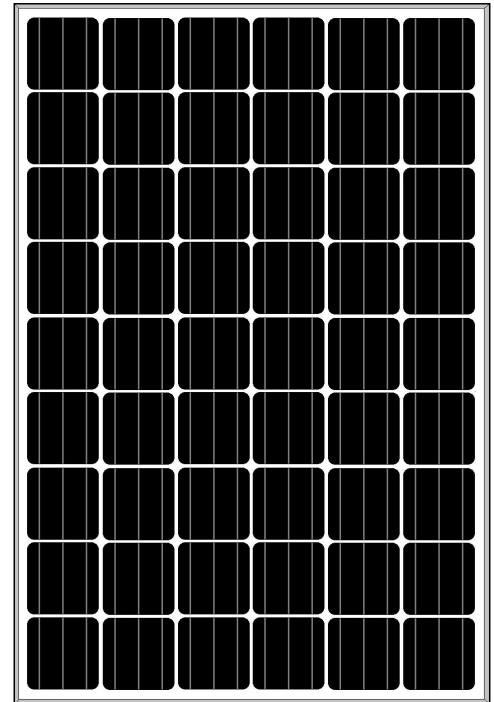


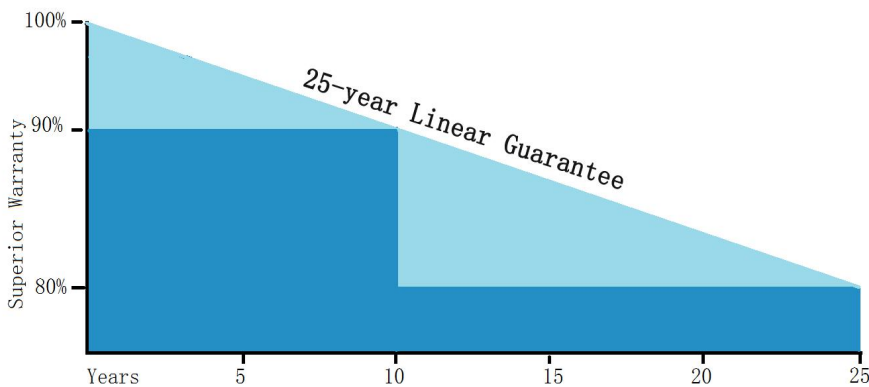
## Monocrystalline Solar Panel 235W-255W

### Key Features

- Power output: Positive tolerance, up to 5W
- 100% 2 EL tests before/after laminated
- 10 years warranty for workmanship
- 25 years irrevocable warranty
- Anti-reflective and self-cleaning surface reduces power loss from dirt dust
- Snow loads 5400Pa and wind loads 2400Pa
- High performance and power output in low solar irradiation
- High Salt and ammonia resistance
- TUV, UL CE Standard  
ISO9001:2008 ISO14001:2004 OHSAS18001:1999

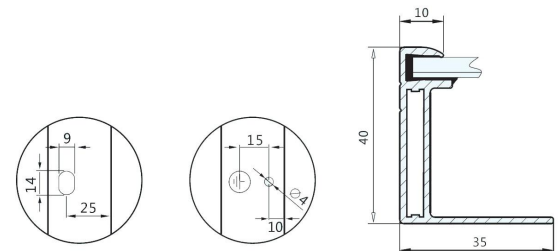


### Superior Warranty



#### 25years Linear Power Output Warranty

In the first year of warranty, the peak power of solar panel should be on less than 95% of the rated power. At the end of the 25<sup>th</sup> year, power of modules should be at least 80% of the rated power.



## Assemble Line



## Application/Project



**MECHANICAL PARAMETERS**

Solar cell	Monocrystalline solar cell
Front Cover	3.2mm tempered glass
Back Cover	TPT (Tedlar-PRT-Tedlar)
Encapsulate	EVA(ethylene vinyl acetate)
Frame	Double-layer anodized aluminum alloy
Junction Box	IP65/IP67 compatible
Cables / Connectors	MC4 connectors, 4mm <sup>2</sup> x900mm Cable
Dimensions(mm)	1480x990x40
Weight(kg)	17.5

Maximum System Voltage	1000V DC
Operating Temperature	-40℃~85℃
Storage Temperature	-40℃~85℃
Maximum Wind Load	2400Pa
Maximum Snow Load	5400Pa
Application Class	Class A

**ELECTRICAL PARAMETERS**

Series Number	GSPV-235W (156M)54	GSPV-240W (156M)54	GSPV-245W (156M)54	GSPV-250W (156M)54	GSPV-255W (156M)54
Cell Type	Mono				
Max power	235w	240w	245w	250w	255w
Power Tolerance	0~5w				
Nominal Voltage(V)	28.35	28.18	28.15	28.13	28.16
Nominal Current(A)	8.29	8.52	8.70	8.89	9.06
Open circuit voltage(V)	34.32	34.17	34.29	34.25	34.17
Short circuit current(A)	8.84	9.07	9.25	9.34	9.53
Size of cell/strip(mm)	156x156				
Number of cell/strip	54(6x9)				
Power Of cell	>4.44w	>4.53w	>4.63w	>4.72w	>4.82w
FF(fill factor)%	77.46	77.47	77.24	78.15	78.31
NOCT	45℃±2℃				
Temperature Co-efficient	Isc	+0.049% /℃			
	Voc	-0.340% /℃			
	Pmpp	-0.430% /℃			
STC :Irradiance 1000w/m <sup>2</sup> , Module temperature 25℃,AM=1.5					

**WARRANTY**

10years on material on workmanship
10years with 90% output, 20years with 80% output

**Packing Configuration**

26pcs per pallet
832pcs per 40HQ