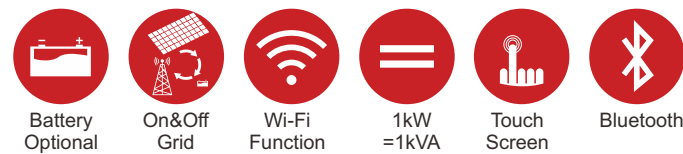


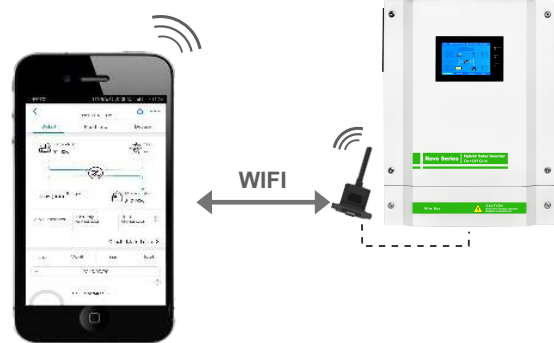


GVT-II Hybrid Energy Storage Inverter

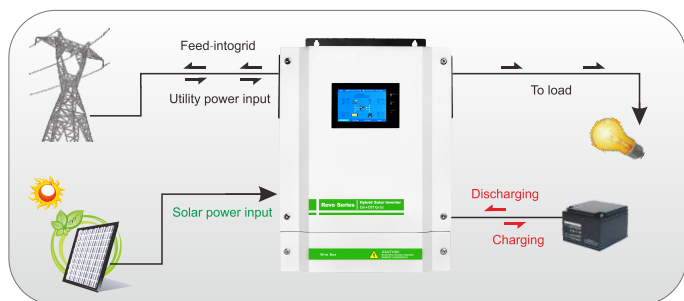


Key Features

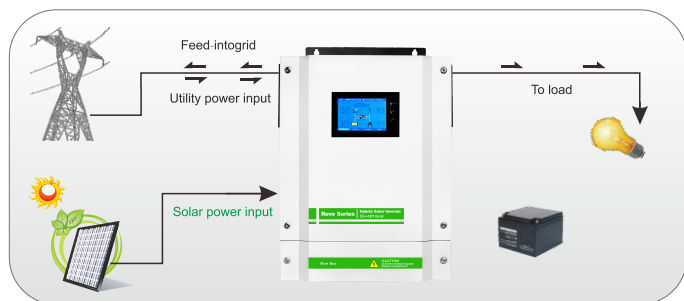
- Touch screen display
- PV and utility power the load at the same time (can be set)
- Output power factor PF=1.0
- On&Off Grid with energy storage
- Energy generated record, load record, history information and fault record.
- Structure with dust filter.
- AC charging start and stop time setting.
- External Wi-Fi device optional.
- Parallel operation up to 9 units .
- Connected with battery optional.
- Wide PV input range 120-450VDC.
- Independent CPU.
- MAX PV Array power 5500W.
- Solar and Utility supply power to the load When solar power is not sufficient to load.
- The CT sensor will monitor the power consumption of the system and will make sure no excess PV power is delivered to the Grid.



Hybrid Operation

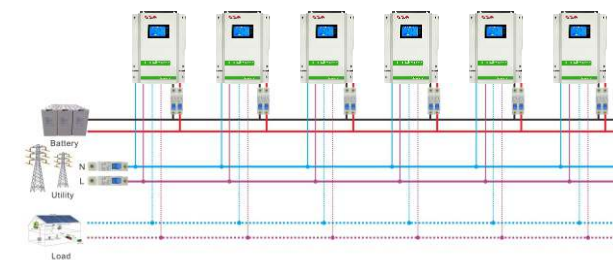


With battery connected

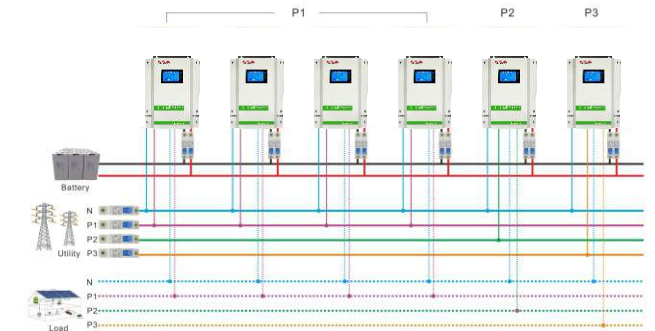


Without battery connected

■ Single phase output up to 49.5 KW using 9 units



■ Three phase output using either 3 units(16.5KW) or max 9 units(49.5KW)



Wall Mounted Integrated Solar Power Inverter Technical Specification Built-in MPPT Solar Controller

Model	GVT II 3k-24	GVT II 3.2k-48	GVT II 5.5k-48
Max PV Array Power		5000W	
Rated Output Power	3000W	3200W	5500W
MPPT Range @ Operating Voltage		120-450VDC	
GRID-TIE OPERATION			
GRID OUTPUT(AC)			
Nominal Output Voltage		220/230/240VAC	
Output Voltage Range		184-265VAC	
Nominal Output Current	13.6A/13.0A/12.5A	14.5A/13.9A/13.3A	25A/23.9A/22.9A
Efficiency		Up to 93.5%	
OFF-GRID, HYBRID OPERATION			
GRID INPUT			
Acceptable Input Voltage Range		120-280VAC or 170-280VAC	
Frequency Range		50Hz/60Hz(Auto sensing)	
BATTERY MODE OUTPUT			
Nominal Output Voltage		220/230/240VAC	
Output Wave form		Pure sine wave	
BATTERY & CHARGER			
Nominal DC Voltage	24VDC		48VDC
Maximum AC Charge Current		60A	
Maximum Charge Current		90A	
Emergency output power			
Maximum output Power	3000W	3200W	5500W
Surge Power	6000W	6400W	11000W
Automatic Transfer Time		<10ms	
GENERAL			
INTERFACE			
Parallel Function		Yes	
Communication		USB or RS232/WIFI/Generator Dry-Contact	
ENVIRONMENT			
Humidity		0~90% RH (No Condensing)	
Operating Temperature		0 to 50 °C	
Net Weight(KG)	11.75		11.9
Rough Weight(KG)	12.75		13.1
Dimension(W*D*H)mm		345x476x133.2	