

BC MONO

430 - 450 Watt Total Black



Key features

- ✔ Passed IEC 5400 Pa mechanical loading test.
- ✔ The modules can withstand high wind-pressure, snow loads and extreme temperatures.
- ✔ Our high performing modules have an industry low tolerance of 0±5%.
- ✔ Our solar cells offer high conversion efficiency to ensure the highest quality.
- ✔ Highest quality with our cells.

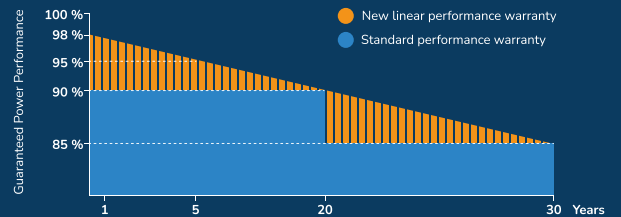


Quality and safety

- ✔ Industry leading power output warranty
20 years / 90%
30 years / 85,2%
- ✔ 30-year warranty on materials & workmanship
- ✔ Fire test: Class 1



Premium performance warranty



Applications



On-grid residential roof-tops



On-grid commercial-industrial roof-tops

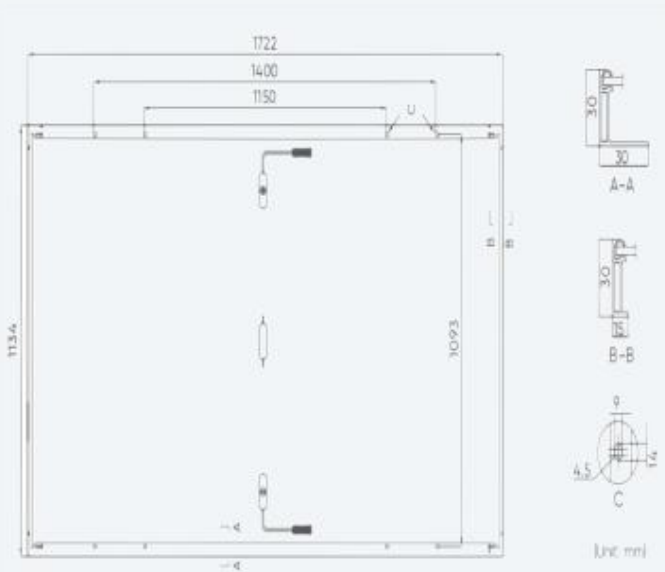


Solar power plants

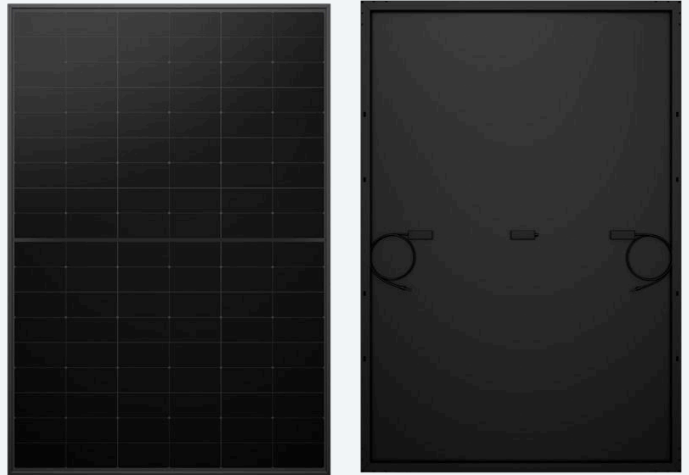


Off-grid systems

Engineering drawings



Product image



Electrical characteristics

Module Type	SNG430M-108	SNG435M-108	SNG440M-108	SNG445M-108	SNG450M-108
TESTING CONDITION ⁽¹⁾	STC ⁽²⁾ /NMOT ⁽³⁾	STC ⁽²⁾ /NMOT ⁽³⁾	STC ⁽²⁾ /NMOT ⁽³⁾	STC ⁽²⁾ /NMOT ⁽³⁾	STC ⁽²⁾ /NMOT ⁽³⁾
Maximum Power (Pmax)	430Wp/325Wp	435Wp/329Wp	440Wp/333Wp	445Wp/337Wp	450Wp/341Wp
Maximum Power Voltage (Vmp)	32.86V/30.84V	33.05V/31.02V	33.24V/31.20V	33.43V/31.38V	33.62V/31.55V
Maximum Power Current (Imp)	13.09A/10.56A	13.17A/10.62A	13.24A/10.68A	13.32A/10.74A	13.39A/10.80A
Open-circuit Voltage (Voc)	39.77V/37.99V	40.00V/38.21V	40.23V/38.42V	40.46V/38.64V	40.69V/38.86V
Short-circuit Current (Isc)	13.83A/11.16A	13.91A/11.23A	13.99A/11.29A	14.06A/11.35A	14.14A/11.41A
Module Efficiency (%)	22%	22.3%	22.5%	22.8%	23%
Operating Temperature (°C)	-40°C ± ~ +85°C				
Maximum system voltage	1500V				
Maximum series fuse rating	25A				
Power tolerance	±5%				
Temperature coefficients of Pmax	-0.29%/°C				
Temperature coefficients of Voc	-0.25%/°C				
Temperature coefficients of Isc	0.045%/°C				
Nominal operating cell temperature (NOCT)	45±2°C				

Mechanical data

Cell type	BC Technology (182x91mm)
No. of cells	108 (6x18)
Dimensions	1722x1134x30mm
Weight	20.8 kg
Front Glass	BC Technology
Frame	Anodized Aluminium Alloy Total Black
Junction Box	IP68 Rated
Output Cables	TUV: 1x4.0mm ² UL 12AWG Length: 1100mm or customized length
Connectors	Copper, Silver Plated, MC 4

Packaging configuration

Dimensions	30mm
No. of pieces per pallet	36
Total number of pallets	26
Module quantity per 40' container (pcs)	936

(1) Measurement Tolerances: Pmax (+/- 5%), Isc & Voc (+/- 5%) - Power Classification 0/+5%

(2) STC (Standard Testing Condition): Irradiance 1000W/m², Cell Temperature 25°C, AM 1.5

(3) NMOT (Nominal Operating Module Temperature): Irradiance 800W/m², NMOT. Ambient Temperature 20°C, AM 1.5, Wind Speed 1m/s

STC/NMOT



Irradiance 1000W/m² / 800W/m²



Module Temperature 25°C



AM = 1.5