

## Efficient Power Generation Roof 25-year Warranty Worry-free



### SAFE AND RELIABLE

- Resistant to 17-level typhoon
- Waterproof rating: Class I
- Fire protection rating: Class A



### EFFICIENT AND LEADING

- High conversion efficiency
- High weak light performance
- Low power degradation



### AESTHETIC APPEARANCE

- Minimalist aesthetics
- Integrating architectural appearance
- Customized color



### STEADY RETURNS

- 25-year stable returns
- High economic returns
- Good carbon reduction



### REASSURING AND CAREFREE

- Easy installation and maintenance
- Full-lifecycle services with 25-year warranty
- Monitoring and O&M system

Distributed industrial and commercial buildings suitable for new construction or renovation.



### System Basic Information >

System Roof Construction	Photovoltaic module/ Metal roof/Flexible waterproof layer/Insulating layer Roof floor/Roof purlin	Version Information	Finite element non-slip wind-resistant leak-proof roof system
Module Fixation	Flexible connection	Material	Alumini-Zinc-Magnesium steel plate (Thickness: 0.6~0.8mm)
		Module Dimension	2272×1128×5mm
		Module Weight	29.5kg

### Operating Parameter >

Operational Temperature	-40°C~+85°C
Voc and Isc Tolerance	±3%
Power Output Tolerance	0~3%
Maximum System Voltage	DC1500V(IEC)
Maximum Series Fuse Rating	30A
Nominal Operating Cell Temperature	45±2°C
Protection Class	Class II
System Fire Rating	Class A

### Temperature Ratings (STC) >

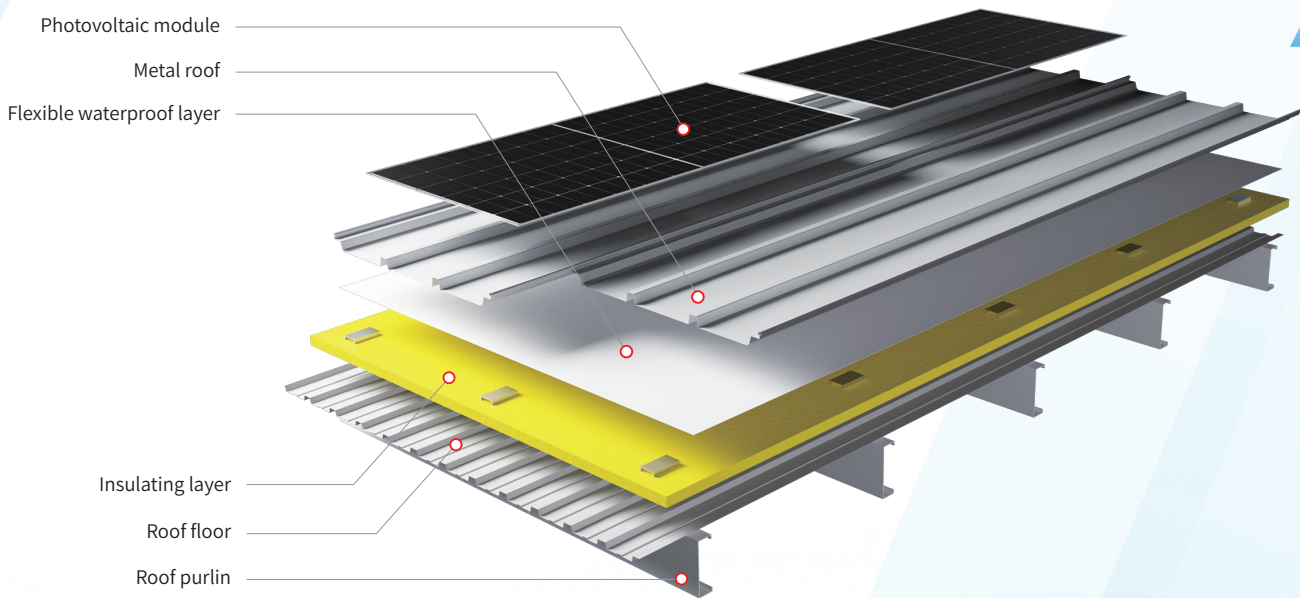
Temperature Coefficient of Isc	+0.050%/°C
Temperature Coefficient of Voc	- 0.230%/°C
Temperature Coefficient of Pmax	- 0.290%/°C

### Power Degradation >

First year power degradation	1.5%
Year 2-25 Power Degradation	0.4%

### Mechanical Loading >

Front Side Maximum Static Loading	5400Pa
Rear Side Maximum Static Loading	2400Pa
Hailstone Test	45mm Hailstone at the speed of 30.7m/s



### Electrical Characteristics >

Module Type	Electrical Characteristics (STC) LGi5-72HTD					Electrical Characteristics (NOCT) LGi5-72HTD				
	570M	575M	580M	585M	590M	570M	575M	580M	585M	590M
Maximum Power (Pmax/W)	570	575	580	585	590	428	437	441	445	449
Open Circuit Voltage (Voc/V)	52.40	52.45	52.50	52.55	52.60	49.40	49.50	49.60	49.70	49.70
Short Circuit Current (Isc/A)	13.83	13.94	14.06	14.17	14.28	11.17	11.26	11.35	11.44	11.53
Voltage at Maximum Power (Vmp/V)	43.67	43.71	43.75	43.80	43.83	40.80	40.80	40.80	40.90	40.90
Current at Maximum Power (Imp/A)	13.06	13.16	13.26	13.38	13.47	10.49	10.72	10.80	10.89	10.97
Module Efficiency(%)	22.2	22.4	22.6	22.8	23.0	22.2	22.4	22.6	22.8	23.0

STC: 1000W/m<sup>2</sup>, 25°C, AM1.5      NOCT : 800W/m<sup>2</sup>, 20°C, AM1.5, 1m/s