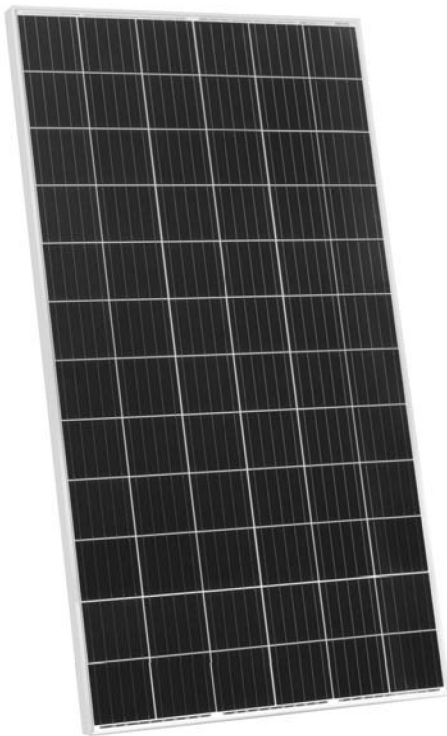
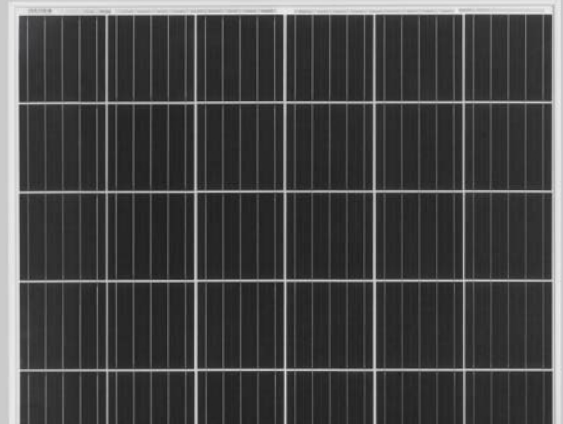


# SWXXM3 380-400 Watt

MONO FACIAL MODULE

Positive power tolerance of 3+~0%

IEC 61730



## Key Features



### 5 Busbar Solar Cell

5 busbar solar cell adopts new technology to improve the efficiency of modules, offers a better aesthetic appearance, making it perfect for rooftop installation.



### High Efficiency

Higher module conversion efficiency (up to 20.17%) benefit from Passivated Emmitter Rear Contact (PERC) technology.



### PID Resistance

Eagle modules pass PID test, limited power degradation by PID test is guaranteed for mass production.



### Low-light Performance

Advanced glass and surface texturing allow for excellent performance in low-light environments.



### Severe Weather Resilience

Certified to withstand: wind load (2400 Pascal) and snow load (5400 Pascal).

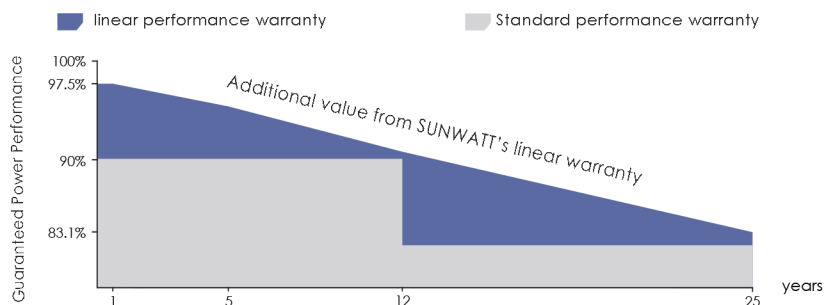


### Durability Against Extreme Environmental Condition

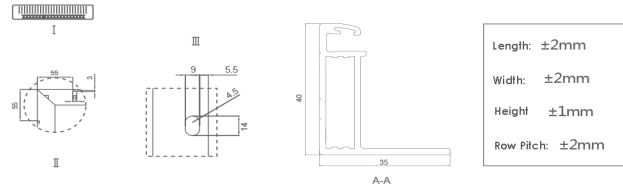
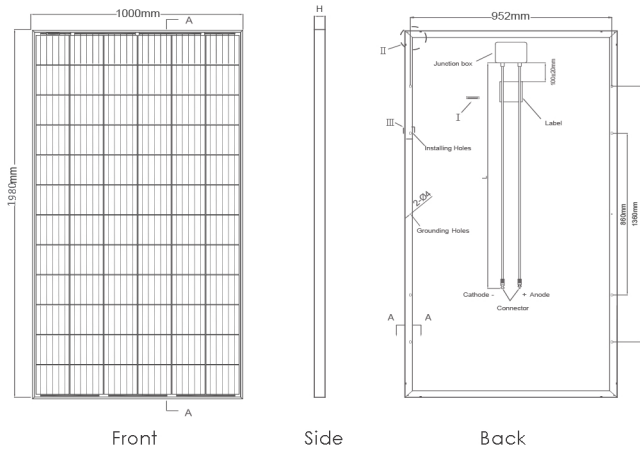
High salt mist and ammonia resistance.

## LINEAR PERFORMANCE WARRANTY

12 Year Product Warranty • 25 Year Linear Power Warranty



## Engineering Drawings



Length:  $\pm 2\text{mm}$   
Width:  $\pm 2\text{mm}$   
Height:  $\pm 1\text{mm}$   
Row Pitch:  $\pm 2\text{mm}$

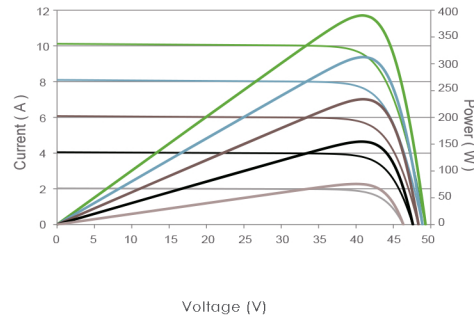
## Packaging Configuration

( Two pallets = One

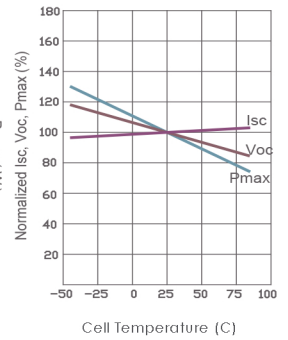
30 pcs/pallets, 60 pcs/stack, 660 pcs/40'HQ Container

## Electrical Performance & Temperature

### Current-Voltage & Power-Voltage Curves (445W)



### Temperature Dependence of



## Mechanical Characteristics

Cell Type	Mono PERC 158.75×158.75mm
No. of cells	72 (6×12)
Dimensions	1980x1000x35mm
Weight	22.5 kg (49.6 lbs)
Front Glass	3.2mm, Anti-Reflection Coating High Transmission, Low Iron, Tempered Glass
Frame	Anodized Aluminium Alloy
Junction Box	IP68 Rated
Output Cables	4.0mm <sup>2</sup> , Length 900/1200mm or Customized Length

## SPECIFICATIONS

Module Type	SW380M3		SW385M3		SW390M3		SW395M3		SW400M3	
	STC	NOCT	STC	NOCT	STC	NOCT	STC	NOCT	STC	NOCT
Maximum Power (Pmax)	380Wp	286Wp	385Wp	290Wp	390Wp	294Wp	395Wp	298Wp	400Wp	302Wp
Maximum Power Voltage (Vmp)	40.5V	38.6V	40.8V	38.8V	41.1V	39.1V	41.4V	39.3V	41.7V	39.6V
Maximum Power Current (Imp)	9.39A	7.42A	9.44A	7.48A	9.49A	7.54A	9.55A	7.60A	9.60A	7.66A
Open-circuit Voltage (Voc)	48.9V	47.5V	49.1V	47.7V	49.3V	48.0V	49.5V	48.2V	49.8V	48.5V
Short-circuit Current (Isc)	9.75A	7.88A	9.92A	7.95A	10.12A	8.02A	10.23A	8.09A	10.36A	8.16A
Module Efficiency STC (%)	19.16%		19.42%		19.67%		19.92%		20.17%	
Operating Temperature(°C)	-40°C~+85°C									
Maximum System Voltage	1000/1500VDC (IEC)									
Maximum Series Fuse Rating	20A									
Power Tolerance	0~+3%									
Temperature Coefficients of Pmax	-0.37%/°C									
Temperature Coefficients of Voc	-0.29%/°C									
Temperature Coefficients of Isc	0.048%/°C									
Nominal Operating Cell Temperature (NOCT)	45±2°C									

STC: Irradiance 1000W/m<sup>2</sup>

Cell Temperature 25°C

AM=1.5

NOCT: Irradiance 800W/m<sup>2</sup>

Ambient Temperature 20°C

AM=1.5

Wind Speed 1m/s

\* power measurement tolerance:  $\pm 3\%$